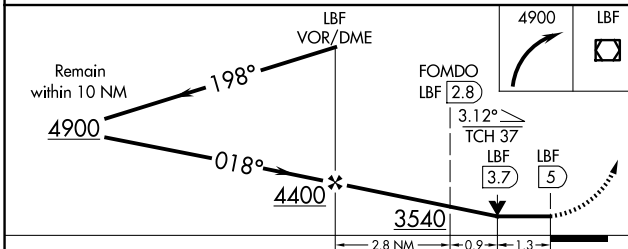
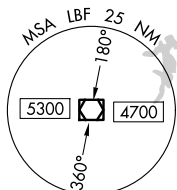
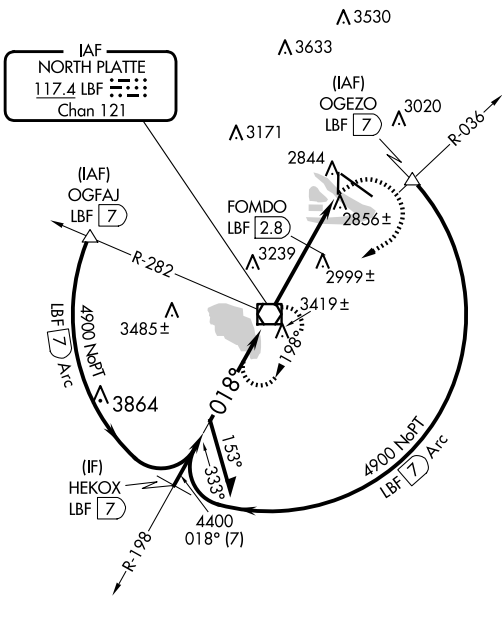


VOR/DME LBF 117.4 Chan 121	APP CRS 018°	Rwy Idg 4135 TDZE 2777 Apt Elev 2777
--	------------------------	---

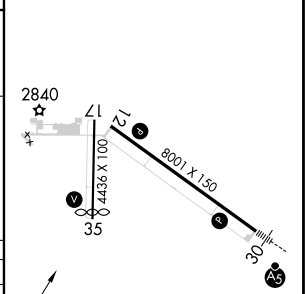
VOR RWY 35

NORTH PLATTE RGNL/LEE BIRD FLD (L.B.F)

<p>▽ Rwy 35 helicopter visibility reduction below 3/4 SM NA.</p>		<p>▲ MISSED APPROACH: Climbing right turn to 4900 direct LBF VOR/DME and hold, continue climb-in-hold to 4900.</p>	
ASOS 118.425	DENVER CENTER 132.7 226.675	CLNC DEL 132.7	UNICOM 123.0 (CTAF) 0



ELEV 2777 **D** TDZE 2777



CATEGORY	A	B	C	D
S-35	3540-1 763 (800-1)	3540-1¼ 763 (800-1¼)	3540-2¼ 763 (800-2¼)	3540-2½ 763 (800-2½)
C CIRCLING	3540-1 763 (800-1)	3540-1¼ 763 (800-1¼)	3540-2¼ 763 (800-2¼)	3560-2½ 783 (800-2½)
FOMDO FIX MINIMUMS				
S-35	3220-1 443 (500-1)	3220-1¼ 443 (500-1¼)	3220-1½ 443 (500-1½)	3220-1½ 443 (500-1½)
C CIRCLING	3280-1 503 (600-1)	3340-1 563 (600-1)	3420-1¾ 643 (700-1¾)	3560-2½ 783 (800-2½)

HIRL Rwy 12-30 0	REIL Rwy 35 0	MIRL Rwy 17-35 0			
FAF to MAP 5 NM					
Knots	60	90	120	150	180
Min:Sec	5:00	3:20	2:30	2:00	1:40

NC-2, 20 FEB 2025 to 20 MAR 2025

NC-2, 20 FEB 2025 to 20 MAR 2025