

ILS or LOC X RWY 14

LOC I-HIF 109.9	APCH CRS 139°	Rwy Idg 13,500 TDZE 4786 Arprt Elev 4789
---------------------------	-------------------------	---

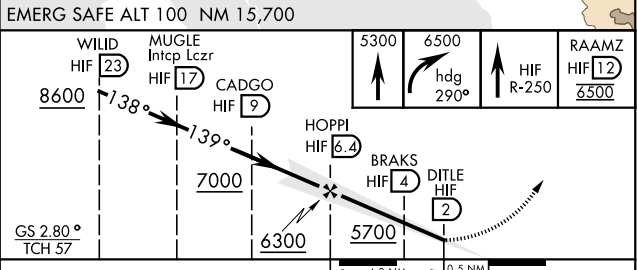
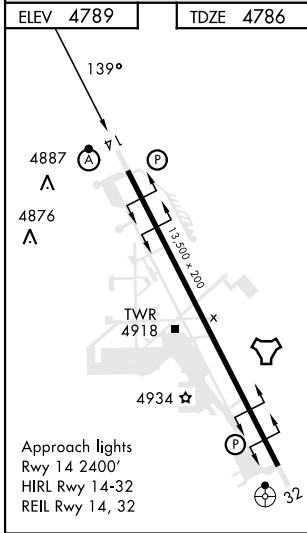
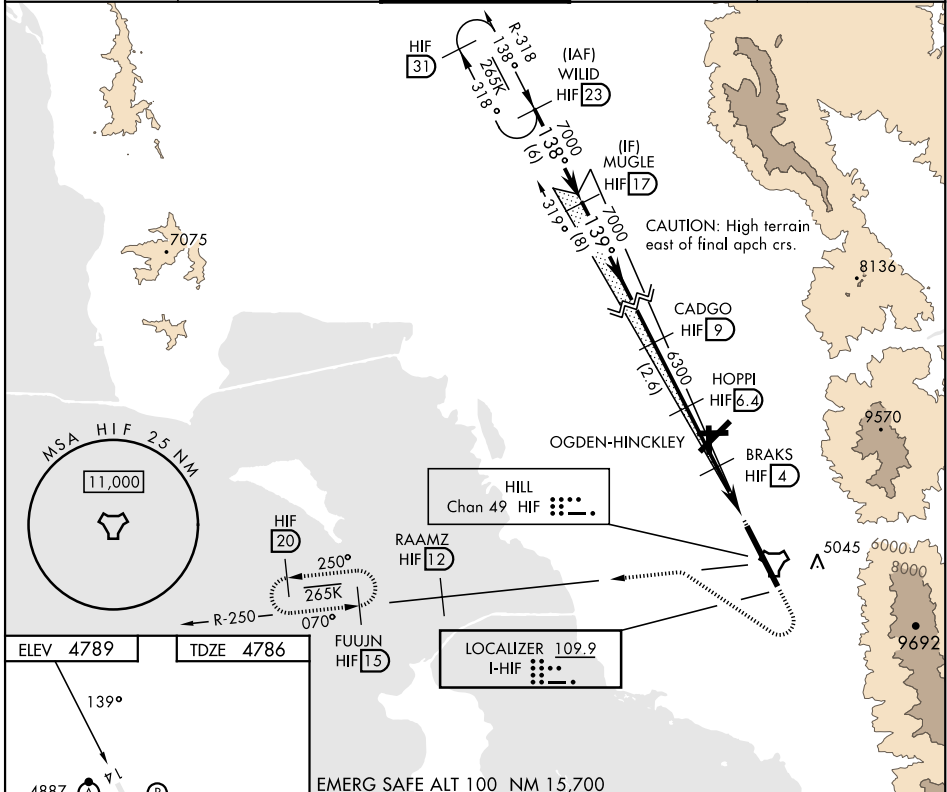
AL-296 [USAF]

HILL AFB (KHIF)

RADAR or DME required for LOC.
 ▼ * When ALS inop, increase RVR to 40 and vis to 3/4 mile.
 ** When ALS inop, increase RVR to 55 and vis to 1 mile.
 *** Circling not authorized in sector NE of Rwy 14-32.

ALSf-2
 MISSED APPROACH: Climb to 5300, then turn right heading 290°, remain within HIF TACAN 5.7 DME until established on 290° heading. Intercept the HIF R-250 outbound. Cross RAAMZ at 6500, then climb and maintain 7200 direct to FUJUN and hold.

ATIS 134.925 397.9	SALT LAKE CITY APP CON 121.1 319.25	TOWER 127.15 263.15	GND CON 121.6 275.8	CLNC DEL 124.1 335.8
------------------------------	---	-------------------------------	-------------------------------	--------------------------------



CATEGORY	A	B	C	D	E
S-ILS 14 *		4986/24	200	(200-1/2)	
S-LOC 14 **		5080/24	294	(300-1/2)	
CIRCLING ***	5280-1 491 (500-1)	5280-1 1/2 491 (500-1 1/2)	5340-2 551 (600-2)	5900-3 1111 (1200-3)	

ILS or LOC X RWY 14

SW-4, 20 FEB 2025 to 20 MAR 2025

SW-4, 20 FEB 2025 to 20 MAR 2025