

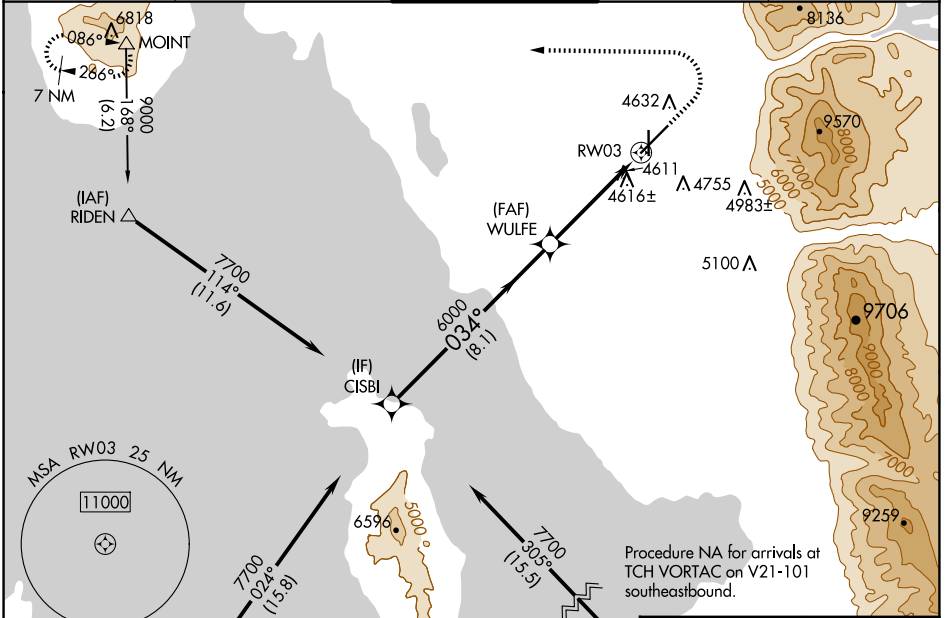
WAAS CH <b>65620</b> <b>W03A</b>	APP CRS <b>034°</b>	Rwy Idg <b>7252</b> TDZE <b>4473</b> Apt Elev <b>4473</b>
--	------------------------	---

# RNAV (GPS) RWY 3

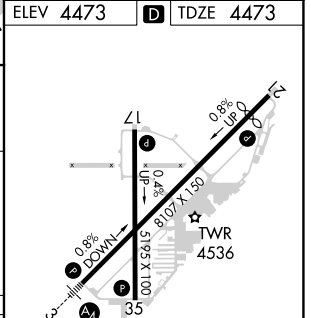
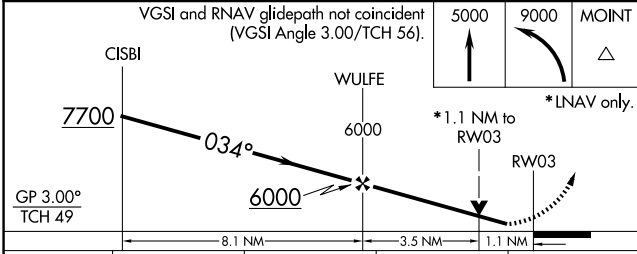
OGDEN-HINCKLEY (OGD)

RNP APCH.	MALS	MISSED APPROACH: Climb to 5000 then climbing left turn to 9000 direct MOINT and hold, continue climb-in-hold to 9000.
<p><b>⚠</b> Baro-VNAV and VDP NA when using Hill AFB altimeter setting. For uncompensated Baro-VNAV systems, LNAV/VNAV NA below -17°C or above 50°C. When local altimeter setting not received, use Hill AFB altimeter setting. Circling NA for Cats C and D east of Rwy 21 and 35. For Inop ALS, increase LPV all Cats visibility to ½ SM, increase LNAV/VNAV all Cats and LNAV Cat C/D visibility to 1 ½ SM.</p>		

ATIS <b>125.55</b>	SALT LAKE CITY APP CON <b>121.1</b>	OGDEN TOWER* <b>118.7 (CTAF) 0 253.5</b>	GND CON <b>121.7</b>	UNICOM <b>122.95</b>
-----------------------	--	---	-------------------------	-------------------------



ELEV 4473	TDZE 4473
-----------	-----------



CATEGORY	A	B	C	D
LPV DA	4741-¾ 268 (300-¾)			
LNAV/VNAV DA	4889-1 416 (500-1)			
LNAV MDA	4880-¾ 407 (500-¾)		4880-1 407 (500-1)	
<b>C</b> CIRCLING	4980-1 507 (600-1)	5100-1 627 (700-1)	5100-1¾ 627 (700-1¾)	5180-2¼ 707 (800-2¼)

HIRL Rwy 3-21

MIRL Rwy 17-35

REIL Rwy 17 and 35