

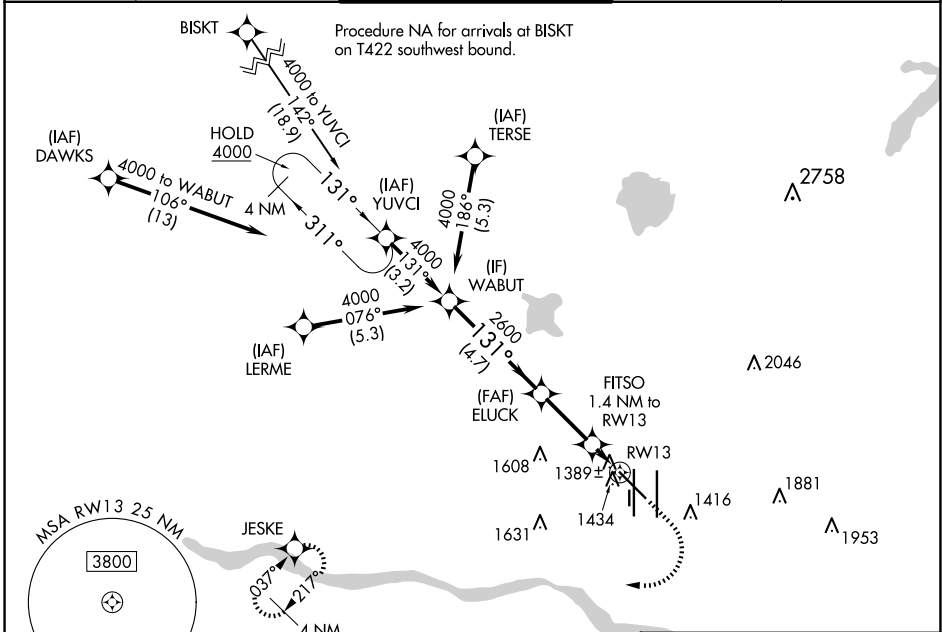
WAAS CH 45625 W13A	APP CRS 131°	Rwy Idg TDZE Apt Elev	7800 1279 1296
----------------------------------------	------------------------	-----------------------------	-------------------------------------------

RNAV (GPS) RWY 13

OKC WILL ROGERS INTL (OKC)

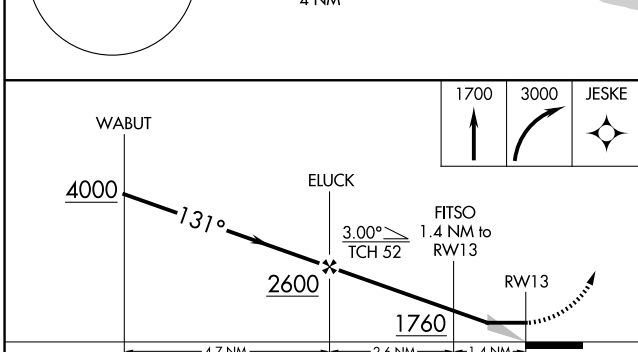
RNP APCH-GPS.		MISSED APPROACH: Climb to 1700 then climbing right turn to 3000 direct JESKE and hold.		
▼	▲			
ASR				

D-ATIS 125.85	OKE CITY APP CON 124.6 266.8	ROGERS TOWER 119.35 269.45	GND CON 121.9 348.6	CLNC DEL 124.35
-------------------------	----------------------------------------	--------------------------------------	-------------------------------	---------------------------



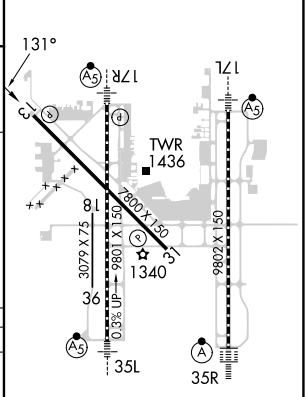
SC-1, 20 FEB 2025 to 20 MAR 2025

SC-1, 20 FEB 2025 to 20 MAR 2025



ELEV 1296	D	TDZE 1279
-----------	----------	-----------

CATEGORY	A	B	C	D
LP MDA	1640-1		361 (400-1)	
RNAV MDA	1700-1	421 (500-1)	1700-1¼	421 (500-1¼)
CIRCLING	1740-1 444 (500-1)	1760-1 464 (500-1)	1960-1¾ 664 (700-1¾)	2000-2¼ 704 (800-2¼)



REIL Rwy 13 and 31
TDZ/CL Rwy 35R
MIRL Rwy 13-31
HIRL Rwy 17L-35R and 17R-35L