

RNAV (RNP) Z RWY 17L

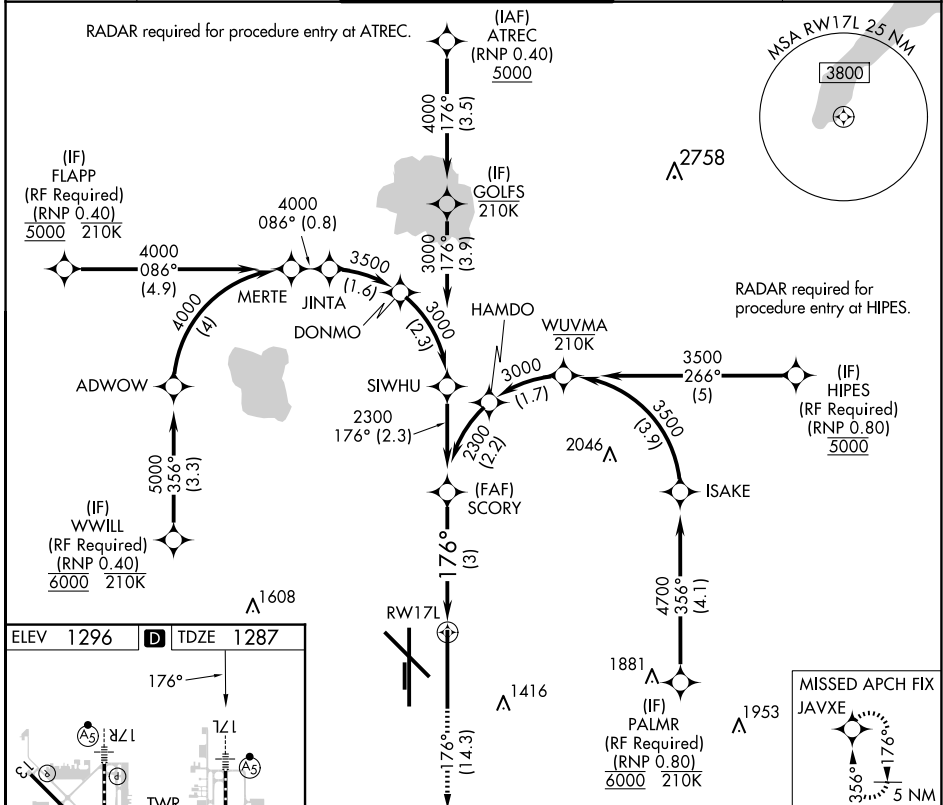
OKC WILL ROGERS INTL (OKC)

APP CRS	Rwy Idg	9802
176°	TDZE	1287
	Apt Elev	1296

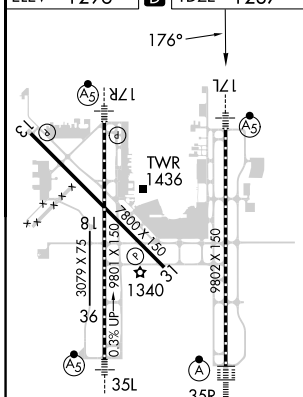
ASR For uncompensated Baro-VNAV systems, procedure NA below -12°C (11°F) or above 54°C (130°F). GPS required. Simultaneous approach authorized with Rwy 17R. Use of FD or AP providing RNAV track guidance required during simultaneous operations.

MALSR MISSED APPROACH: Climb to 5000 on track 176° to JAVXE and hold, continue climb-in-hold to 5000.

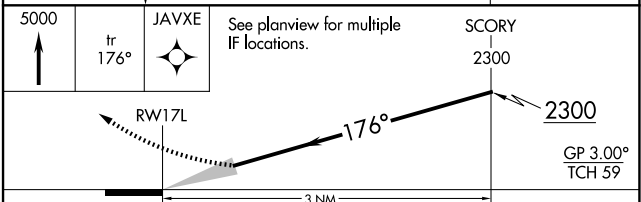
D-ATIS	OKC CITY APP CON	ROGERS TOWER	GND CON	CLNC DEL
125.85	124.6 266.8	119.35 269.45	121.9 348.6	124.35



ELEV 1296	D TDZE 1287
-----------	--------------------



REIL Rwy 13 and 31
 TDZ/CL Rwy 35R
 MIRL Rwy 13-31
 HIRL Rwy 17L-35R and 17R-35L



CATEGORY	A	B	C	D
RNP 0.11 DA		1555/24	268 (300-½)	
RNP 0.20 DA		1643/34	356 (400-¾)	
RNP 0.30 DA		1724/49	437 (500-1)	

AUTHORIZATION REQUIRED

SC-1, 20 FEB 2025 to 20 MAR 2025

SC-1, 20 FEB 2025 to 20 MAR 2025