

# RNAV (RNP) Z RWY 17R

OKC WILL ROGERS INTL (OKC)

APP CRS	Rwy Idg	<b>9800</b>
<b>176°</b>	TDZE	<b>1282</b>
	Apt Elev	<b>1296</b>

RNP AR APCH.

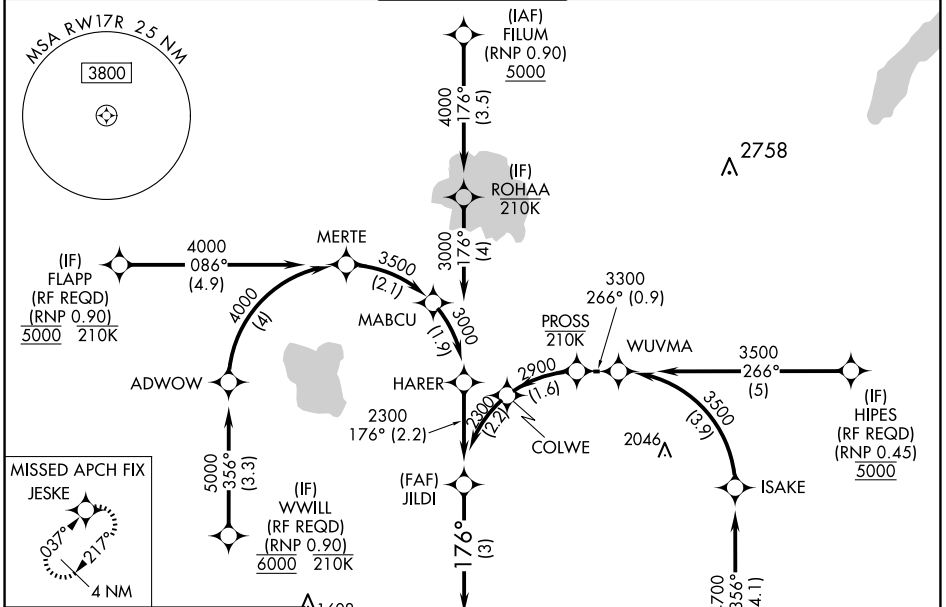
**ASR** For uncompensated Baro-VNAV systems, procedure NA below -13°C or above 54°C.  
 For inop ALS, increase RNP 0.20 all Cats visibility to RVR 4500 and RNP 0.30 all Cats visibility to RVR 6000. Simultaneous approach authorized. Use of FD or AP required during simultaneous operations.

MALSR



**MISSED APPROACH:** Climb to 2000 then climbing right turn to 3000 direct JESKE and hold.

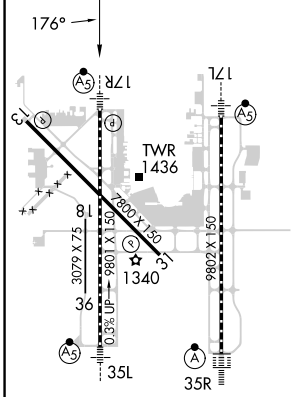
D-ATIS <b>125.85</b>	OKE CITY APP CON <b>124.6 266.8</b>	<b>ROGERS TOWER</b> <b>119.35 269.45</b>	GND CON <b>121.9 348.6</b>	CLNC DEL <b>124.35</b>
-------------------------	--	---	-------------------------------	---------------------------



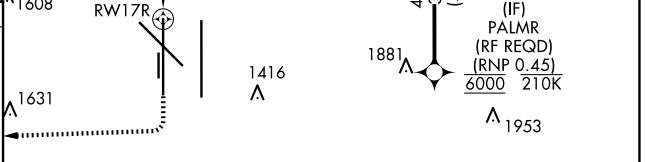
SC-1, 20 FEB 2025 to 20 MAR 2025

SC-1, 20 FEB 2025 to 20 MAR 2025

ELEV 1296	<b>D</b>	TDZE 1282
-----------	----------	-----------

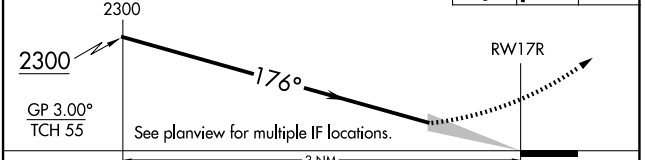


REIL Rwy 13 and 31  
 TDZ/CL Rwy 35R  
 MIRL Rwy 13-31  
 HIRL Rwy 17L-35R and 17R-35L



VGSI and RNAV glidepath not coincident (VGSI Angle 3.00/TCH 60).

2000 3000 JESKE



CATEGORY	A	B	C	D
RNP 0.20 DA		1559/24	277 (300-½)	
RNP 0.30 DA		1677/35	395 (400-⅝)	

## AUTHORIZATION REQUIRED