

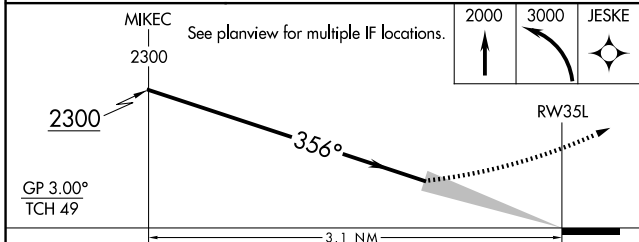
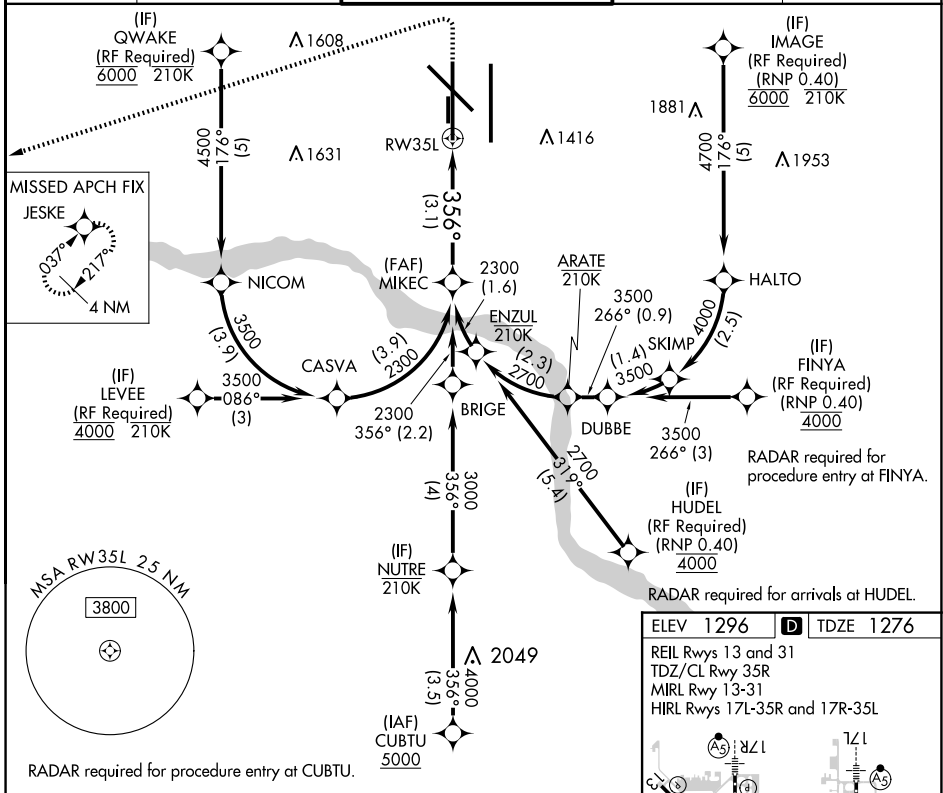
APP CRS 356°	Rwy Idg 9800
	TDZE 1276
	Apt Elev 1296

RNAV (RNP) Z RWY 35L

OKC WILL ROGERS INTL (OKC)

ASR For uncompensated Baro-VNAV systems, procedure NA below -12°C (11°F) or above 54°C (130°F). GPS required. Simultaneous approach authorized with Rwy 35R. Use of FD or AP providing RNAV track guidance required during simultaneous operations. For inop ALS, increase RNP 0.30 all Cats visibility to 1/4 SM.	MALSR 	MISSED APPROACH: Climb to 2000 then climbing left turn to 3000 direct JESKE and hold.

D-ATIS 125.85	OKE CITY APP CON 124.6 266.8	ROGERS TOWER 119.35 269.45	GND CON 121.9 348.6	CLNC DEL 124.35
-------------------------	--	--------------------------------------	-------------------------------	---------------------------



ELEV 1296	D TDZE 1276
REIL Rwy 13 and 31 TDZ/CL Rwy 35R MIRL Rwy 13-31 HIRL Rwy 17L-35R and 17R-35L	

CATEGORY	A	B	C	D
RNP 0.30 DA		1646/38	370 (400-3/4)	

AUTHORIZATION REQUIRED

SC-1, 20 FEB 2025 to 20 MAR 2025

SC-1, 20 FEB 2025 to 20 MAR 2025