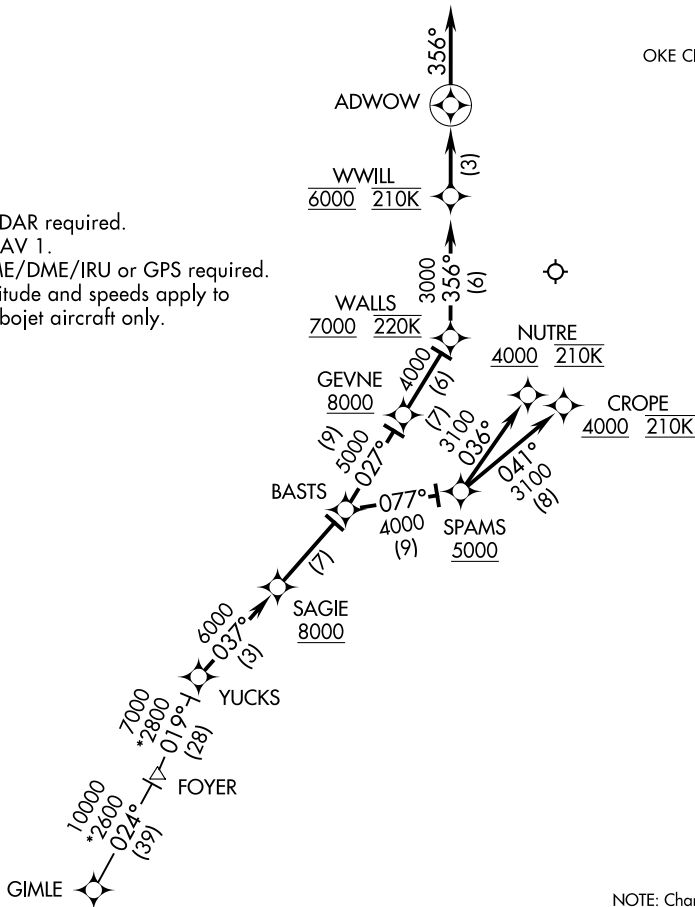


(YUCKS.YUCKS3) 24305 AL-301 (FAA)  
**YUCKS THREE ARRIVAL (RNAV)**

OKC WILL ROGERS INTL (OKC)  
 OKLAHOMA CITY, OKLAHOMA

OKC D-ATIS  
 125.85  
 OKC CITY APP CON  
 124.6 266.8

NOTE: RADAR required.  
 NOTE: RNAV 1.  
 NOTE: DME/DME/IRU or GPS required.  
 NOTE: Altitude and speeds apply to turbojet aircraft only.



NOTE: Chart not to scale.

**ARRIVAL ROUTE DESCRIPTION**

GIMLE TRANSITION (GIMLE.YUCKS3):

From YUCKS on track 037° to cross SAGIE at or above 8000, then on track 037° to BASTS.

LANDING RWY 17L/R: From BASTS on track 027° to cross GEVNE at or above 8000, then on track 027° to cross WALLS at or above 7000 and at 220K, then on track 356° to cross WWILL at 6000 and at 210K, then on track 356° to ADWOW, then on track 356°.  
 Expect radar vectors to final approach course.

LANDING RWY 35L: From BASTS on track 077° to cross SPAMS at or above 5000, then on track 036° to cross NUTRE at or above 4000 and at 210K. Expect RNAV (RNP) approach.

LANDING RWY 35R: From BASTS on track 077° to cross SPAMS at or above 5000, then on track 041° to cross CROPE at or above 4000 and at 210K. Expect RNAV (RNP) approach.

**YUCKS THREE ARRIVAL (RNAV)**  
 (YUCKS.YUCKS3) 07DEC17

OKLAHOMA CITY, OKLAHOMA  
 OKC WILL ROGERS INTL (OKC)

SC-1, 20 FEB 2025 to 20 MAR 2025

SC-1, 20 FEB 2025 to 20 MAR 2025