

(RACER8.MCI) 24137

# RACER EIGHT DEPARTURE

AL-302 (FAA)

NEW CENTURY AIRCENTER (IXD)  
OLATHE, KANSAS

KANSAS CITY DEP CON  
118.9 251.075

RADAR required.

**TOP ALTITUDE:**  
**10000**

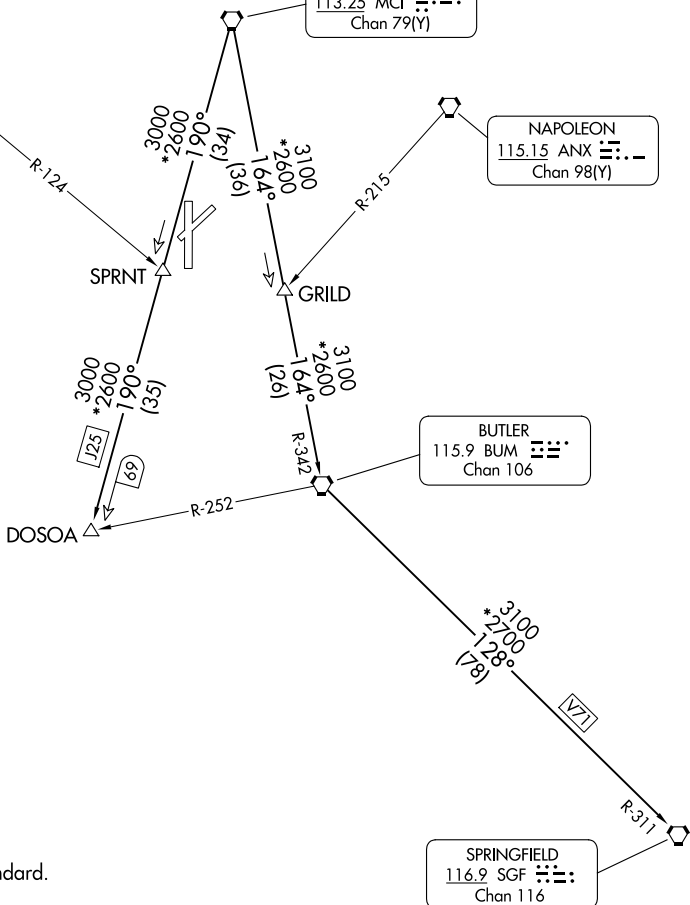
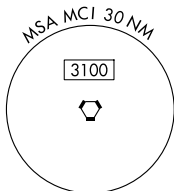
KANSAS CITY  
113.25 MCI Chan 79(Y)

TOPEKA  
117.8 TOP Chan 125

NAPOLEON  
115.15 ANX Chan 98(Y)

BUTLER  
115.9 BUM Chan 106

SPRINGFIELD  
116.9 SGF Chan 116



### TAKEOFF MINIMUMS

Rwys 4, 18, 22, 36: Standard.

NOTE: Chart not to scale.

### DEPARTURE ROUTE DESCRIPTION

**TAKEOFF ALL RUNWAYS:** Climb on assigned heading for RADAR vectors to appropriate route. Maintain 10000 or as assigned by ATC, expect filed altitude 10 minutes after departure.

**BUTLER TRANSITION (RACER8.BUM):** From over MCI VORTAC on MCI R-164 and BUM R-342 to BUM VORTAC.

**DOSOIA TRANSITION (RACER8.DOSOIA):** From over MCI VORTAC on MCI R-190 to DOSOIA.

**SPRINGFIELD TRANSITION (RACER8.SGF):** From over MCI VORTAC on MCI R-164 and BUM R-342 to BUM VORTAC, then on BUM R-128 and SGF R-311 to SGF VORTAC.

# RACER EIGHT DEPARTURE

(RACER8.MCI) 05OCT23

OLATHE, KANSAS  
NEW CENTURY AIRCENTER (IXD)

NC-2, 20 FEB 2025 to 20 MAR 2025

NC-2, 20 FEB 2025 to 20 MAR 2025