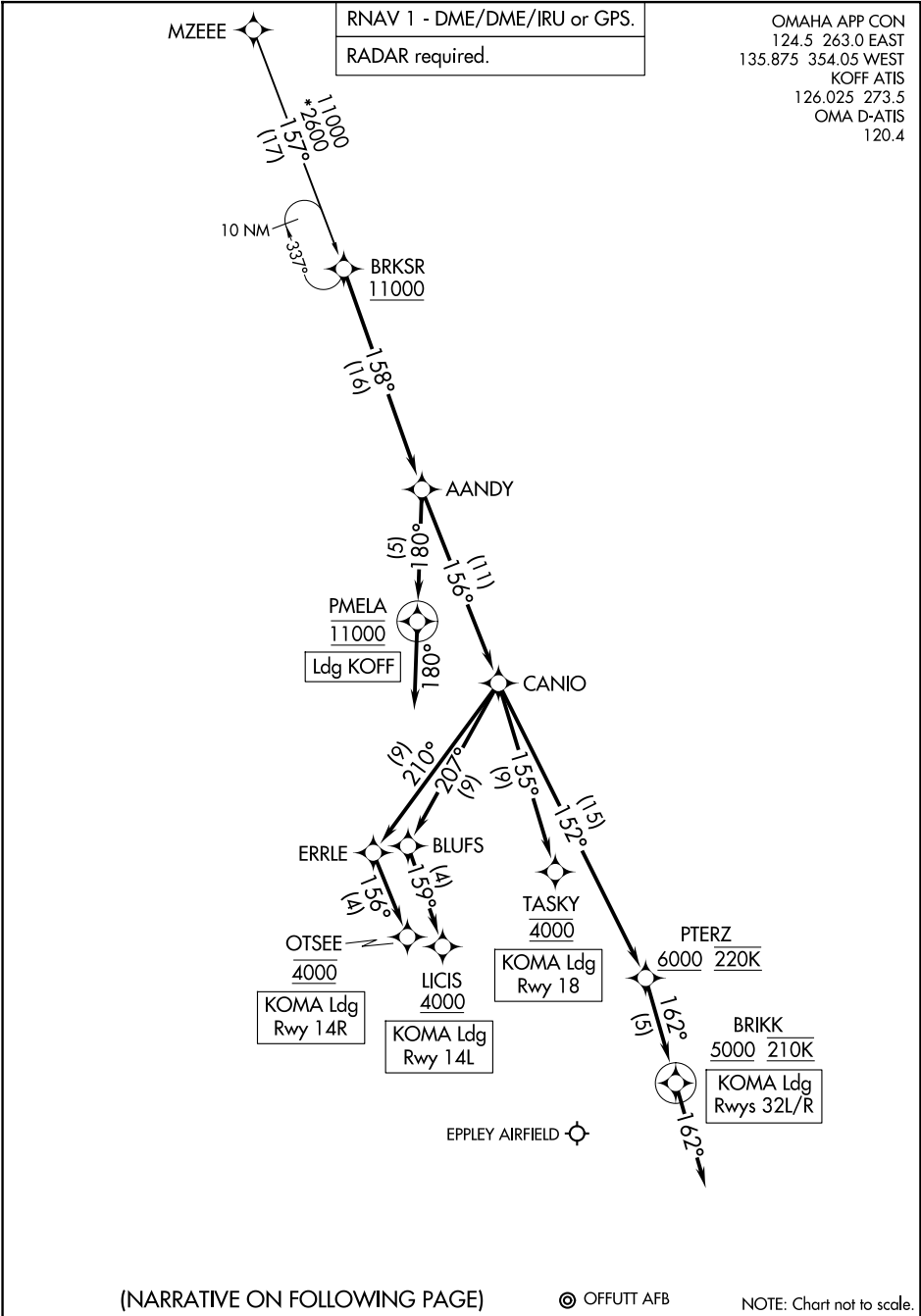


(BRKSR.AANDY2) 24361

# AANDY TWO ARRIVAL (RNAV)

AL-304 (FAA)

OMAHA, NEBRASKA



NC-2, 20 FEB 2025 to 20 MAR 2025

NC-2, 20 FEB 2025 to 20 MAR 2025

(NARRATIVE ON FOLLOWING PAGE)

© OFFUTT AFB

NOTE: Chart not to scale.

# AANDY TWO ARRIVAL (RNAV)

OMAHA, NEBRASKA

(BRKSR.AANDY2) 03NOV22

ARRIVAL ROUTE DESCRIPTION

MZEEE TRANSITION (MZEEE.AANDY2)

LANDING KOMA

From BRKSR on track 158° to AANDY, then on track 156° to CANIO.

LANDING RUNWAY 14L: From CANIO on track 207° to BLUFS, then on track 159° to cross LICIS at or above 4000. Expect RNAV (RNP) Z RWY 14L or RADAR vectors for the ILS RWY 14L approach.

LANDING RUNWAY 14R: From CANIO on track 210° to ERRLE, then on track 156° to cross OTSEE at 4000. Expect RNAV (RNP) Z RWY 14R or ILS RWY 14R approach.

LANDING RUNWAY 18: From CANIO on track 155° to cross TASKY at 4000. Expect RNAV (RNP) RWY 18 or ILS RWY 18 approach.

LANDING RUNWAYS 32L/R: From CANIO on track 152° to cross PTERZ at or above 6000 and at 220K, then on track 162° to cross BRIKK at or above 5000 and at 210K, then on track 162°. Expect RADAR vectors to final approach course.

LANDING KOFF

From BRKSR on track 158° to AANDY, then on track 180° to cross PMELA at 11000, then on track 180°. Expect RADAR vectors to final approach course.

NC-2, 20 FEB 2025 to 20 MAR 2025

NC-2, 20 FEB 2025 to 20 MAR 2025