

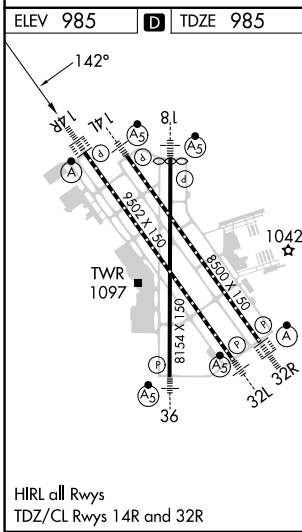
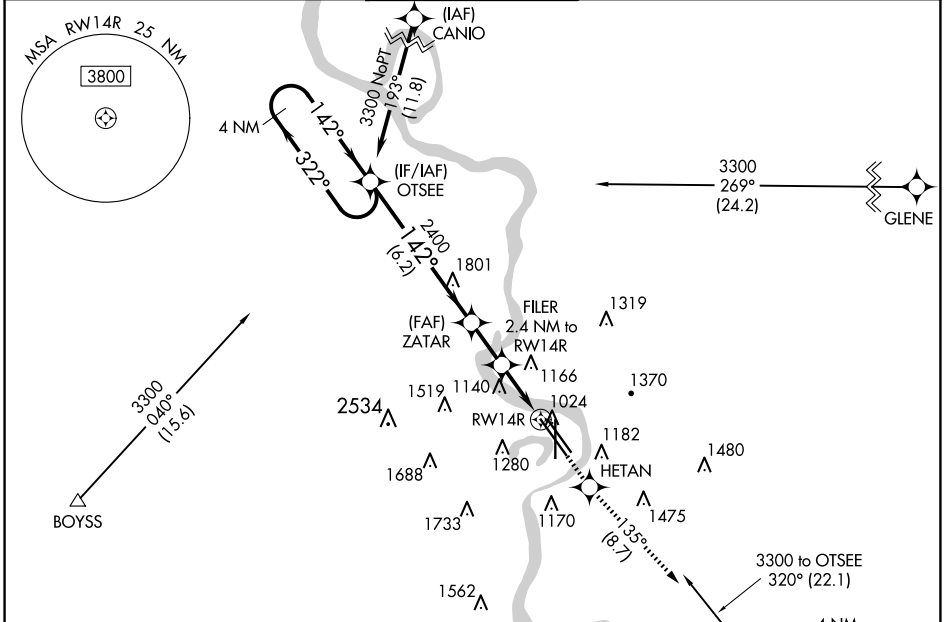
# RNAV (GPS) Y RWY 14R

EPPLEY AIRFIELD (OMA)

WAAS CH <b>56217</b> W <b>14A</b>	APP CRS <b>142°</b>	Rwy Idg TDZE Apt Elev	<b>9502</b> <b>985</b> <b>985</b>
---	------------------------	-----------------------------	---

RNP APCH. ▼ For uncompensated Baro-VNAV systems, LNAV/VNAV NA below -19°C (-2°F) or above 54°C (130°F). ▲ For inop ALS, increase LNAV/VNAV all Cats visibility to 1 3/8 SM.	ALSIF-2 A	MISSED APPROACH: Climb to 3000 direct HETAN and on track 135° to OVR VORTAC and hold.
---	--------------	---

D-ATIS <b>120.4</b>	OMAHA APP CON <b>135.875 354.05</b>	OMAHA TOWER <b>132.1 256.9</b>	GND CON <b>121.9</b>	CLNC DEL <b>119.9</b>
------------------------	--	-----------------------------------	-------------------------	--------------------------



OTSEE 4 NM Holding Pattern	ZATAR 2400	FILER 2.4 NM to RW14R	HETAN 3000	OVR tr 135°
3300 ← 322° → 142° → 2400	2400	*1800	*1.1 NM to RW14R	*LNAV only
GP 3.00° TCH 57	← 6.2 NM →	← 1.9 NM →	← 1.3 NM →	← 1.1 NM →
CATEGORY	A	B	C	D
LPV DA	1185/18 200 (200-1/2)			
LNAV/VNAV DA	1465/50 480 (500-1)			
LNAV MDA	1380/24	395 (400-1/2)	1380/35	395 (400-3/8)
CIRCLING	1660-1 675 (700-1)	1680-1 695 (700-1)	2000-3 1015 (1100-3)	2040-3 1055 (1100-3)

NC-2, 20 FEB 2025 to 20 MAR 2025

NC-2, 20 FEB 2025 to 20 MAR 2025