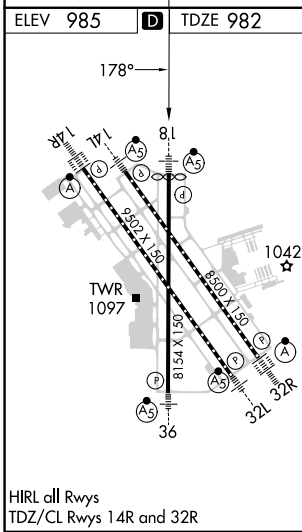
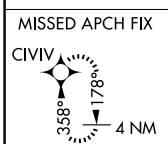
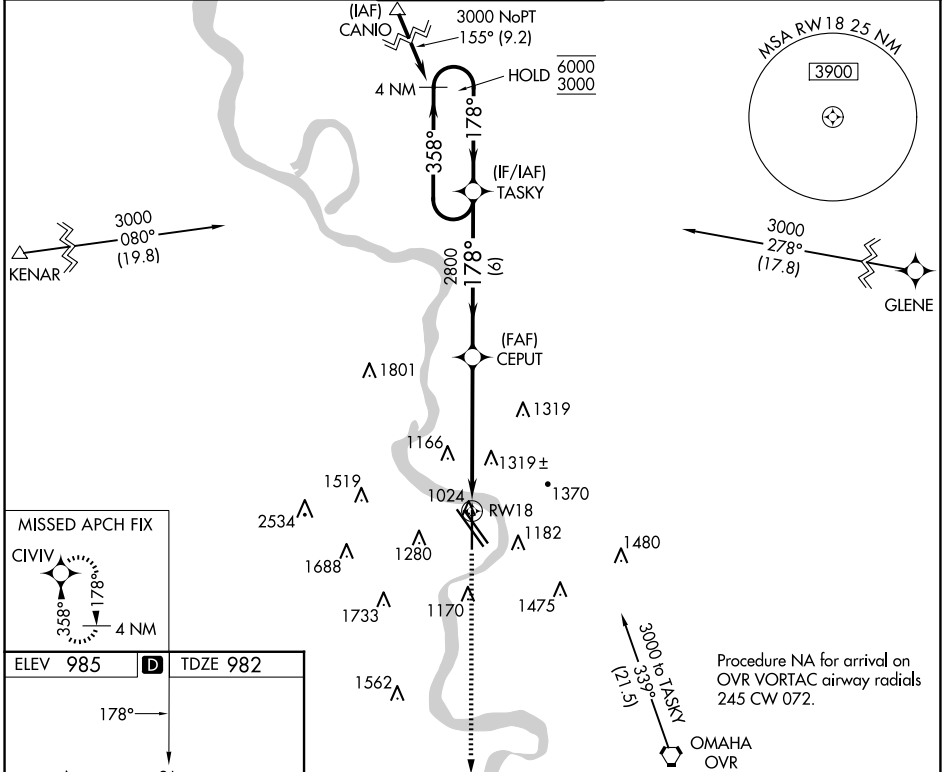


WAAS CH <b>65617</b> <b>W18A</b>	APP CRS <b>178°</b>	Rwy Idg <b>8013</b> TDZE <b>982</b> Apt Elev <b>985</b>
--	------------------------	---

# RNAV (GPS) Y RWY 18

EPPLEY AIRFIELD (OMA)

RNP APCH. ▼ For uncompensated Baro-VNAV systems, procedure NA below -19°C or above 54°C. ▲ # RVR 1800 authorized with use of FD or AP or HUD to DA.		MALSR AS	MISSED APPROACH: Climb to 3000 direct CIVIV and hold.	
D-ATIS <b>120.4</b>	OMAHA APP CON <b>135.875 354.05</b>	OMAHA TOWER <b>132.1 256.9</b>	GND CON <b>121.9</b>	CLNC DEL <b>119.9</b>



4 NM Holding Pattern	TASKY	CEPUT	3000 CIVIV	
6000 ← 358°	178° →	2800	↑ 3000	
3000	178°	2800	◆ CIVIV	
GP 3.00°	178°	2800	* 1.5 NM to RWY 18	
TCH 52	178°	2800	* LNAV only	
	6 NM	4.1 NM	1.5 NM	
CATEGORY	A	B	C	D
LPV DA#		1182/24	200 (200-½)	
LNAV/VNAV DA		1540/60	558 (600-1¼)	
LNAV MDA	1520/24	538 (600-½)	1520/55	538 (600-1)
☑ CIRCLING	1660-1 675 (700-1)	1680-1 695 (700-1)	2000-3 1015 (1100-3)	2040-3 1055 (1100-3)

NC-2, 20 FEB 2025 to 20 MAR 2025

NC-2, 20 FEB 2025 to 20 MAR 2025