

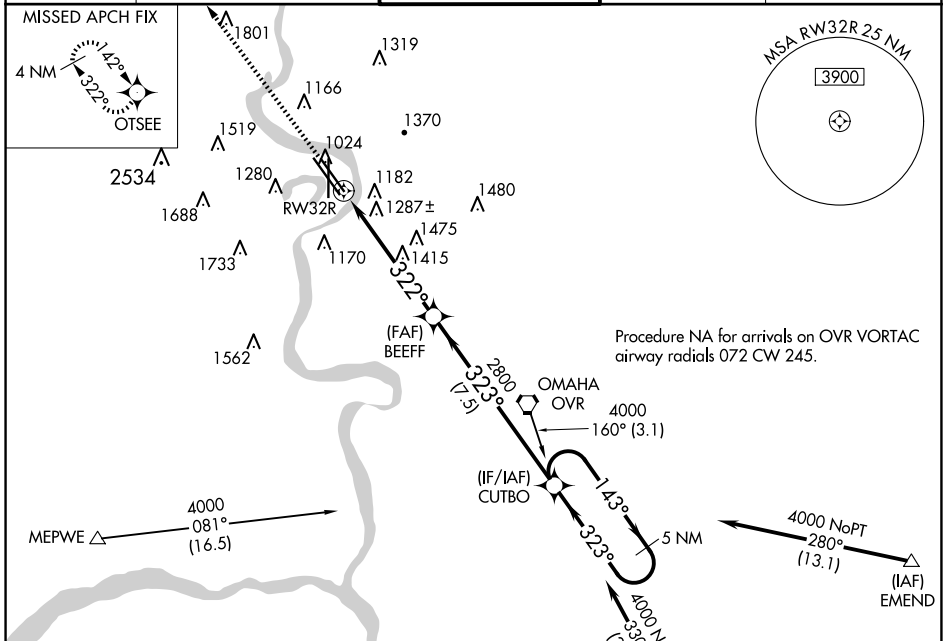
WAAS CH <b>90599</b> <b>W32B</b>	APP CRS <b>322°</b>	Rwy Idg TDZE Apt Elev	<b>8500</b> <b>981</b> <b>985</b>
--	------------------------	-----------------------------	---

# RNAV (GPS) Y RWY 32R

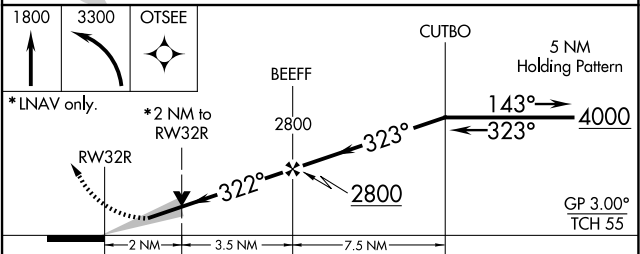
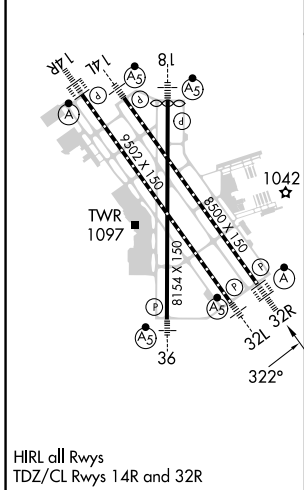
EPPLEY AIRFIELD (OMA)

<b>⚠</b> For uncompensated Baro-VNAV systems, LNAV/VNAV NA below -19°C (-2°F) or above 37°C (99°F). DME/DME RNP-0.3 NA. For inop ALS, increase LNAV/VNAV all Cats visibility to 1¼ SM.	ALSF-2 	MISSED APPROACH: Climb to 1800 then climbing left turn to 3300 direct OTSEE and hold.
--	------------	---

D-ATIS <b>120.4</b>	OMAHA APP CON <b>135.875 354.05</b>	OMAHA TOWER <b>132.1 256.9</b>	GND CON <b>121.9</b>	CLNC DEL <b>119.9</b>
------------------------	--	-----------------------------------	-------------------------	--------------------------



ELEV 985	<b>D</b>	TDZE 981
----------	----------	----------



CATEGORY	A	B	C	D
LPV DA		1181/18	200 (200-½)	
LNAV/VNAV DA		1611-1¾	630 (700-1¾)	
LNAV MDA	1680/24	699 (700-½)	1680-1½	699 (700-1½)
<b>C</b> CIRCLING	1680-1	695 (700-1)	2000-3 1015 (1100-3)	2040-3 1055 (1100-3)

NC-2, 20 FEB 2025 to 20 MAR 2025

NC-2, 20 FEB 2025 to 20 MAR 2025