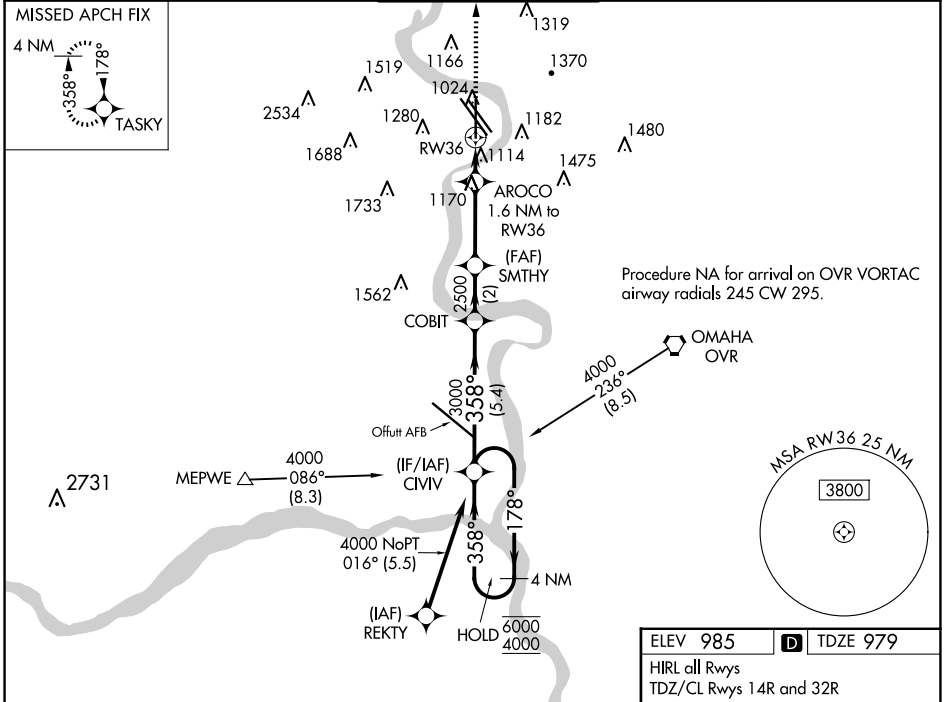


| | | |
|--|------------------------|---|
| WAAS CH 70317 W36A | APP CRS 358° | Rwy Idg 8153 TDZE 979 Apt Elev 985 |
|--|------------------------|---|

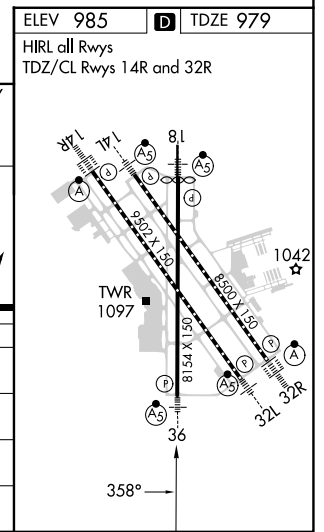
RNAV (GPS) Y RWY 36

EPPLEY AIRFIELD (OMA)

| | | | | |
|--|--|-----------------------------------|---|--------------------------|
| RNP APCH - GPS. | | MALSR | MISSED APPROACH: Climb to 3000 direct TASKY and hold. | |
| ▼ For uncompensated Baro-VNAV systems, LNAV/VNAV NA below -19°C or above 54°C. For inop ALS, increase LNAV Cat C and D visibilities to 1½ SM. ▲ | | | | |
| D-ATIS 120.4 | OMAHA APP CON 135.875 354.05 | OMAHA TOWER 132.1 256.9 | GND CON 121.9 | CLNC DEL 119.9 |



| | | | | | |
|--|-----------------------|-----------------------|-------------------------|-------------------------|----------------|
| 4 NM Holding Pattern 6000 ← 178° 4000 → 358° GP 3.00° TCH 58 | CIVV | COBIT | SMTHY | AROCO | 3000 TASKY |
| | 5.4 NM | 2 NM | 3 NM | 0.5 NM | 1.1 NM |
| | 2500 | 2500 | 1540 | 1.6 NM to RW36 | 1.1 NM to RW36 |
| CATEGORY | A | B | C | D | |
| LPV DA | | 1179-½ | 200 (200-½) | | |
| LNAV/VNAV DA | | 1372-5/8 | 393 (400-5/8) | | |
| LNAV MDA | 1380-½ | 401 (400-½) | 1380-3/4 | 401 (400-3/4) | |
| C CIRCLING | 1660-1 675 (700-1) | 1680-1 695 (700-1) | 2000-3 1015 (1100-3) | 2040-3 1055 (1100-3) | |



NC-2, 20 FEB 2025 to 20 MAR 2025

NC-2, 20 FEB 2025 to 20 MAR 2025