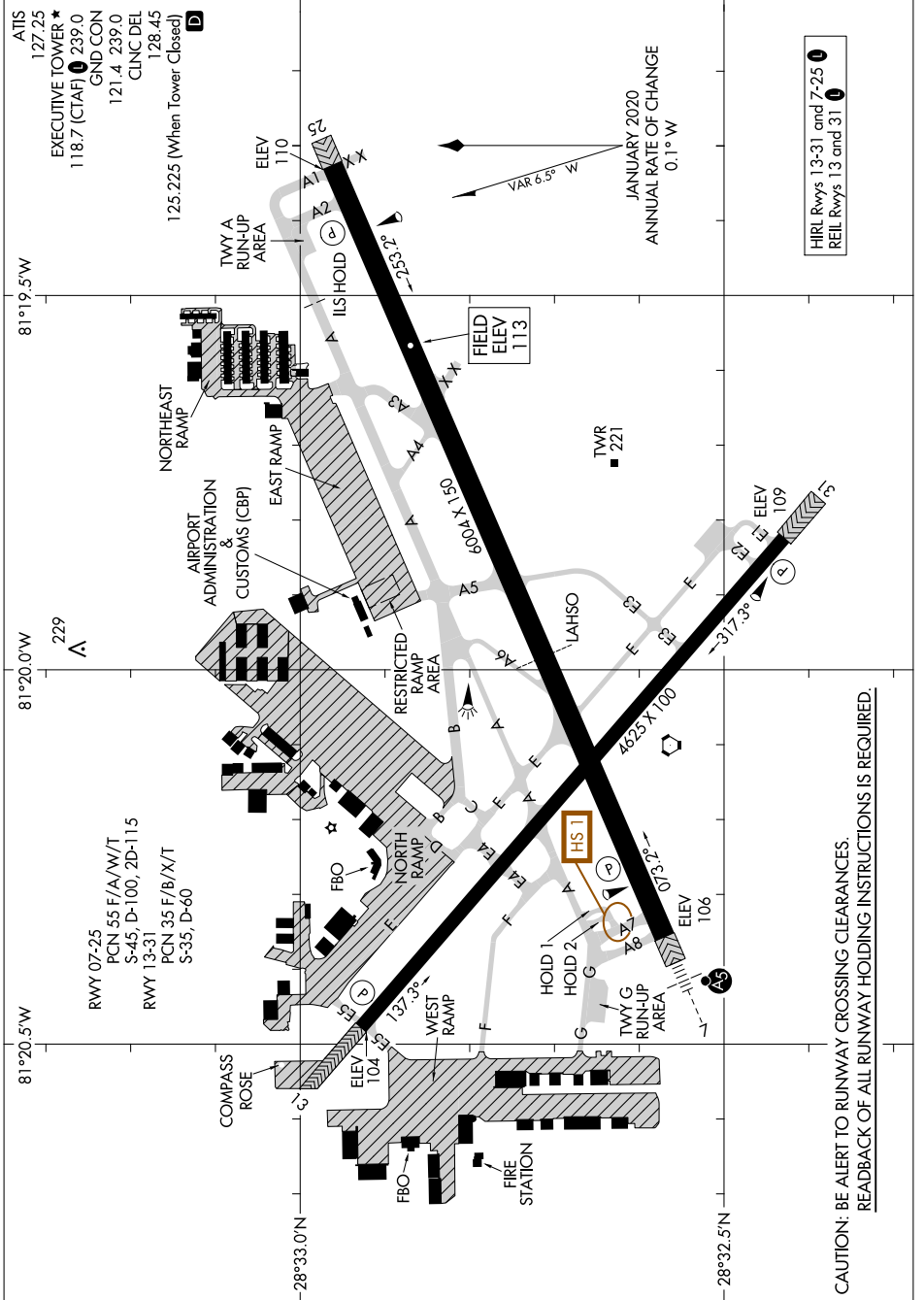


# AIRPORT DIAGRAM

AL-305 (FAA)

EXEC (O.R.L.)  
ORLANDO, FLORIDA



ATIS 127.25  
 EXECUTIVE TOWER ★ 118.7 (CTAF) ● 239.0  
 GND. CON 121.4 239.0  
 CLNC DEL 128.45  
 125.225 (When Tower Closed) [D]

JANUARY 2020  
 ANNUAL RATE OF CHANGE 0.1° W

HIRL Rwy 13-31 and 7-25 [L]  
 REIL Rwy 13 and 31 [L]

SE-3, 20 FEB 2025 to 20 MAR 2025

SE-3, 20 FEB 2025 to 20 MAR 2025

**CAUTION: BE ALERT TO RUNWAY CROSSING CLEARANCES.  
 READBACK OF ALL RUNWAY HOLDING INSTRUCTIONS IS REQUIRED.**

# AIRPORT DIAGRAM

ORLANDO, FLORIDA  
EXEC (O.R.L.)