

WAAS CH <b>58125</b> <b>W25A</b>	APP CRS <b>253°</b>	Rwy Idg TDZE Apt Elev	<b>6004</b> <b>113</b> <b>113</b>
--	------------------------	-----------------------------	---

# RNAV (GPS) RWY 25

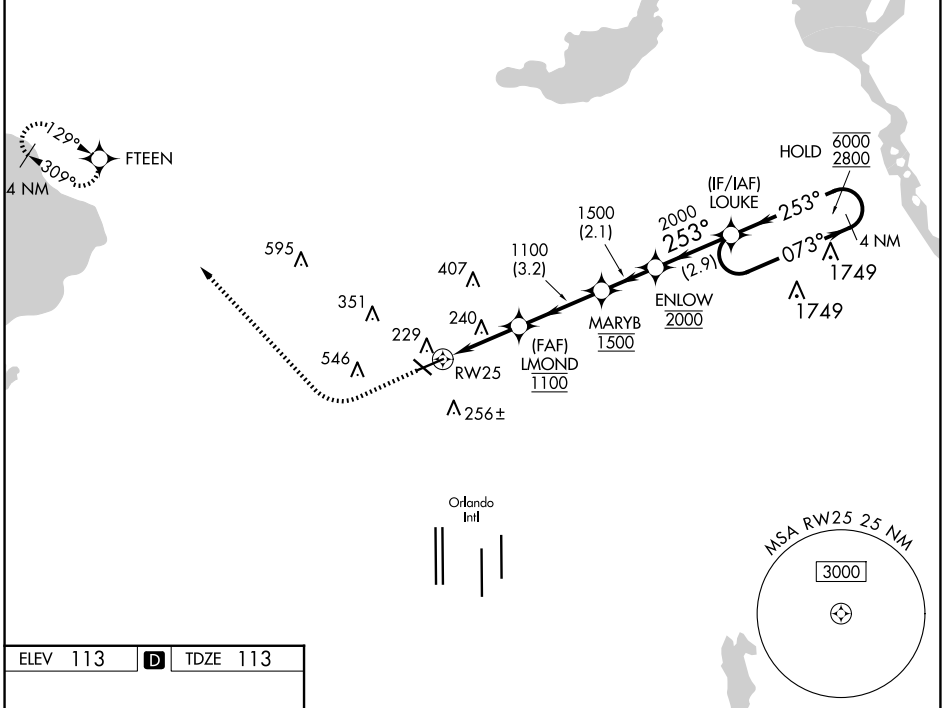
EXEC (ORL)

RNP APCH - GPS

**⚠** Circling Rwy 31 NA at night. For uncompensated Baro-VNAV systems, LNAV/VNAV NA below 2°C or above 54°C. In minimum visibility conditions, bright lights on highway ½ mile south of airport may be mistaken for runway lights.

**MISSED APPROACH:** Climb to 600 then climbing right turn to 1700 direct FTEEN and hold.

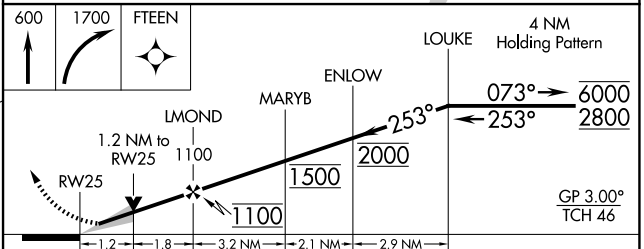
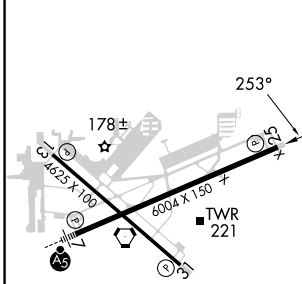
ATIS <b>127.25</b>	ORLANDO APP CON <b>124.8 351.9</b>	EXECUTIVE TOWER ★ <b>118.7 (CTAF) 239.0</b>	GND CON <b>121.4 239.0</b>	CLNC DEL <b>128.45</b>	CLNC DEL <b>125.225</b> (when twr closed)	UNICOM <b>122.95</b>
-----------------------	---------------------------------------	--	-------------------------------	---------------------------	---	-------------------------



SE-3, 20 FEB 2025 to 20 MAR 2025

SE-3, 20 FEB 2025 to 20 MAR 2025

ELEV 113	<b>D</b>	TDZE 113
----------	----------	----------



CATEGORY	A	B	C	D
LPV DA		313-¾	200 (200-¾)	
LNAV/VNAV DA		390-⅞	277 (300-⅞)	
LNAV MDA	500-1	387 (400-1)	500-1¼	387 (400-1¼)
<b>CIRCLING</b>	580-1 467 (500-1)	680-1 567 (600-1)	860-2¼ 747 (800-2¼)	860-2½ 747 (800-2½)