

(TOLLZ2.TOLLZ) 24361

AL-305 (FAA)

EXEC (ORL)
ORLANDO, FLORIDA

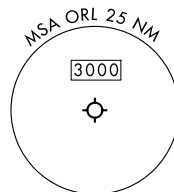
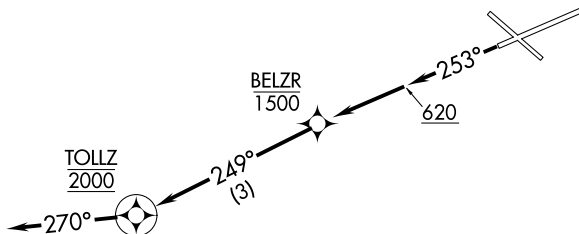
TOLLZ TWO DEPARTURE (RNAV)

ORLANDO DEP CON
119.775 351.9
ATIS
127.25
CLNC DEL
128.45
CLNC DEL
125.225 (when twr closed)
GND CON
121.4 239.0
EXECUTIVE TOWER ★
118.7 239.0

RNAV 1 - DME/DME/IRU or GPS required.

RADAR required.

**TOP ALTITUDE:
2000**



TAKEOFF MINIMUMS

Rwy 25: Standard with minimum climb of 500' per NM to 620.

NOTE: Chart not to scale.



DEPARTURE ROUTE DESCRIPTION

TAKEOFF RUNWAY 25: Climb on heading 253° to 620, then direct to cross BELZR at or below 1500, then on track 249° to cross TOLLZ at 2000, thence. . . .

. . . .on heading 270°, maintain 2000. Expect clearance to filed altitude within 10 minutes after departure.

TOLLZ TWO DEPARTURE (RNAV)

(TOLLZ2.TOLLZ) 21MAR24

ORLANDO, FLORIDA
EXEC (ORL)

SE-3, 20 FEB 2025 to 20 MAR 2025

SE-3, 20 FEB 2025 to 20 MAR 2025