

IMPERIAL BEACH, CALIFORNIA

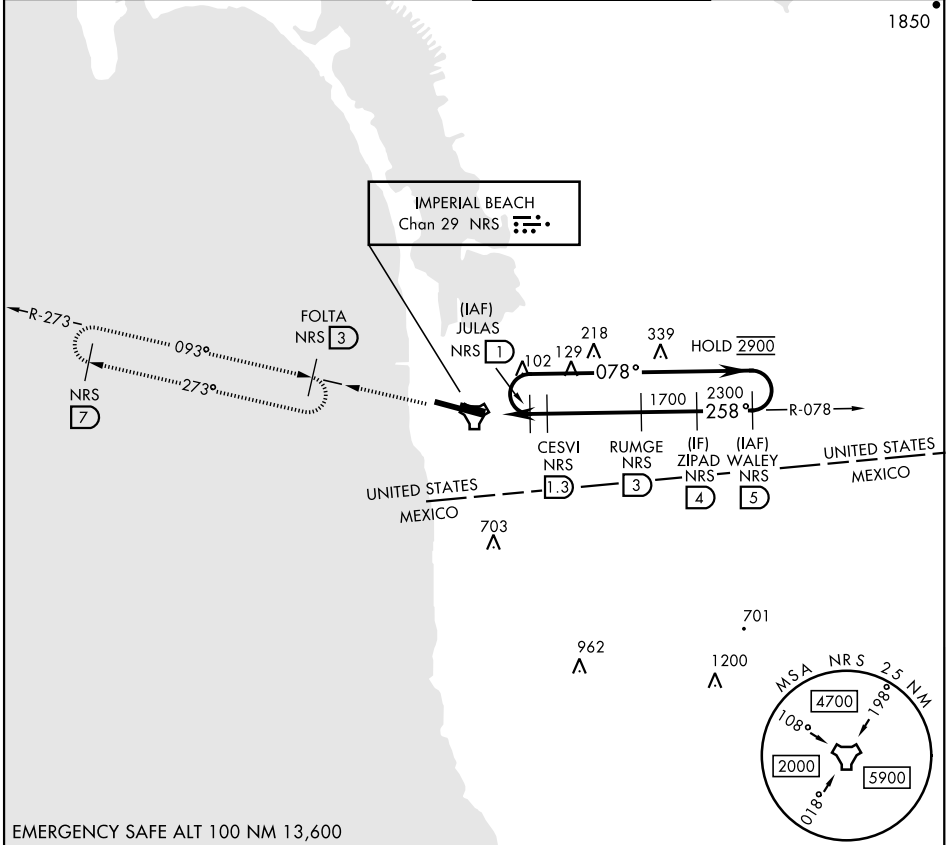
COPTER TACAN RWY 27

TACAN Chan 29	APCH CRS 258°	Rwy Idg THRE Arpt Elev	4998 20 23
-------------------------	-------------------------	------------------------------	---------------------------------------

AL-307 [USN]

IMPERIAL BEACH NOLF (REAM FIELD) (KNRS)

RADAR required.		MISSED APPROACH: Climb to 1800 on NRS TACAN R-078 to NRS, and R-273 to FOLTA. Continue climb in hold to 1800.	
▼ Max airspeed 90 KIAS.			
ATIS ★ /ASOS 276.2	SOCAL APP CON 125.15 317.55	IMPERIAL BEACH TOWER ★ 120.65 239.25	GND CON 285.575



SW-3, 20 FEB 2025 to 20 MAR 2025

SW-3, 20 FEB 2025 to 20 MAR 2025

EMERGENCY SAFE ALT 100 NM 13,600

<p>JULAS 1 078° →</p> <p>2900 ← 258°</p> <p>TACAN CISAV 0.5 CESVI 1.3 RUMGE 3 ZIPAD 4 WALEY 5</p> <p>1700 2300 2900</p> <p>0.8 NM 1.7 NM</p>		<p>1800 NRS R-078</p> <p>NRS R-273</p>	ELEV 23	THRE 20
<p>VDA RUMGE to thld</p> <p>5.35° TCH 50</p>				
CATEGORY	COPTER			
H-27	400-1/2 377 (400-1/2)			

IMPERIAL BEACH, CALIFORNIA
Amdt 6 01DEC22

32°34'N-117°07'W

IMPERIAL BEACH NOLF (REAM FIELD) (KNRS)

COPTER TACAN RWY 27