

VORTAC PSX 117.3 Chan 120	APP CRS 120°	Rwy Idg TDZE 13 Apt Elev 14	5001
---	------------------------	---	-------------

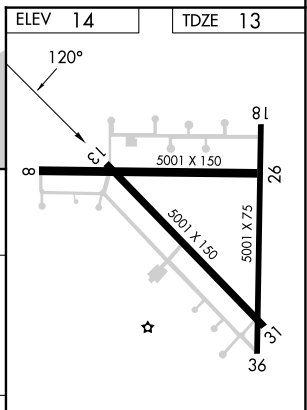
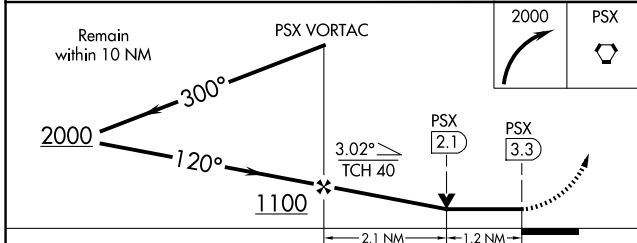
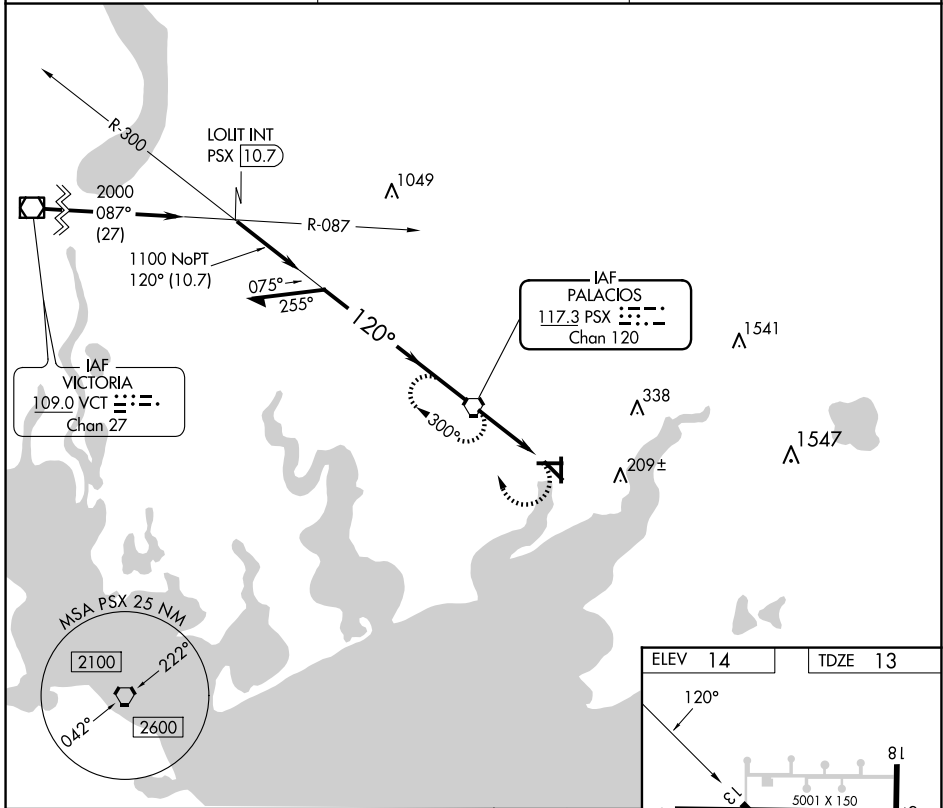
VOR RWY 13

PALACIOS MUNI (PSX)

⚠ When local altimeter setting not received, use Port Lavaca altimeter setting: increase all MDA's 60 feet and S-13 Cat C/D and Circling Cat C/D visibility ¼ SM. Rwy 13 helicopter visibility reduction below ¾ SM NA. Circling Rwy 8, 18, 26, 31, 36 NA at night.

⚠ MISSED APPROACH: Climbing right turn to 2000 direct PSX VORTAC and hold.

ASOS 118.025	HOUSTON CENTER 135.05 353.6	UNICOM 122.8 (CTAF) 0
------------------------	---------------------------------------	---------------------------------



CATEGORY	A	B	C	D
S-13		380-1 367 (400-1)		380-1¼ 367 (400-1¼)
CIRCLING	460-1 446 (500-1)	480-1 466 (500-1)	560-1½ 546 (600-1½)	700-2¼ 686 (700-2¼)

REIL Rwys 13 and 31	MIRL Rwy 13-31 0	FAF to MAP 3.3 NM			
Knots	60	90	120	150	180
Min:Sec	3:18	2:12	1:39	1:19	1:06

SC-5, 20 FEB 2025 to 20 MAR 2025

SC-5, 20 FEB 2025 to 20 MAR 2025