

PANAMA CITY, FLORIDA

# HI-ILS or LOC Y RWY 14L

LOC I-TYF	APCH CRS	Rwy Idg	10,008
111.5	138°	TDZE	14
		Arprt Elev	17

[USAF]

TYNDALL AFB (KPAM)

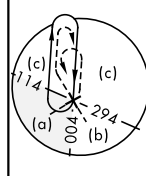
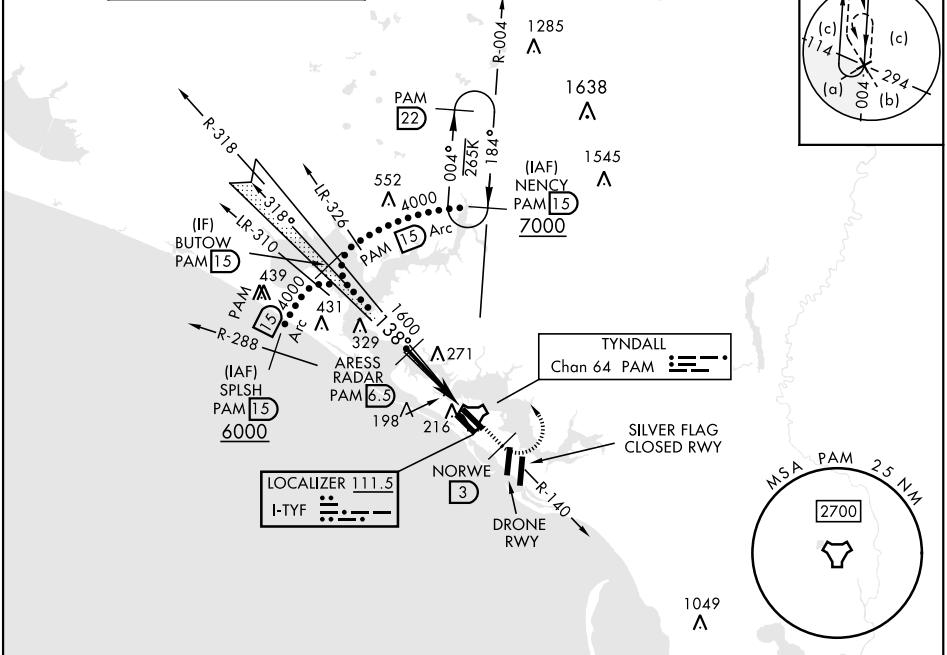
DME or RADAR required.

- \* When ALS inop, increase RVR to 40, vis to 3/4 mile.
- \*\* When ALS inop, increase vis to 1 1/2 miles.



MISSED APPROACH: Track outbound PAM TACAN R-140 to 3 DME (NORWE), then turn left to join PAM R-004 to 15 DME (NENCY) and hold. Maintain 3000.

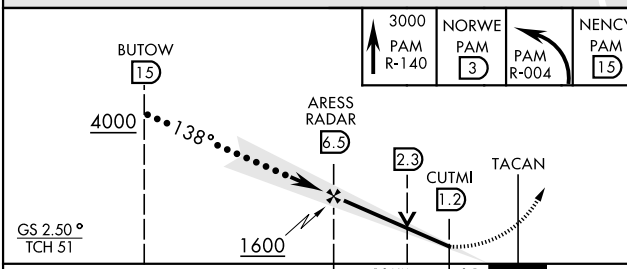
ATIS *	APP CON	TOWER *	GND CON	CLNC DEL	ASR/PAR
254.4	125.2 392.1 (N abv 5000') 120.825 379.3 (N blw 5000') 124.15 338.35 (S abv 5000') 119.775 317.45 (S blw 5000')	133.95 263.15	121.9 259.3	118.05 348.7	



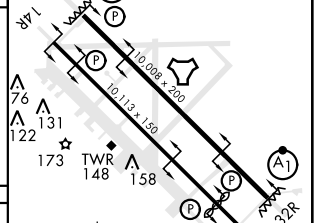
SE-3, 20 FEB 2025 to 20 MAR 2025

SE-3, 20 FEB 2025 to 20 MAR 2025

EMERG SAFE ALT 100 NM 3300



ELEV 17	TDZE 14
▲ 95	HIRL all Rwy's
	Rwy 32L Idg 9135'



CATEGORY	C	D	E
S-ILS 14L *	214/24	200	(200-1/2)
S-LOC 14L **	500/50	486	(500-1)
CIRCLING	540-1 1/2	580-2	620-2 1/4
	523 (600-1 1/2)	563 (600-2)	603 (700-2 1/4)

Recommend Rwy 14L-32R for apch end engagement of A-Gear.					
FAF to MAP 5.3 NM					
Knots	120	140	160	180	200
Min:Sec	2:39	2:16	1:59	1:46	1:35

PANAMA CITY, FLORIDA

30°04'N-85°34'W

TYNDALL AFB (KPAM)

Amtd 4 20MAY21

# HI-ILS or LOC Y RWY 14L