

HI-ILS or LOC Y RWY 32R

LOC I-PAM 110.1	APCH CRS 319°	Rwy Idg 10,008 TDZE 14 Arpt Elev 17
---------------------------	-------------------------	--

[USAF]

TYNDALL AFB (KPAM)

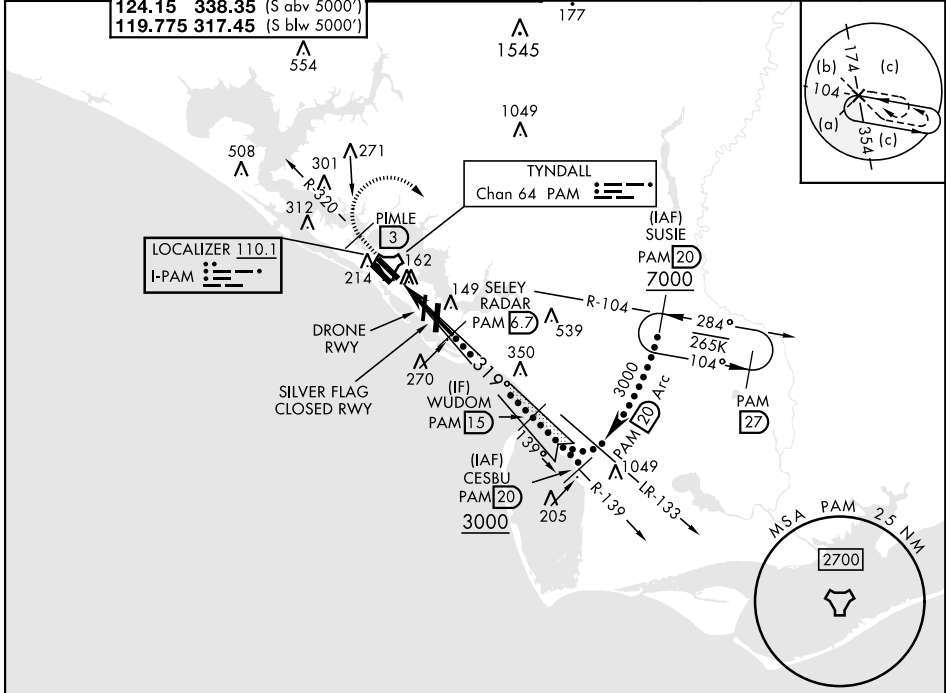
DME or RADAR required.

▼ *When ALS inop, increase RVR to 40, vis to ¾ mile.
**When ALS inop, increase RVR to 60, vis to 1½ miles.



MISSED APPROACH: Track outbound PAM R-320 to 3 DME (PIMLE), then turn right to join PAM TACAN R-104 to 20 DME (SUSIE) and hold. Maintain 3000.

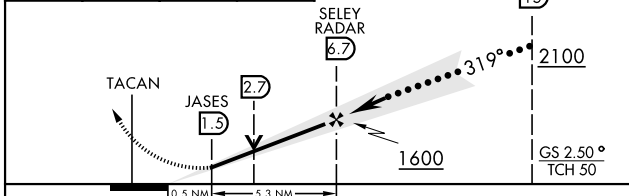
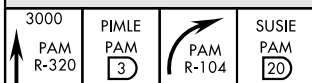
ATIS ★ 254.4	APP CON 125.2 392.1 (N abv 5000') 120.825 379.3 (N blw 5000') 124.15 338.35 (S abv 5000') 119.775 317.45 (S blw 5000')	TOWER ★ 133.95 263.15	GND CON 121.9 259.3	CLNC DEL 118.05 348.7	ASR/PAR
------------------------	--	---------------------------------	-------------------------------	---------------------------------	---------



SE-3, 20 FEB 2025 to 20 MAR 2025

SE-3, 20 FEB 2025 to 20 MAR 2025

EMERG SAFE ALT 100 NM 3300



ELEV 17	TDZE 14
---------	---------

HIRL all rwys
Rwy 32L Idg 9135'

Recommend Rwy 14L-32R for apch end engagement of A-Gear.

FAF to MAP 5.2 NM

Knots	120	140	160	180	200
Min:Sec	2:36	2:14	1:57	1:44	1:34

CATEGORY	C	D	E
S-ILS 32R*	214/24	200 (200-½)	
S-LOC 32R**	540/55	526 (600-1)	
CIRCLING	540-1½ 523 (600-1½)	580-2 563 (600-2)	620-2¼ 603 (700-2¼)

HI-ILS or LOC Y RWY 32R