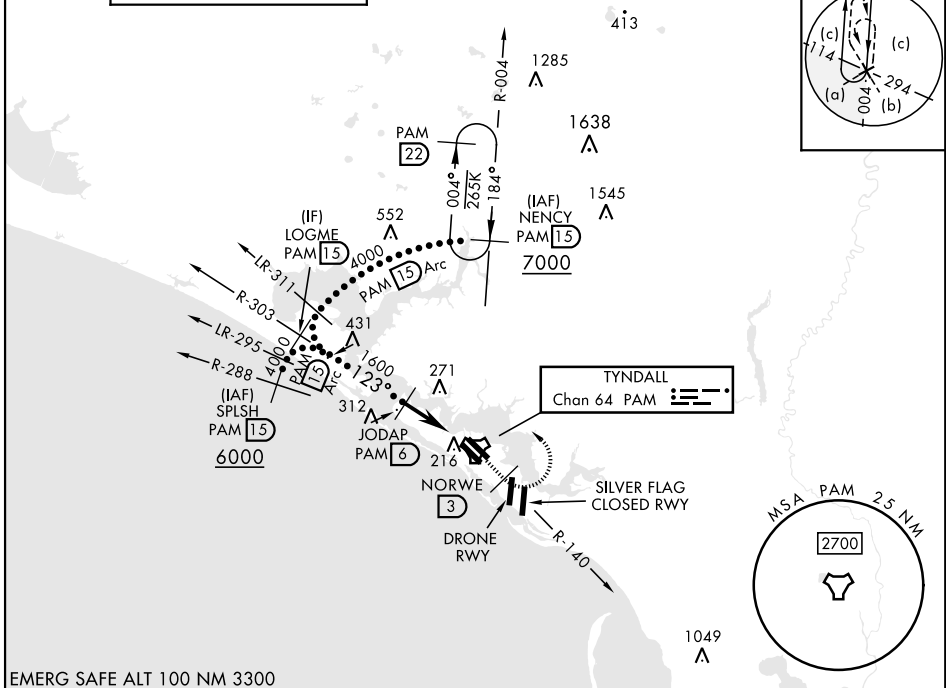


# HI-TACAN Y RWY 14R

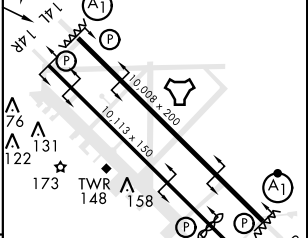
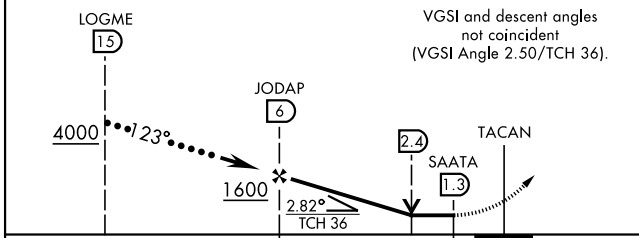
TACAN PAM Chan <b>64</b>	APCH CRS <b>123°</b>	Rwy Idg <b>10,113</b> TDZE <b>15</b> Arprt Elev <b>17</b>	[USAF]	TYNDALL AFB (KPAM)
-----------------------------	-------------------------	---	--------	--------------------

**MISSED APPROACH:** Track outbound PAM TACAN R-140 to 3 DME (NORWE), then turn left to join PAM R-004 to 15 DME (NENCY) and hold. Maintain 3000.

ATIS ★ <b>254.4</b>	APP CON <b>125.2</b> 392.1 (N abv 5000') <b>120.825</b> 379.3 (N blw 5000') <b>124.15</b> 338.35 (S abv 5000') <b>119.775</b> 317.45 (S blw 5000')	TOWER ★ <b>133.95</b> 263.15	GND CON <b>121.9</b> 259.3	CLNC DEL <b>118.05</b> 348.7	ASR/PAR
------------------------	--	---------------------------------	-------------------------------	---------------------------------	---------



EMERG SAFE ALT 100 NM 3300	3000 PAM R-140	NORWE PAM 3	NENCY PAM 15	ELEV 17	TDZE 15
----------------------------	----------------	-------------	--------------	---------	---------



CATEGORY	C	D	E
S-14R	480-1 $\frac{3}{8}$	465	(500-1 $\frac{3}{8}$ )
CIRCLING	540-1 $\frac{1}{2}$ 523 (600-1 $\frac{1}{2}$ )	580-2 563 (600-2)	620-2 $\frac{1}{4}$ 603 (700-2 $\frac{1}{4}$ )

Recommend Rwy 14L-32R for apch end engagement of A-Gear.

# HI-TACAN Y RWY 14R

SE-3, 20 FEB 2025 to 20 MAR 2025

SE-3, 20 FEB 2025 to 20 MAR 2025