

PANAMA CITY, FLORIDA

# RNAV (GPS) RWY 14R

WAAS CH 71278 W14B	APCH CRS 138°	Rwy ldg 10,113	TDZE 15	Arprt Elev 17
--------------------------	------------------	-------------------	------------	------------------

- (USAF)

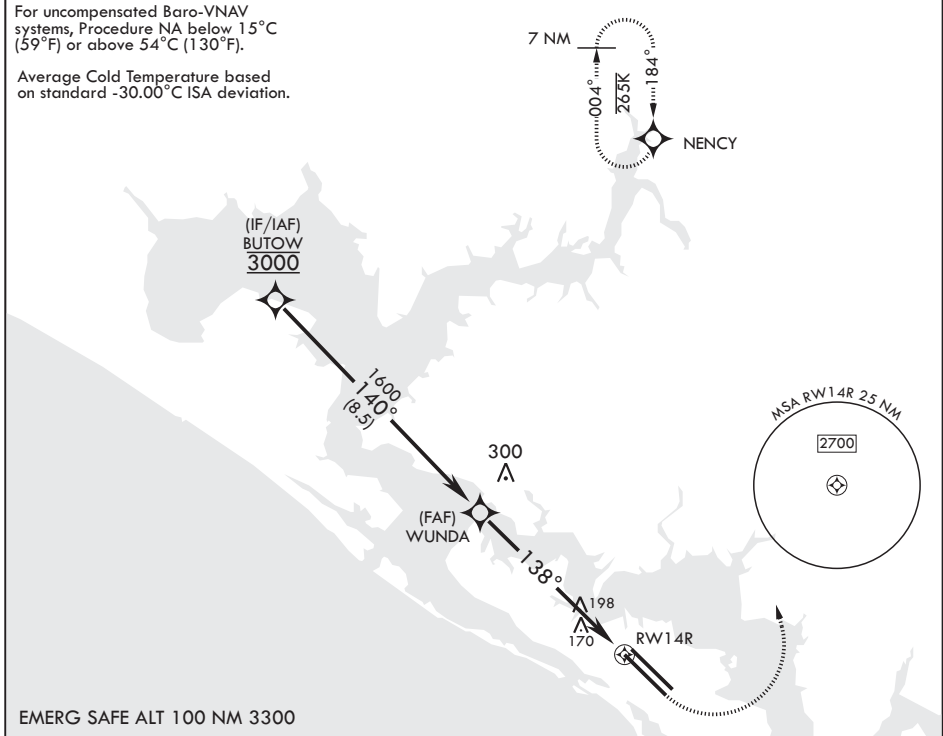
TYNDALL AFB (KPAM)

RNP APCH MISSED APPROACH: Climb to 600 then climbing left turn to 3000 direct NENCY and hold.

ATIS ★ 254.4	APP CON/DEP CON 119.775 317.45 BLW 5000' 124.15 338.35 ABV 5000'	TOWER ★ 133.95 263.15	GND CON 121.9 259.3	CLNC DEL 118.05 348.7	ASR/PAR
-----------------	--	--------------------------	------------------------	--------------------------	---------

For uncompensated Baro-VNAV systems, Procedure NA below 15°C (59°F) or above 54°C (130°F).

Average Cold Temperature based on standard -30.00°C ISA deviation.



EMERG SAFE ALT 100 NM 3300

BUTOW	VGSi and RNAV glidepath not coincident (VGSi angle 2.50/TCH 36).					600	3000	NENCY	ELEV 17	TDZE 15
3000	140°					WUNDA	138°		Rwy 32L ldg 9135'	
GP 2.50°	1600					1.6 NM to RWY 14R	5.8 NM		BCN 173	
TCH 45	170°					RWY 14R	10,008 x 200		TWR 148	
CATEGORY	A	B	C	D	E	HIRL all Rwys Recommend Rwy 14L-32R for apch end engagement of A-Gear.				
LPV DA	215-3/4		200	(200-3/4)						
LNAV/VNAV DA	420-1 1/8		405	(500-1 1/8)						
LNAV MDA	500-1	485 (500-1)	500-1 1/8	485	(500-1 1/8)					
CIRCLING	540-1	523 (600-1)	540-1 1/2 523 (600-1 1/2)	580-2 563 (600-2)	620-2 1/4 603 (700-2 1/4)					

PANAMA CITY, FLORIDA

30°04'N - 85°34'W

TYNDALL AFB (KPAM)

Amdt 3 22APR21

# RNAV (GPS) RWY 14R

SE-3, 20 FEB 2025 to 20 MAR 2025

SE-3, 20 FEB 2025 to 20 MAR 2025