

PANAMA CITY, FLORIDA

# RNAV (GPS) RWY 32R

WAAS CH 52209 W32A	APCH CRS 319°	Rwy ldg TDZE Arprt Elev	10,008 14 17
--------------------------	------------------	-------------------------------	--------------------

(USAF)

TYNDALL AFB (KPAM)

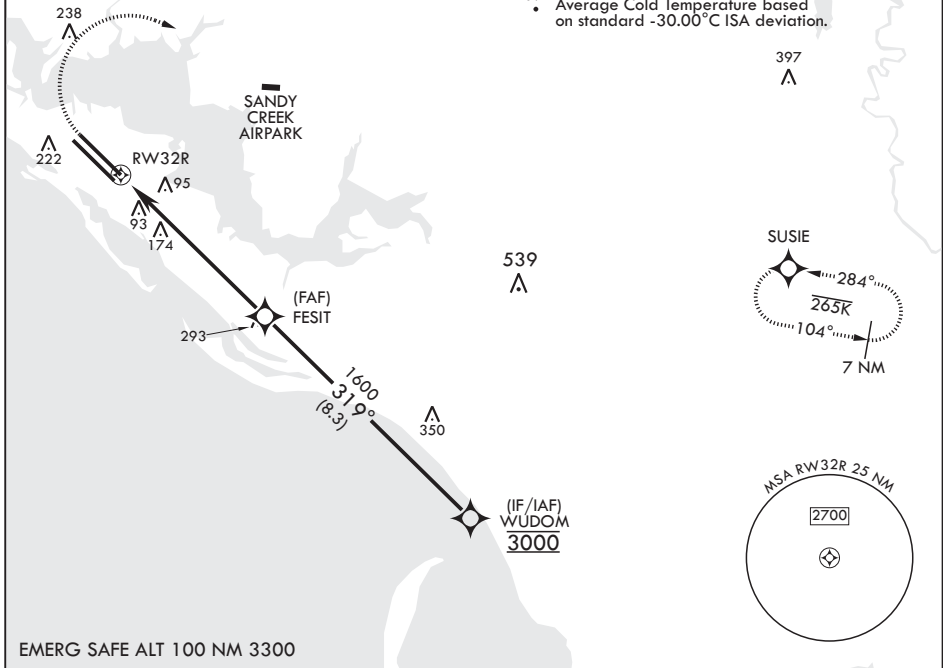
RNP APCH	ALSF-1	MISSED APPROACH: Climb to 600 then climbing right turn to 3000 direct SUSIE and hold.
----------	--------	---

▼ \* When ALS inop increase RVR to 40, vis to 3/4 mile.  
 \*\* When ALS inop increase RVR to 55, vis to 1 mile.

ATIS★ 254.4	APP CON/DEP CON 119.775 317.45 BLW 5000' 124.15 338.35 ABV 5000'	TOWER★ 133.95 263.15	GND CON 121.9 259.3	CLNC DEL 118.05 348.7	ASR/PAR
----------------	--	-------------------------	------------------------	--------------------------	---------

\*\*\* When ALS inop increase CAT AB RVR to 55, vis to 1 mile, CAT CDE vis to 1 3/8 miles.

For uncompensated Baro-VNAV systems, Procedure NA below 15°C (59°F) or above 54°C (130°F).  
 109 Average Cold Temperature based on standard -30.00°C ISA deviation.



SE-3, 20 FEB 2025 to 20 MAR 2025

SE-3, 20 FEB 2025 to 20 MAR 2025

EMERG SAFE ALT 100 NM 3300

600 crs 318°	3000 SUSIE	WUDOM 3000 ELEV 17 TDZE 14			
		Rwy 32L ldg 9135' 			
CATEGORY	A	B	C	D	E
LPV DA*	214/24		200	(200-½)	
LNAV/VNAV DA**	362/30		348	(400-¾)	
LNAV MDA***	480/24	466 (500-½)	480/50	466	(500-1)
Ⓢ CIRCLING	540-1	523 (600-1)	540-1½ 523 (600-1½)	580-2 563 (600-2)	620-2¼ 603 (700-2¼)

HIRL all Rwys  
 Recommend Rwy 14L-32R for  
 apch end engagement of A-Gear

PANAMA CITY, FLORIDA

30°04'N - 85°34'W

TYNDALL AFB (KPAM)

Amdt 3 22APR21

# RNAV (GPS) RWY 32R