

PATUXENT RIVER, MARYLAND

# ILS or LOC/DME RWY 6

LOC/DME I-NHK <b>108.7</b> Chan <b>24</b>	APCH CRS <b>059°</b>	Rwy ldg <b>11,799</b> TDZE <b>39</b> Arprt Elev <b>39</b>
---	-------------------------	---

[USN]

PATUXENT RIVER NAS (TRAPNELL FIELD) (KNHK)

▼ \* When ALS inop, increase vis to ¾ mile.  
\*\* When ALS inop, increase CAT AB vis to 1 mile;  
CAT CD vis to 1½ miles.

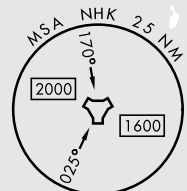
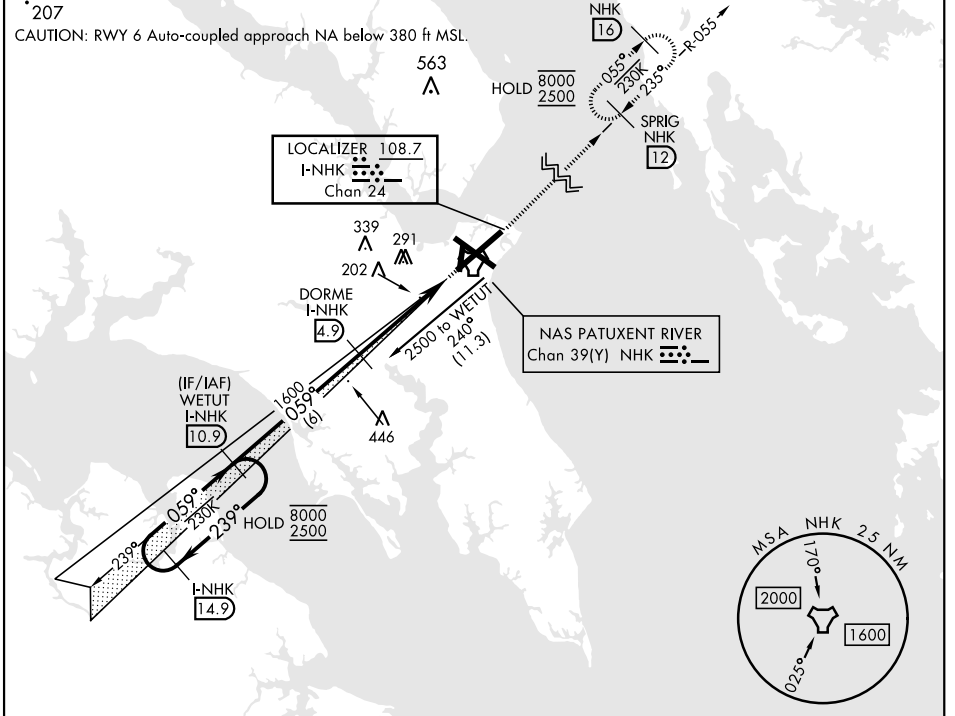


MISSED APPROACH: Climb to 2500 heading 059° and intercept NHK TACAN R-055 to SPRIG and hold.

ATIS <b>322.425</b>	APP/DEP CON * <b>121.0 250.3</b>	TOWER <b>123.7 343.65</b>	GND CON <b>120.6 336.4</b>	CLNC DEL <b>135.2 316.125</b>	ASR/PAR
------------------------	-------------------------------------	------------------------------	-------------------------------	----------------------------------	---------

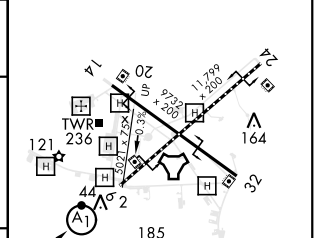
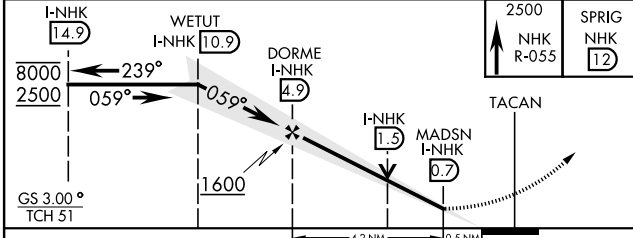
\* 207

CAUTION: RWY 6 Auto-coupled approach NA below 380 ft MSL.



ELEV	39	TDZE	39
------	----	------	----

EMERG SAFE ALT 100 NM 5100



CATEGORY	A	B	C	D
S-ILS 6 *	239-½ 200 (200-½)			
S-LOC 6 **	500-½ 461	(500-½)	500-1 461	(500-1)
CIRCLING	560-1	600-1	620-1½	680-2
	521 (600-1)	561 (600-1)	581 (600-1½)	641 (700-2)

HIRL Rwy 6-24, 14-32  
TDZL/Cl Rwy 6

PATUXENT RIVER, MARYLAND

38° 17' N-76° 25' W

PATUXENT RIVER NAS (TRAPNELL FIELD) (KNHK)

Orig 02DEC21

# ILS or LOC/DME RWY 6

NE-3, 20 FEB 2025 to 20 MAR 2025

NE-3, 20 FEB 2025 to 20 MAR 2025