

NDB/DME RWY 6

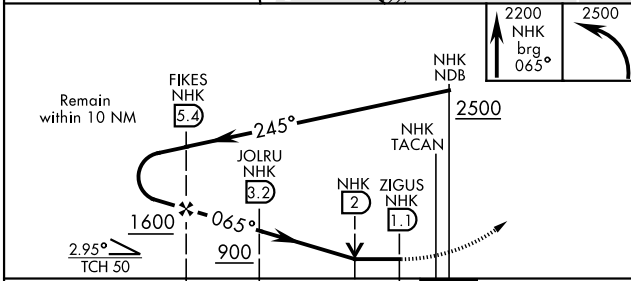
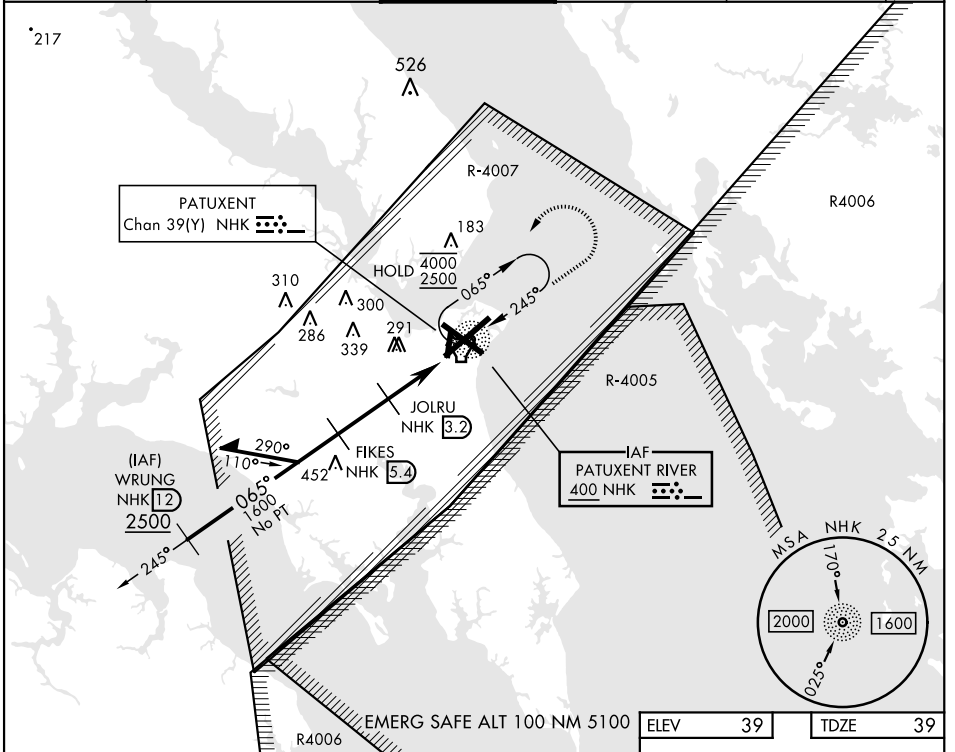
NDB NHK 400	APCH CRS 065°	Rwy ldg 11,799 TDZE 39 Arprt Elev 39
-----------------------	-------------------------	---

[USN]

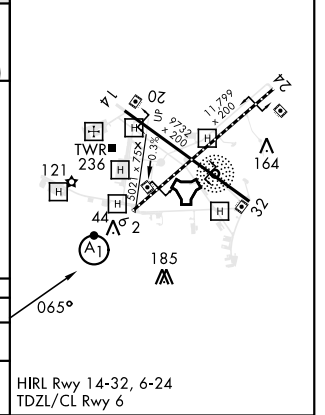
PATUXENT RIVER NAS (TRAPNELL FIELD) (KNKH)

DME or RADAR required		ALSF-1 	MISSED APPROACH: Climb to 2200 on 065° bearing from NHK NDB, then climbing left turn to 2500 direct NHK NDB and hold.
*When ALS inop, increase CAT AB vis to 1 mile, CAT CD vis to 1½ miles.			

ATIS 322.425	APP/DEP CON * 121.0 250.3	TOWER 123.7 343.65	GND CON 120.6 336.4	CLNC DEL 135.2 316.125	ASR/PAR
------------------------	-------------------------------------	------------------------------	-------------------------------	----------------------------------	---------



ELEV	39	TDZE	39
------	----	------	----



CATEGORY	A	B	C	D
S-6 *	560-¾ 521 (600-¾)		560-1 521 (600-1)	
CIRCLING	560-1 521 (600-1)	600-1 561 (600-1)	620-1½ 581 (600-1½)	680-2 641 (700-2)

NDB/DME RWY 6

NE-3, 20 FEB 2025 to 20 MAR 2025

NE-3, 20 FEB 2025 to 20 MAR 2025