

PATUXENT RIVER, MARYLAND

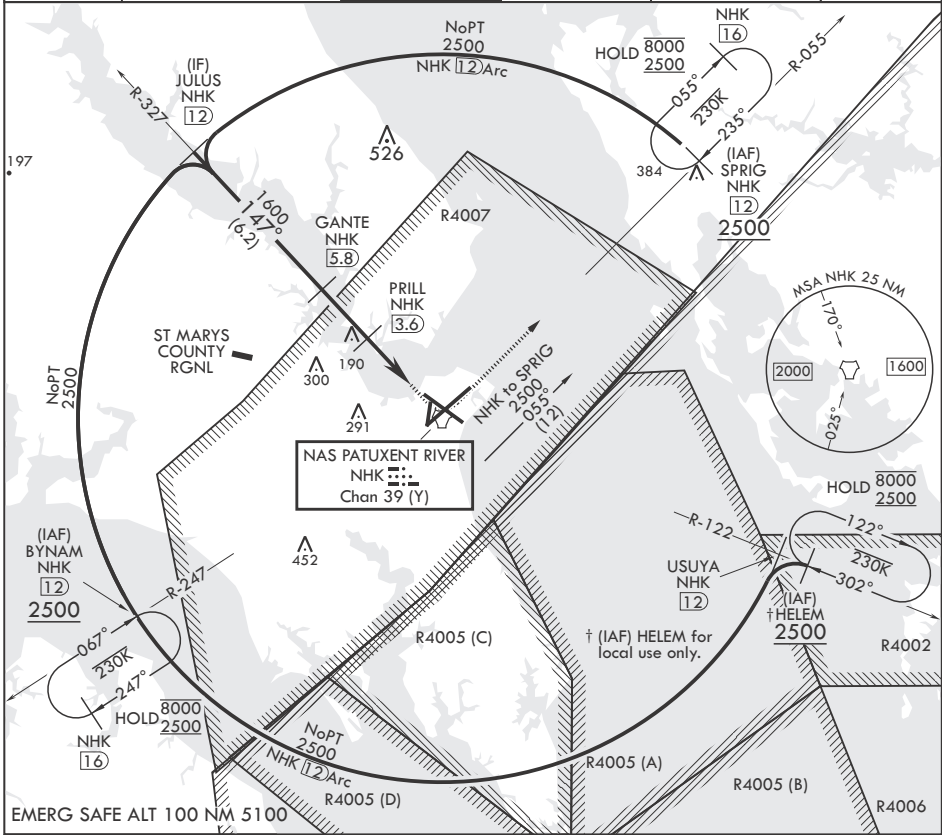
# TACAN Z RWY 14

TACAN NHK Chan 39 (Y)	APCH CRS 147°	Rwy ldg TDZE 27 Arprt Elev 39	9732
-----------------------	---------------	----------------------------------	------

(-USN) PATUXENT RIVER NAS (TRAPNELL FLD) (KNHK)

**MISSED APPROACH:** Climb to 500, then climbing left turn to 2500 on NHK TACAN R-055 to SPRIG and hold.

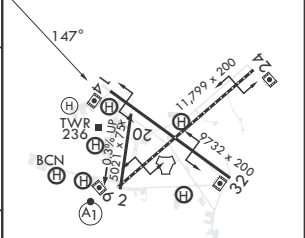
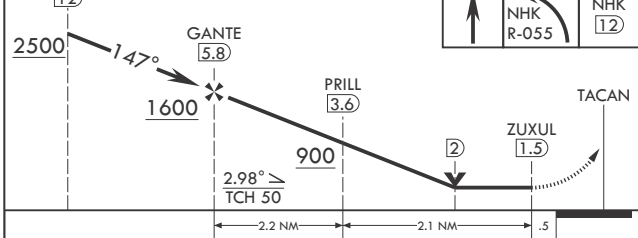
ATIS 322.425	APP CON/DEP CON* 121.0 250.3	TOWER 123.7 343.65	GND CON 120.6 336.4	CLNC DEL 135.2 316.125	ASR/PAR
--------------	------------------------------	--------------------	---------------------	------------------------	---------



NE-3, 20 FEB 2025 to 20 MAR 2025

NE-3, 20 FEB 2025 to 20 MAR 2025

JULUS 12	500	2500	SPRIG NHK 12	ELEV 39	TDZE 27
----------	-----	------	--------------	---------	---------



CATEGORY	A	B	C	D
S-14	400-1	373	(400-1)	
CIRCLING	560-1 521 (600-1)	600-1 561 (600-1)	620-1½ 581 (600-1½)	680-2 641 (700-2)

HIRL Rwy 6-24, 14-32  
TDZ/CL Rwy 6

PATUXENT RIVER, MARYLAND

38°17'N - 76°25'W PATUXENT RIVER NAS (TRAPNELL FLD) (KNHK)

Orig 02DEC21

# TACAN Z RWY 14