

LOC I-PDT <b>110.3</b>	APP CRS <b>254°</b>	Rwy ldg <b>6301</b>
		TDZE <b>1487</b>
		Apt Elev <b>1497</b>

# ILS or LOC RWY 26

EASTERN OREGON RGNL AT PENDLETON (PDT)

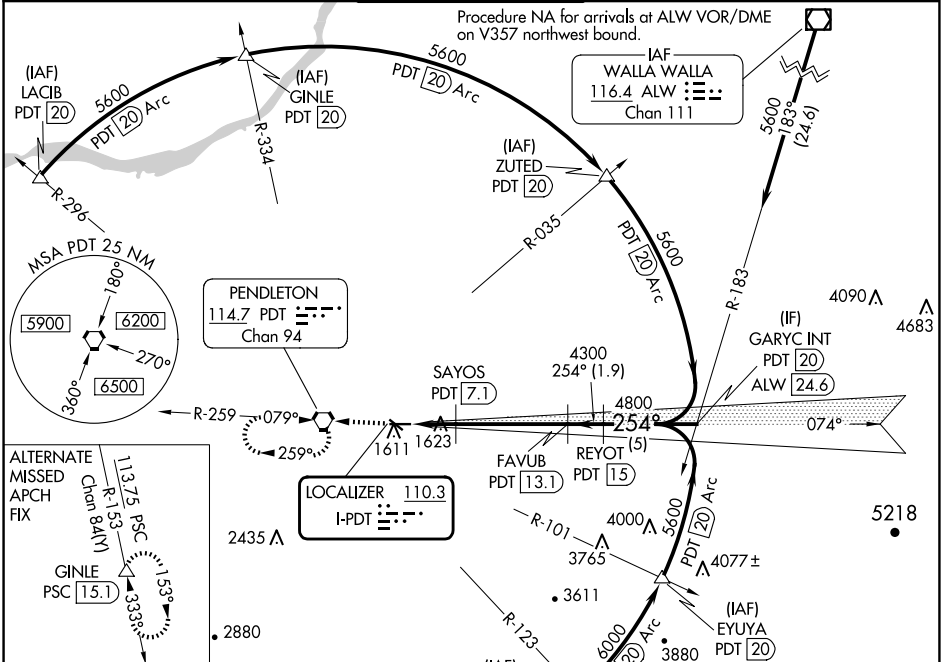
DME required.

**▼** DME from PDT VORTAC. Simultaneous reception of I-PDT and PDT DME required.  
**▲** \*RVR 1800 authorized with use of FD or AP or HUD to DA.

MALSR

MISSED APPROACH: Climb to 4200 direct PDT VORTAC and hold, continue climb-in-hold to 4200.

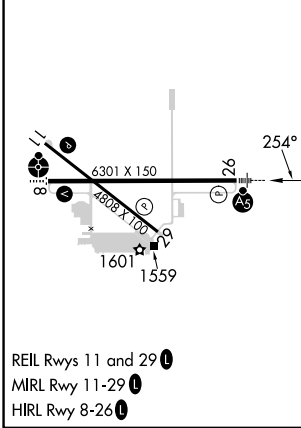
ASOS <b>118.325</b>	SPOKANE APP CON * <b>133.15 379.15</b>	PENDLETON TOWER * <b>119.7 (CTAF) 257.8</b>	GND CON <b>121.9 257.8</b>	UNICOM <b>122.95</b>
------------------------	---	--	-------------------------------	-------------------------



NW-1, 20 FEB 2025 to 20 MAR 2025

NW-1, 20 FEB 2025 to 20 MAR 2025

ELEV 1497	<b>D</b>	TDZE 1487
-----------	----------	-----------



4200	PDT	VGSI and ILS glidepath not coincident (VGSI Angle 3.00/TCH 48).	REYOT PDT (15)	GARYC INT PDT (20)
2320	PDT (4.6)		FAVUB PDT (13.1)	4800
	PDT (5.7)		SAYOS PDT (7.1)	4300
				5600
				GS 3.00° TCH 55
				1.1 NM, 1.4 NM, 6 NM, 1.9 NM, 5 NM
CATEGORY	A	B	C	D
S-ILS 26*	1687/24 200 (200-½)			
S-LOC 26	1880/24	393 (400-½)	1880/40	393 (400-¾)
CIRCLING	1920-1	1960-1	1980-1½	2200-2¼
	423 (500-1)	463 (500-1)	483 (500-1½)	703 (800-2¼)