


WAAS CH 78412 W26A	APP CRS 254°	Rwy Idg TDZE Apt Elev	6301 1487 1497
---------------------------------	------------------------	-----------------------------	---

RNAV (GPS) RWY 26

EASTERN OREGON RGNL AT PENDLETON (PDT)

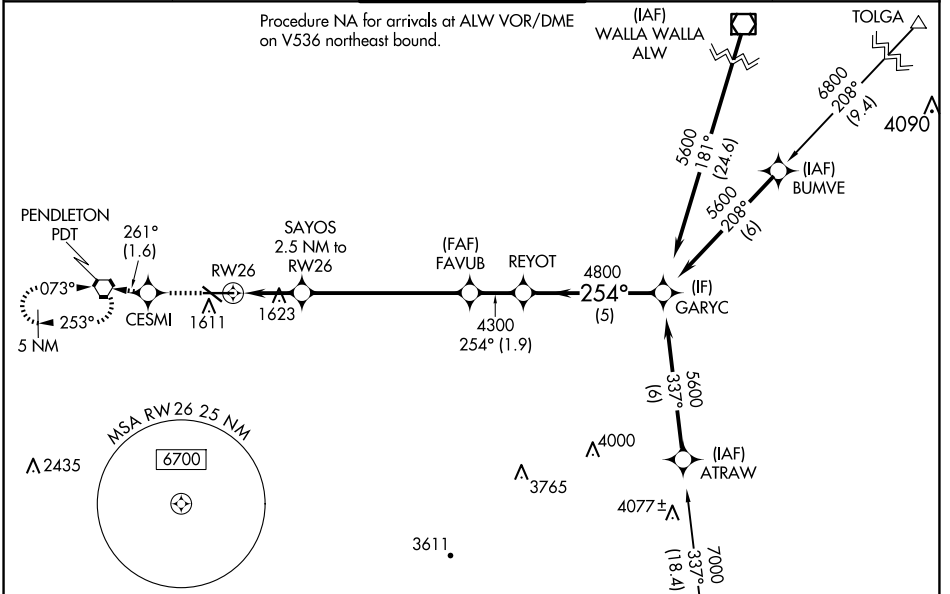
RNP APCH.

⚠ Circling Rwy 11 NA at night. For uncompensated Baro-VNAV systems, LNAV/VNAV NA below -17°C or above 54°C. For inop ALS, increase LNAV/VNAV all Cats visibility to RVR 4500.
#RVR 1800 authorized with the use of FD or AP or HUD to DA.

MALSR 

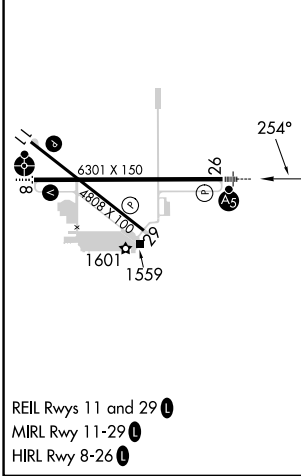
MISSED APPROACH: Climb to 4300 direct CESMI and on track 261° to PDT VORTAC and hold, continue climb-in-hold to 4300.

ASOS 118.325	SPOKANE APP CON * 133.15 379.15	PENDLETON TOWER * 119.7 (CTAF) 257.8	GND CON 121.9 257.8	UNICOM 122.95
------------------------	---	--	-------------------------------	-------------------------



ELEV 1497	D	TDZE 1487
------------------	----------	------------------

Procedure NA for arrivals at LACED on V4 southeast bound.



4300	CESMI	Ir 261°	PDT	VGSI and RNAV glidepath not coincident (VGSI Angle 3.00/TCH 48).	GARYC
* LNAV only					
	SAYOS 2.5 NM to RWY 26	FAVUB 4300	REYOT 4300	5600	
	* 1.1 NM to RWY 26	2320*	4800	5600	
	1.1 NM	1.4 NM	6 NM	1.9 NM	5 NM

CATEGORY	A	B	C	D
LPV DA#		1687/24	200 (200-½)	
LNAV/VNAV DA		1800/24	313 (400-½)	
LNAV MDA	1880/24	393 (400-½)	1880/40	393 (400-¾)
C CIRCLING	1920-1 423 (500-1)	1960-1 463 (500-1)	1980-1½ 483 (500-1½)	2200-2¼ 703 (800-2¼)

NW-1, 20 FEB 2025 to 20 MAR 2025

NW-1, 20 FEB 2025 to 20 MAR 2025