

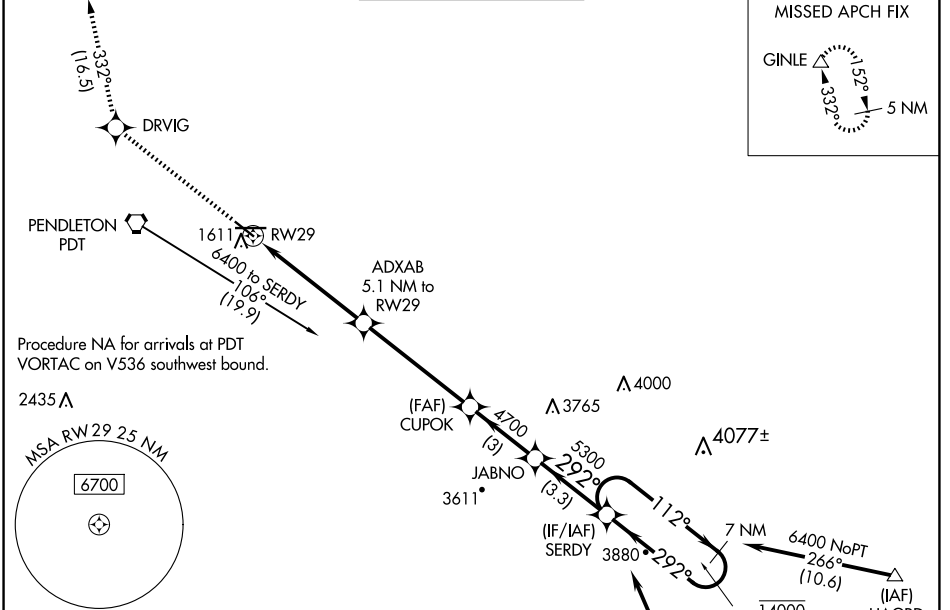
WAAS CH 42513 W29A	APP CRS 292°	Rwy Idg 4808 TDZE 1494 Apt Elev 1494
---------------------------------	------------------------	---

RNAV (GPS) RWY 29

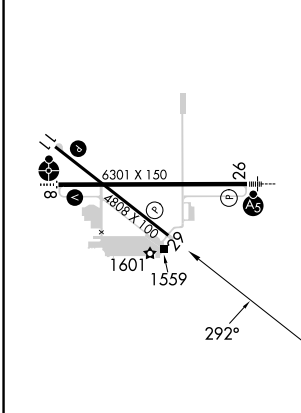
EASTERN OREGON RGNL AT PENDLETON (PDT)

RNP APCH - GPS.	<p>⚠ Rwy 29 helicopter visibility reduction below 1 SM NA. ⚠ Baro-VNAV NA. Straight-in Rwy 29 NA at night, Circling Rwy 8, 29 NA at night.</p>	MISSED APPROACH: Climb to 5000 direct DRVIG and on track 332° to GINLE and hold.
-----------------	--	--

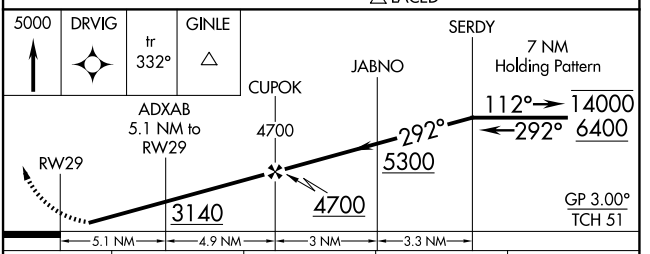
ASOS 118.325	SPOKANE APP CON * 133.15 379.15	PENDLETON TOWER * 119.7 (CTAF) 0 257.8	GND CON 121.9 257.8	UNICOM 122.95
------------------------	---	--	-------------------------------	-------------------------



ELEV 1494	D	TDZE 1494
-----------	----------	-----------



REIL Rws 11 and 29 **Ⓛ**
MIRL Rwy 11-29 **Ⓛ**
HIRL Rwy 8-26 **Ⓛ**



CATEGORY	A	B	C	D
LPV DA	1769-1		275 (300-1)	
LNAV/ VNAV DA	1800-1		306 (400-1)	
LNAV MDA	1880-1	386 (400-1)	1880-1½	386 (400-1½)
C CIRCLING	1920-1 426 (500-1)	1960-1 466 (500-1)	1980-1½ 486 (500-1½)	2200-2¼ 706 (800-2¼)

NW-1, 20 FEB 2025 to 20 MAR 2025

NW-1, 20 FEB 2025 to 20 MAR 2025