

VORTAC PDT <b>114.7</b> Chan <b>94</b>	APP CRS <b>079°</b>	Rwy Idg TDZE <b>1486</b> Apt Elev <b>1497</b>
--	------------------------	---

# VOR RWY 8

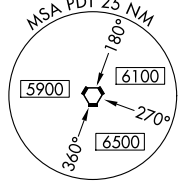
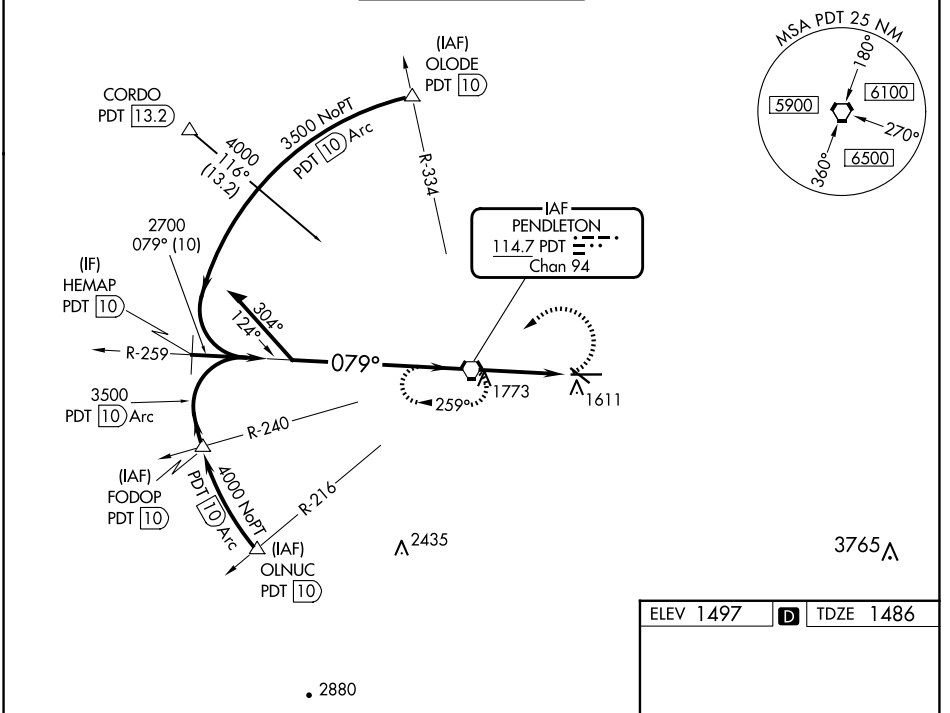
EASTERN OREGON RGNL AT PENDLETON (PDT)

**⚠** Circling to Rwy 11 NA at night. Rwy 8 helicopter visibility reduction below 3/4 SM NA. VDP NA when using Walla Walla altimeter setting. When local altimeter setting not received, use Walla Walla altimeter setting and increase all MDA 140 feet, increase S-8 Cat C/D visibility to 1 1/8 SM, Circling Cat C visibility 1/4 SM and Cat D visibility 1/2 SM. For inop ALS, increase S-8 Cat C visibility to 1 1/8 SM. For inop ALS when using Walla Walla altimeter setting, increase S-8 Cat C/D visibility to 2 SM.

**ODALS**

**MISSED APPROACH:**  
Climbing left turn to 4000 direct PDT VORTAC and hold, continue climb-in-hold to 4000.

ASOS <b>118.325</b>	SPOKANE APP CON * <b>133.15 379.15</b>	PENDLETON TOWER * <b>119.7 (CTAF) 257.8</b>	GND CON <b>121.9 257.8</b>	UNICOM <b>122.95</b>
------------------------	---	--	-------------------------------	-------------------------



NW-1, 20 FEB 2025 to 20 MAR 2025

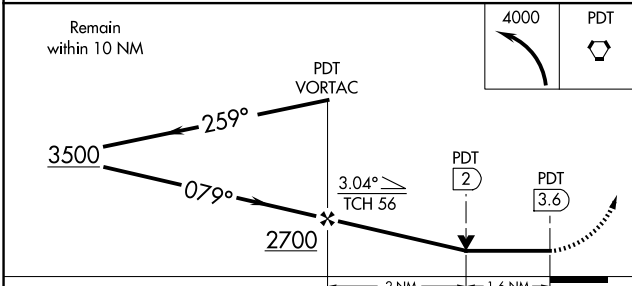
NW-1, 20 FEB 2025 to 20 MAR 2025

ELEV 1497	<b>D</b>	TDZE 1486
-----------	----------	-----------

**REIL Rwy 11 and 29**  
**MIRL Rwy 11-29**  
**HIRL Rwy 8-26**

FAF to MAP 3.6 NM

Knots	60	90	120	150	180
Min:Sec	3:36	2:24	1:48	1:26	1:12



CATEGORY	A	B	C	D
S-8	2040-3/4 554 (600-3/4)		2040-1 1/2 554 (600-1 1/2)	2040-1 3/4 554 (600-1 3/4)
<b>C</b> CIRCLING	2040-1 543 (600-1)		2040-1 5/8 543 (600-1 5/8)	2200-2 1/4 703 (800-2 1/4)