

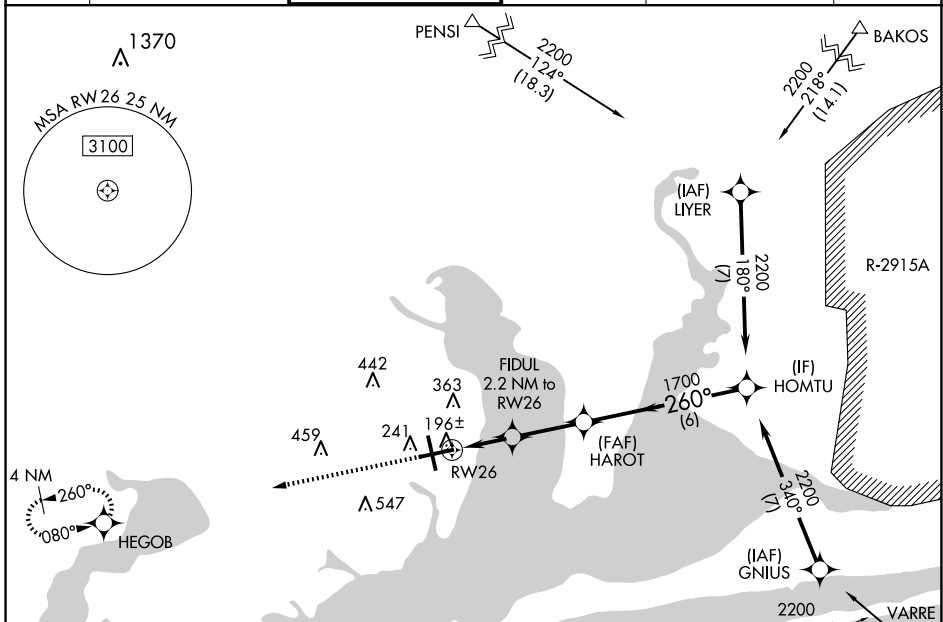
WAAS CH <b>90119</b> <b>W26A</b>	APP CRS <b>260°</b>	Rwy Idg <b>7000</b> TDZE <b>113</b> Apt Elev <b>121</b>
--	------------------------	---

# RNAV (GPS) RWY 26

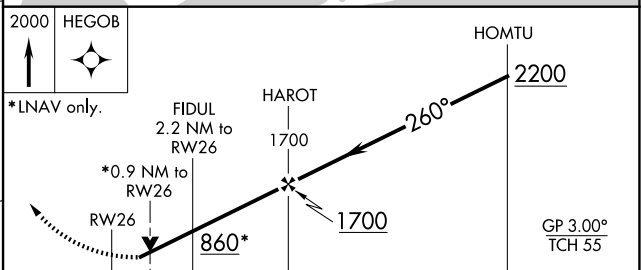
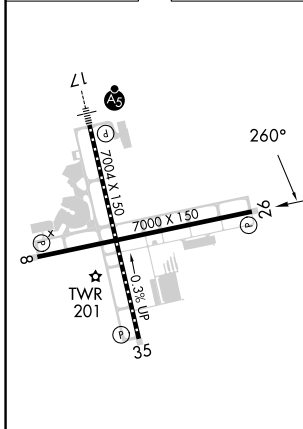
PENSACOLA INTL (PNS)

RNP APCH.	<p>▼ For uncompensated Baro-VNAV systems, LNAV/VNAV NA below 1°C or above 54°C. CAUTION: Intensive VFR student training in vicinity of airport. Rwy 26 helicopter visibility reduction below ¾ SM NA.</p>	MISSED APPROACH: Climb to 2000 direct HEGOB and hold
-----------	---	--

ATIS <b>121.25</b>	PENSACOLA APP CON <b>119.0 269.375</b>	PENSACOLA TOWER ★ <b>119.9 (CTAF) 0 257.8</b>	GND CON <b>121.9 348.6</b>	CLNC DEL <b>123.725 256.875</b>	UNICOM <b>122.95</b>
-----------------------	---	--	-------------------------------	------------------------------------	-------------------------



ELEV 121	TDZE 113
----------	----------



CATEGORY	A	B	C	D
LPV DA		363-¾	250 (300-¾)	
LNAV/VNAV DA		363-¾	250 (300-¾)	
LNAV MDA		460-1	347 (400-1)	
CIRCLING	580-1 459 (500-1)	680-1 559 (600-1)	860-2 739 (800-2)	860-2¼ 739 (800-2¼)

REIL Rwy 8, 26 and 35  
TDZ/CL Rwy 17  
HIRL Rwy 8-26 and 17-35

SE-3, 20 FEB 2025 to 20 MAR 2025

SE-3, 20 FEB 2025 to 20 MAR 2025