

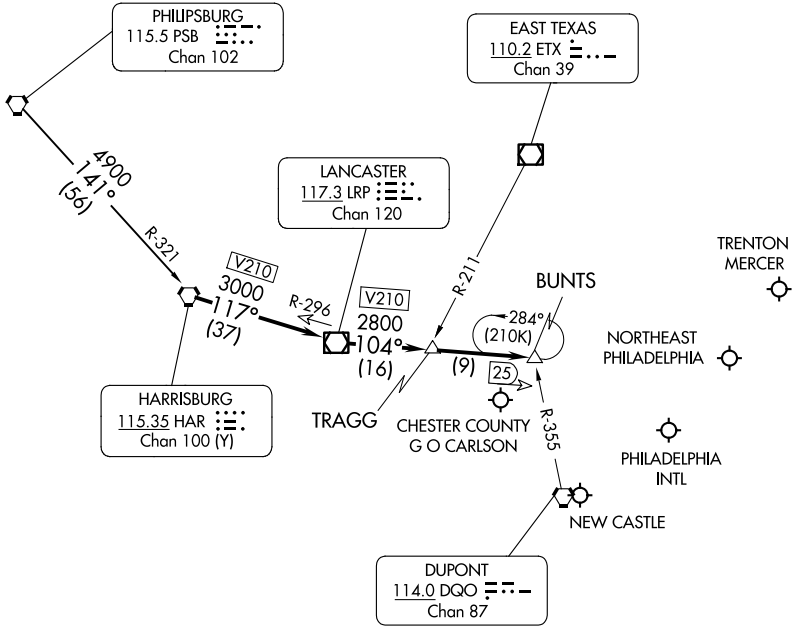
(HAR.BUNTS3) 24305

AL-320 (FAA)

# BUNTS THREE ARRIVAL

PHILADELPHIA, PENNSYLVANIA

PHILADELPHIA APP CON  
128.4 272.575  
ILG ATIS 123.95  
PHL ARR D-ATIS 133.4  
PNE ATIS 121.15  
TTN ATIS 126.775



NOTE: Expect to cross BUNTS at 8000.  
NOTE: This STAR is for aircraft capable of 250K or greater.

NOTE: Chart not to scale.

## ARRIVAL ROUTE DESCRIPTION

### PHILIPSBURG TRANSITION (PSB.BUNTS3):

From over HAR VORTAC on HAR R-117 (V210) and LRP R-296 to LRP VOR/DME, thence on LRP R-104 (V210) to BUNTS. Expect RADAR vectors to final approach course.

# BUNTS THREE ARRIVAL

(HAR.BUNTS3) 05OCT23

PHILADELPHIA, PENNSYLVANIA

NE-4, 20 FEB 2025 to 20 MAR 2025

NE-4, 20 FEB 2025 to 20 MAR 2025