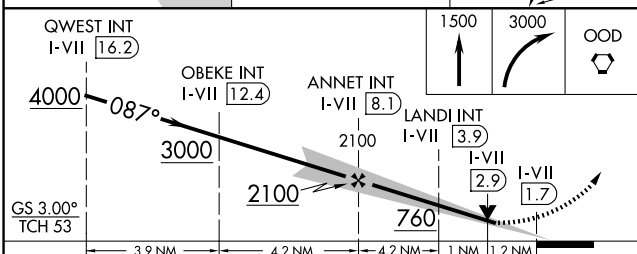
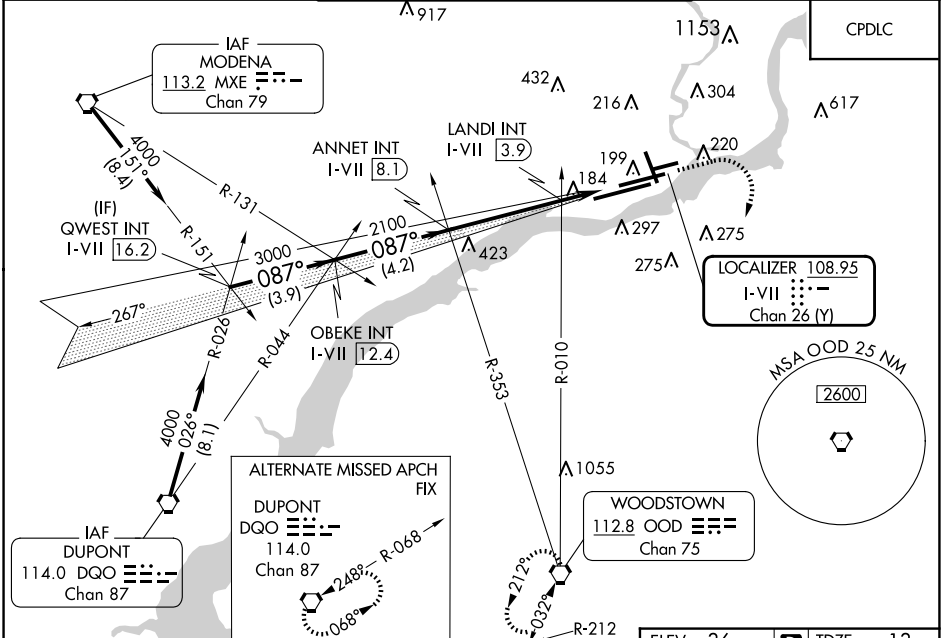


LOC/DME I-VII 108.95 Chan 26 (Y)	APP CRS 087°	Rwy Idg TDZE Apt Elev 9500 13 36
---	------------------------	--

ILS or LOC RWY 9L

PHILADELPHIA INTL (PHL)

<p>▼ For inop ALS, increase S-LOC 9L Cat C/D visibility to 2 SM. ▲ * RVR 1800 authorized with use of FD or AP or HUD to DA.</p>	<p>MALSR</p>	<p>MISSED APPROACH: Climb to 1500 then climbing right turn to 3000 direct OOD VORTAC and hold.</p>		
<p>D-ATIS ARR 133.4 DEP 135.925</p>	<p>PHILADELPHIA APP CON 124.35 319.15</p>	<p>PHILADELPHIA TOWER 118.5 327.05 (Rwys 9L/27R, 8/26 and 17/35) 135.1 327.05 (Rwy 9R/27L)</p>	<p>GND CON 121.9 348.6</p>	<p>CLNC DEL 118.85 348.6</p>



CATEGORY	A	B	C	D
S-ILS 9L*	213/24 200 (200-½)			
S-LOC 9L	760/24 747 (800-½)	760/40 747 (800-¾)	760-1¾ 747 (800-1¾)	747 (800-1¾)
CIRCLING	760-1 724 (800-1)	760-1¼ 724 (800-1¼)	760-2 724 (800-2)	760-2¼ 724 (800-2¼)
LANDI FIX MINIMUMS (DUAL VOR RECEIVERS OR DME REQUIRED)				
S-LOC 9L	440/24 504 (600-1)	427 (500-½) 564 (600-1)	440/40 584 (600-1½)	427 (500-¾) 684 (700-2¼)
CIRCLING	540-1 504 (600-1)	600-1 564 (600-1)	620-1½ 584 (600-1½)	720-2¼ 684 (700-2¼)

ELEV 36	TDZE 13
<p>TDZ/CL Rwy 9R HIRL all Rwys REIL Rwys 9L and 35</p>	
<p>FAF to MAP 6.4 NM</p>	
Knots	60 90 120 150 180
Min:Sec	6:24 4:16 3:12 2:34 2:08

NE-4, 20 FEB 2025 to 20 MAR 2025

NE-4, 20 FEB 2025 to 20 MAR 2025