

WAAS CH 90122 W27B	APP CRS 268°	Rwy Idg TDZE 11 Apt Elev 36	8864
--	------------------------	---	-------------

RNAV (GPS) RWY 27R

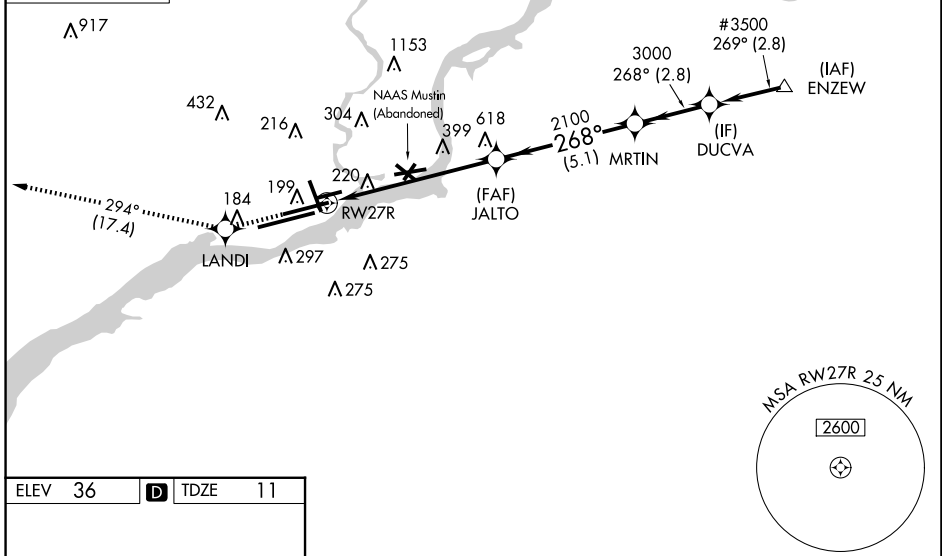
PHILADELPHIA INTL (PHL)

▽ For uncompensated Baro-VNAV systems, LNAV/VNAV NA below -12°C (11°F) or above 54°C (130°F). DME/DME RNP-0.3 NA. For inop ALS, increase LNAV/VNAV all Cats visibility to 1 3/8 SM and LNAV Cat C/D to 2 SM.	MALSR 	MISSED APPROACH: Climb to 3000 direct LANDI and on track 294° to MXE VORTAC and hold.		
D-ATIS ARR 133.4 DEP 135.925	PHILADELPHIA APP CON 124.35 319.15	PHILADELPHIA TOWER 118.5 327.05 (Rwys 9L/27R, 8/26 and 17/35) 135.1 327.05 (Rwy 9R/27L)	GND CON 121.9 348.6	CLNC DEL 118.85 348.6

MISSED APCH FIX
MODENA
MXE

CPDLC

#3000 when authorized by ATC.



ELEV 36	D	TDZE 11
---------	----------	---------

TDZ/CL Rwy 9R
HIRL all Rwys
REIL Rwys 9L and 35

3000	LANDI	tr 294°	MXE	VGSI and RNAV glidepath not coincident (VGSI Angle 3.00°/TCH 81).	# 3000 when authorized by ATC.
* LNAV only.				MRTIN	DUCVA
RW27R		JALTO	MRTIN	3000	3500#
2 NM		4.3 NM	5.1 NM	2.8 NM	
2 NM	4.3 NM	5.1 NM	2.8 NM		
GP 3.00°	TCH 53				
CATEGORY	A	B	C	D	
LPV DA	267/24 256 (300-1/2)				
LNAV/VNAV DA	520/60 509 (500-1 1/4)				
LNAV MDA	720/24	709 (700-1/2)	720-1 1/2 709 (700-1 1/2)	720-1 3/4 709 (700-1 3/4)	
CIRCLING	720-1	684 (700-1)	720-2 684 (700-2)	720-2 1/4 684 (700-2 1/4)	

NE-4, 20 FEB 2025 to 20 MAR 2025

NE-4, 20 FEB 2025 to 20 MAR 2025