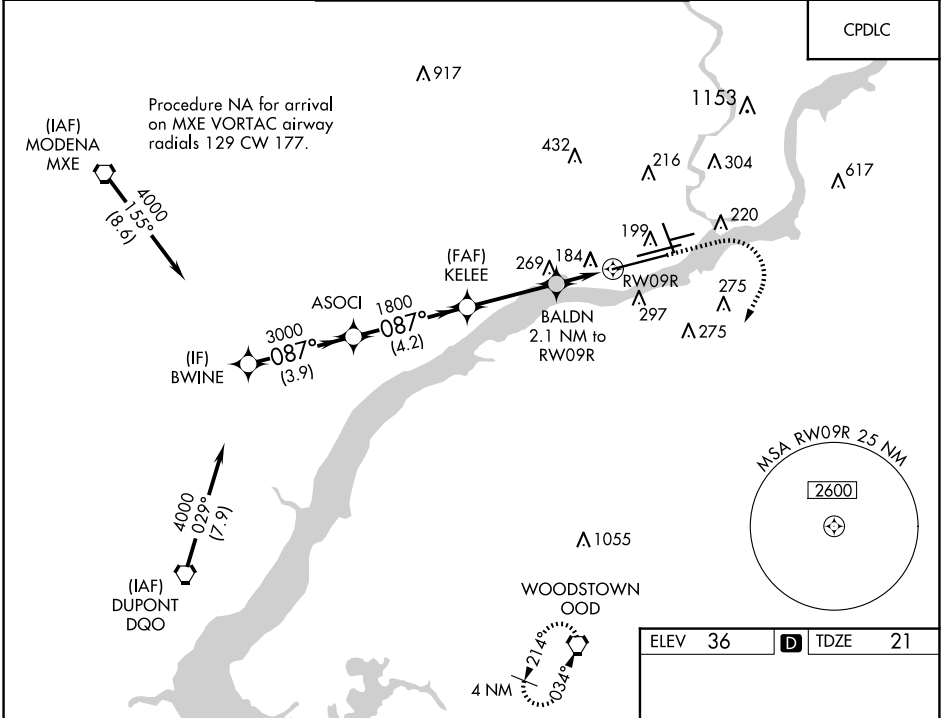


WAAS CH 40023 W09A	APP CRS 087°	Rwy Idg TDZE 21 Apt Elev 36	12000
--	------------------------	---	--------------

RNAV (GPS) Y RWY 9R

PHILADELPHIA INTL (PHL)

<p>▼ For uncompensated Baro-VNAV systems, LNAV/VNAV NA below -12°C (11°F) or above 54°C (130°F). DME/DME RNP-0.3 NA. ▲ For inop ALS, increase LNAV/VNAV visibility all Cats to RVR 5000 and LNAV Cats C/D visibility to RVR 6000.</p>	<p>ALSF-2</p>	<p>MISSED APPROACH: Climb to 1500 then climbing right turn to 3000 direct OOD VORTAC and hold.</p>		
			<p>D-ATIS ARR 133.4 DEP 135.925</p>	<p>PHILADELPHIA APP CON 124.35 319.15</p>



NE-4, 20 FEB 2025 to 20 MAR 2025

NE-4, 20 FEB 2025 to 20 MAR 2025

<p>VGSI and RNAV glidepath not coincident (VGSI Angle 3.00/TCH 72).</p>		<p>1500</p>	<p>3000</p>	<p>OOD</p>
<p>BWINE</p>		<p>ASOCI</p>	<p>KELEE</p>	<p>BALDN 2.1 NM to RWY09R</p>
<p>4000 — 087° — 3000</p>		<p>1800</p>	<p>*740</p>	<p>*1.1 NM to RWY09R</p>
<p>GP 3.00° TCH 58</p>		<p>3.9 NM</p>	<p>4.2 NM</p>	<p>3.3 NM</p>
<p>1.1 NM</p>		<p>*LNAV only.</p>		
<p>CATEGORY</p>	<p>A</p>	<p>B</p>	<p>C</p>	<p>D</p>
<p>LPV DA</p>	<p>221/18</p>		<p>200 (200-½)</p>	
<p>LNAV/VNAV DA</p>	<p>346/30</p>		<p>325 (400-¾)</p>	
<p>LNAV MDA</p>	<p>440/24</p>	<p>419 (500-½)</p>	<p>440/40</p>	<p>419 (500-¾)</p>
<p>CIRCLING</p>	<p>540-1 504 (600-1)</p>	<p>640-1 604 (700-1)</p>	<p>640-1¾ 604 (700-1¾)</p>	<p>720-2¼ 684 (700-2¼)</p>
<p>TDZ/CL Rwy 9R HIRL all Rwys REIL Rwys 9L and 35</p>				