

FYRBD ONE DEPARTURE (RNAV)

AL-322 (FAA)

PHOENIX SKY HARBOR INTL (PHX)
PHOENIX, ARIZONA

SW-4, 20 FEB 2025 to 20 MAR 2025

TOP ALTITUDE:
8000

DEPARTURE ROUTE DESCRIPTION

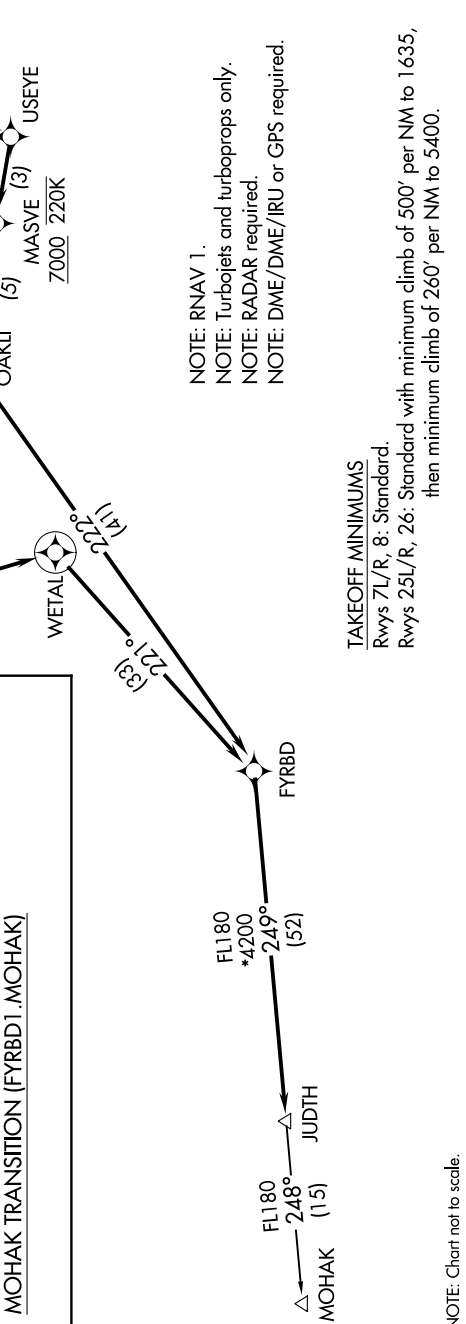
TAKEOFF RUNWAYS 7L/R, 8: Climb heading 078° to 1635, then direct FUTEP, then on track 132° to AZCRD, then on track 199° to USEYE, then on track 264° to cross MASVE at/above 7000 and at/below 220K, then on track 264° to OAKLI, then on track 222° to FYRBD, thence. . . .

TAKEOFF RUNWAYS 25L/R: Climb heading 258° to intercept course 240° to JUTAK, then on track 151° to WETAL, then on track 221° to FYRBD, thence. . . .

TAKEOFF RUNWAY 26: Climb heading 258° to 1635, then left turn direct JUTAK, then on track 151° to WETAL, then on track 221° to FYRBD, thence. . . .

. . . on track 249° to JUDTH, then on (transition). Maintain 8000, expect higher altitude 3 minutes after departure.

MOHAK TRANSITION (FYRBD1.MOHAK)



D-ATIS 127.575
CINC DEL 118.1 269.2
CPD/C 119.75 269.2 (NORTH)
GND CON 132.55 269.2 (SOUTH)
PHOENIX TOWER 118.7 278.8 (Rwy 8-26)
120.9 254.3 (Rwys 7L-25R, 7R-25L)
PHOENIX DEP CON 126.8 269.6

NOTE: RNAV 1.
NOTE: Turbojets and turboprops only.
NOTE: RADAR required.
NOTE: DME/DME/IRU or GPS required.

TAKEOFF MINIMUMS

Rwys 7L/R, 8: Standard.
Rwys 25L/R, 26: Standard with minimum climb of 500' per NM to 1635, then minimum climb of 260' per NM to 5400.

NOTE: Chart not to scale.

FYRBD ONE DEPARTURE (RNAV)

(FYRBD1.FYRBD) 24MAY18

PHOENIX, ARIZONA
PHOENIX SKY HARBOR INTL (PHX)

SW-4, 20 FEB 2025 to 20 MAR 2025