

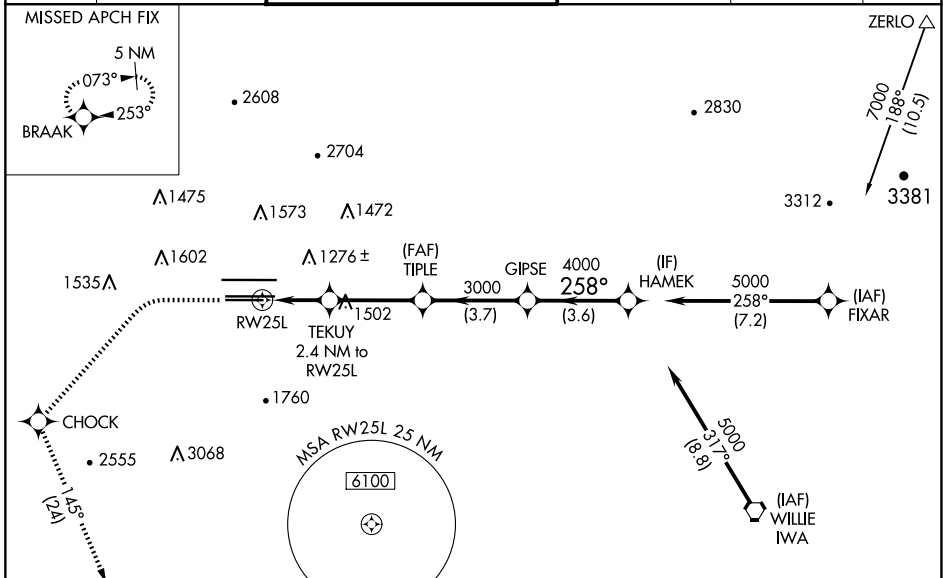
WAAS CH 82211 W25B	APP CRS 258°	Rwy Idg TDZE Apt Elev	7800 1126 1135
--	------------------------	-----------------------------	---

RNAV (GPS) Y RWY 25L

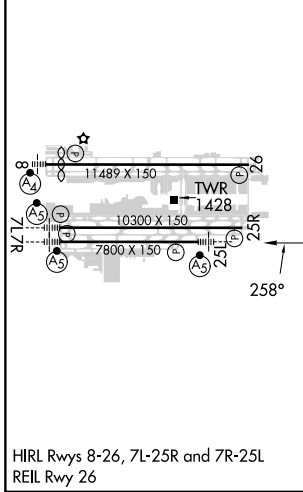
PHOENIX SKY HARBOR INTL (PHX)

RNP APCH-GPS.	MALSR 	MISSED APPROACH: Climb to 1900 then climbing left turn to 5000 direct CHOCK and on track 145° to BRAAK and hold.
---------------	-----------	--

D-ATIS 127.575	PHOENIX APP CON 128.65 353.9	PHOENIX TOWER 118.7 278.8 (Rwy 8-26) 120.9 254.3 (Rwy 7L-25R, 7R-25L)	GND CON 119.75 269.2 (N) 132.55 269.2 (S)	CLNC DEL 118.1 269.2	CPDLC
--------------------------	--	---	---	--------------------------------	-------



ELEV 1135	D	TDZE 1126
-----------	----------	-----------



1900	5000	CHOCK	BRAAK	VGSI and RNAV glidepath not coincident (VGSI Angle 3.00/TCH 66).
			tr 145°	
		TEKUY 2.4 NM to RW25L	TIPLE 3000	GIPSE 4000
		1.7 NM to RW25L	3000	HAMEK 5000
		1.7 NM	0.7 NM	3.3 NM
		3.7 NM	3.7 NM	3.6 NM
CATEGORY	A	B	C	D
LPV DA	1449-1/2 323 (400-1/2)			
LNAV/VNAV DA	1589-1 463 (500-1)			1674-1 1/8 548 (600-1 1/8)
LNAV MDA	1740-1/2 614 (700-1/2)		1740-1 3/8 614 (700-1 3/8)	
C CIRCLING	1740-1 605 (700-1)		2040-2 3/4 1205 (1300-3)	

SW-4, 20 FEB 2025 to 20 MAR 2025

SW-4, 20 FEB 2025 to 20 MAR 2025