

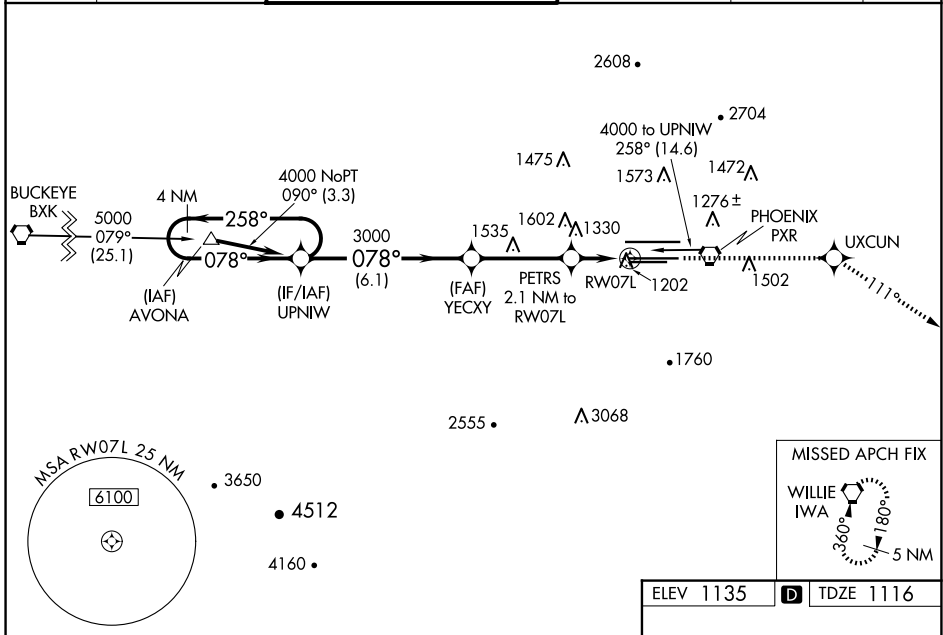
WAAS CH 65811 W07A	APP CRS 078°	Rwy Idg 10300 TDZE 1116 Apt Elev 1135
--	------------------------	--

RNAV (GPS) Y RWY 7L

PHOENIX SKY HARBOR INTL (PHX)

RNP APCH - GPS.		MALSR	MISSED APPROACH: Climb to 5000 direct UXCUN and via 111° track to IWA VORTAC and hold.
<p>▼ For inop ALS, increase visibility LPV all Cats to RVR 4500, LNAV/VNAV all Cats to RVR 6000, LNAV Cats C/D to 1½ SM. For uncompensated Baro-VNAV systems, LNAV/VNAV NA below -17°C or above 46°C. Simultaneous approach authorized. Use of FD or AP providing RNAV track guidance required during simultaneous operations. LNAV procedure NA during simultaneous operations.</p>			

D-ATIS 127.575	PHOENIX APP CON 128.65 353.9	PHOENIX TOWER 118.7 278.8 (Rwy 8-26) 120.9 254.3 (Rwy 7L-25R, 7R-25L)	GND CON 119.75 269.2 (N) 132.55 269.2 (S)	CLNC DEL 118.1 269.2	CPDLC
--------------------------	--	---	---	--------------------------------	-------



SW-4, 20 FEB 2025 to 20 MAR 2025

SW-4, 20 FEB 2025 to 20 MAR 2025

VGSIs and RNAV glidepath not coincident (VGSi Angle 3.00/TCH 73).		5000	UXCUN	tr 111°	IWA
<p>4 NM Holding Pattern</p> <p>GP 3.00° TCH 57</p>		4000	3000	1840	078°
CATEGORY	A	B	C	D	
LPV DA	1389/24		273 (300-½)		
LNAV/VNAV DA	1519/50		403 (400-1)		
LNAV MDA	1580/24	464 (500-½)	1580/40 464 (500-¾)	1580/50 464 (500-1)	
CIRCLING	1740-1	605 (700-1)	2040-2¾ 905 (1000-2¾)	2560-3 1425 (1500-3)	HIRL Rwy 8-26, 7L-25R and 7R-25L REIL Rwy 26