

# HI-ILS or LOC Y RWY 12

LOC I-MUO <b>110.3</b>	APCH CRS <b>122°</b>	Rwy Idg <b>13,510</b> TDZE <b>2987</b> Arprt Elev <b>2996</b>
---------------------------	-------------------------	---

[USAF]

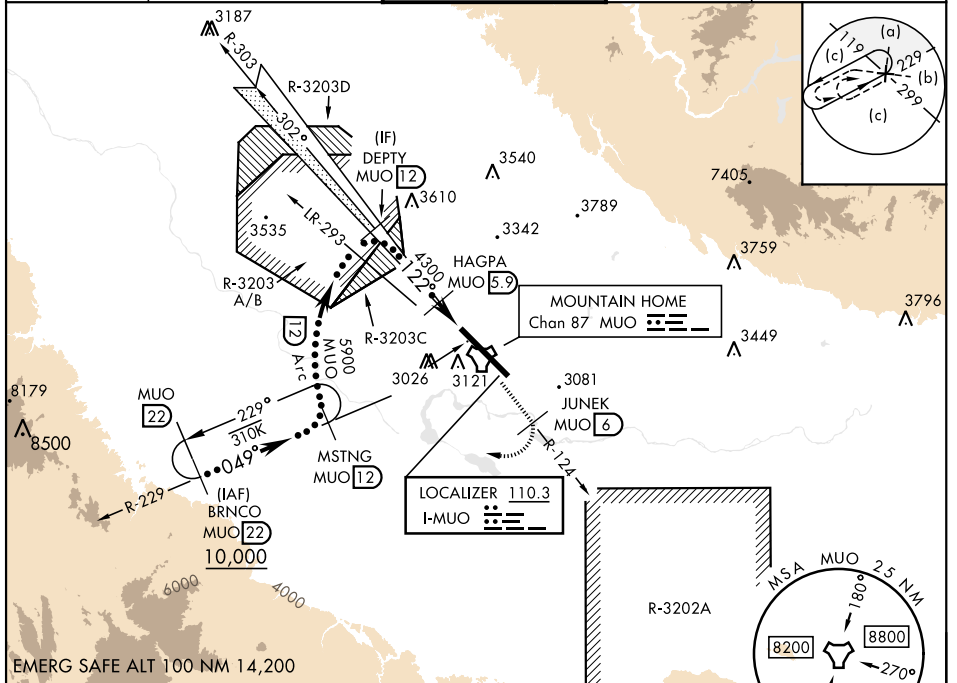
MOUNTAIN HOME AFB (KMUO)

RADAR or DME required.

<p>ALSF-1 (A1)</p>	<p>MISSED APPROACH: Climb to 10,000 via MUO R-124 to JUNEK/6 DME, turn right and intercept MUO R-229 to MSTNG/12 DME and hold. Continue climb in hold to 10,000.</p>
------------------------	--

\*When ALS inop, increase CAT CDE RVR to 40 and vis to ¼ mile.  
\*\*When ALS inop, increase CAT CDE vis to 1 ½ miles.  
\*\*\*Circling NA NE of Rwy 12-30.

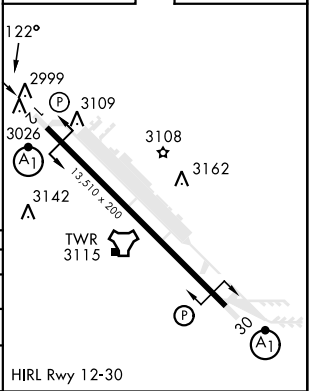
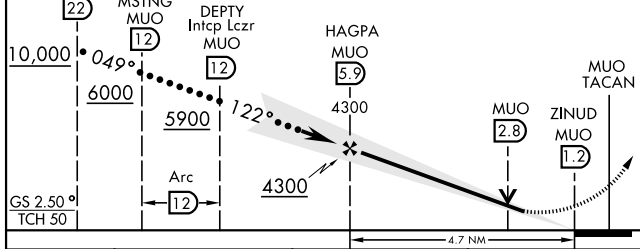
ATIS <b>273.5</b>	MOUNTAIN HOME APP CON <b>124.8 259.1</b>	MOUNTAIN HOME TOWER <b>133.85 253.5</b>	GND CON <b>120.5 275.8</b>	CLNC DEL <b>127.1 290.425</b>
----------------------	---	--	-------------------------------	----------------------------------



EMERG SAFE ALT 100 NM 14,200

LOCALIZER 110.3 I-MUO

ELEV	2996	TDZE	2987
------	------	------	------



CATEGORY	C	D	E
S-ILS 12 *	3190/24	203	(200-½)
S-LOC 12 **	3460/50	473	(500-1)
CIRCLING ***	3560-1 ½ 564 (600-1 ½)	3560-2 564 (600-2)	3700-2 ½ 704 (800-2 ½)

HIRL Rwy 12-30

# HI-ILS or LOC Y RWY 12

NW-1, 20 FEB 2025 to 20 MAR 2025

NW-1, 20 FEB 2025 to 20 MAR 2025