

ILS or LOC Z RWY 12

LOC I-MUO 110.3	APCH CRS 122°	Rwy Idg 13,510 TDZE 2987 Arprt Elev 2996
---------------------------	-------------------------	---

[USAF]

MOUNTAIN HOME AFB (KMUO)

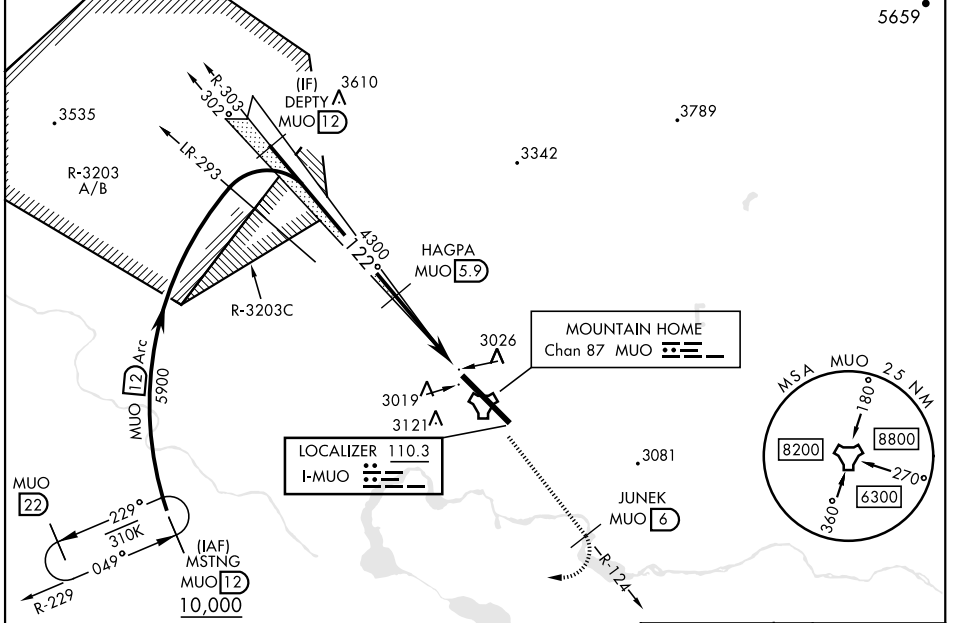
RADAR or DME required.

- ▼ * When ALS inop, increase RVR to 40, vis to ¾ mile.
- ** When ALS inop, increase CAT AB RVR to 55 and vis to 1 mile, CAT CDE vis to 1½ miles.
- *** Circling NA NE of Rwy 12-30.

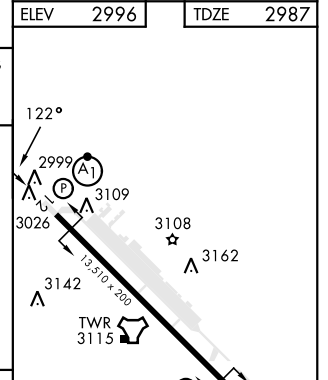
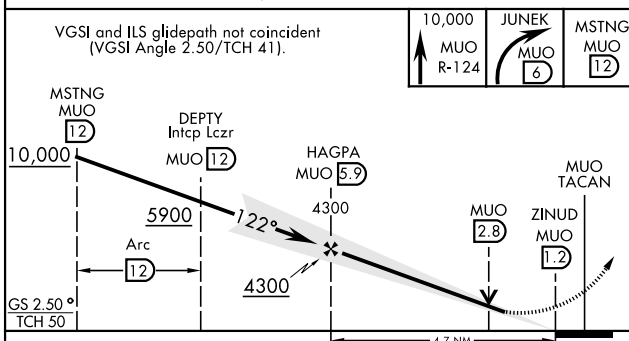


MISSED APPROACH: Climb to 10,000 via MUO R-124 to JUNEK/6 DME, turn right and intercept MUO R-229 to MSTNG/12 DME and hold. Continue climb in hold to 10,000.

ATIS 273.5	MOUNTAIN HOME APP CON 124.8 259.1	MOUNTAIN HOME TOWER 133.85 253.5	GND CON 120.5 275.8	CLNC DEL 127.1 290.425
----------------------	---	--	-------------------------------	----------------------------------



EMERG SAFE ALT 100 NM 14,200



VGSI and ILS glidepath not coincident (VGSI Angle 2.50/TCH 41).	10,000 MUO R-124	JUNEK MUO 6	MSTNG MUO 12		
MSTNG MUO 12	DEPTY Intcpr Lc2r MUO 12	HAGPA MUO 5.9	MUO TACAN		
5900 Arc	4300	MUO 2.8	ZINUD MUO 1.2		
GS 2.50° TCH 50	4300	4.7 NM			
CATEGORY	A	B	C	D	E
S-ILS 12 *	3190/24		203	(200-½)	
S-LOC 12 **	3460/24	473 (500-½)	3460/50	473	(500-1)
*** CIRCLING	3520-1 524 (600-1)	3560-1 564 (600-1)	3560-1½ 564 (600-1½)	3560-2 564 (600-2)	3700-2½ 704 (800-2½)

ELEV	2996	TDZE	2987
HIRL Rwy 12-30			

ILS or LOC Z RWY 12

NW-1, 20 FEB 2025 to 20 MAR 2025

NW-1, 20 FEB 2025 to 20 MAR 2025