

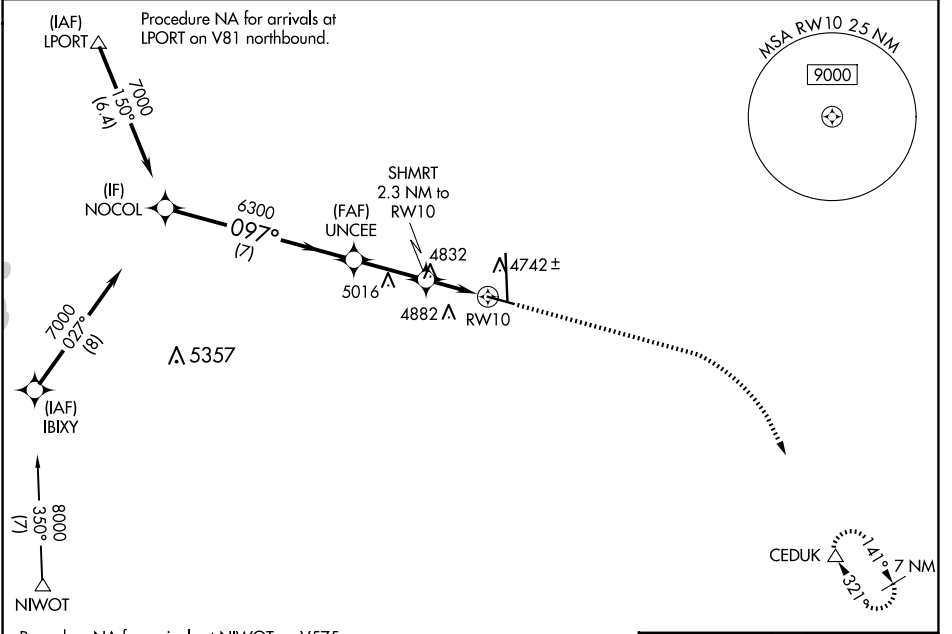
WAAS CH <b>62900</b> W10A	APP CRS <b>097°</b>	Rwy Idg TDZE Apt Elev	<b>5801</b> <b>4661</b> <b>4697</b>
---------------------------------	------------------------	-----------------------------	---

# RNAV (GPS) RWY 10

GREELEY-WELD COUNTY (GXY)

RNP APCH.  
For uncompensated Baro-VNAV systems, LNAV/VNAV NA below -24°C or above 54°C.  
MISSED APPROACH: Climb to 5400 then climbing right turn to 7000 direct CEDUK and hold.

AWOS-3PT <b>135.175</b>	DENVER APP CON <b>134.85 251.125</b>	CINC DEL <b>126.65</b>	UNICOM <b>122.7 (CTAF)</b> 0
----------------------------	---	---------------------------	---------------------------------



SW-1, 20 FEB 2025 to 20 MAR 2025

SW-1, 20 FEB 2025 to 20 MAR 2025

ELEV 4697	TDZE 4661
-----------	-----------

VGS and RNAV glidepath not coincident NOCOL (VGS Angle 3.00/TCH 43).	5400	7000	CEDUK	
	↑	↘	△	
	<b>*LNAV only</b>			
GP 3.00° TCH 50	7000			
	UNCEE	SHMRT 2.3 NM to RW10	CEDUK	
	6300	*1.4 NM to RW10	RW10	
	*5440			
	7 NM	2.7 NM	0.9 NM 1.4 NM	
CATEGORY	A	B	C	D
LPV DA	4911-3/4		250 (300-3/4)	
LNAV/VNAV DA	4920-3/4		259 (300-3/4)	
LNAV MDA	5140-1	479 (500-1)	5140-13/8	479 (500-13/8)
CIRCLING	5140-1 443 (500-1)	5200-1 503 (600-1)	5200-1 1/2 503 (600-1 1/2)	5380-2 1/4 683 (700-2 1/4)

REIL Rwy 10, 28, 17 and 35 0  
MIRL Rwy 10-28 and 17-35 0