

WAAS CH 72708 W17A	APP CRS 170°	Rwy Idg TDZE Apt Elev	10000 4697 4697
---------------------------------	------------------------	-----------------------------	--------------------------------------------

RNAV (GPS) RWY 17

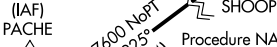
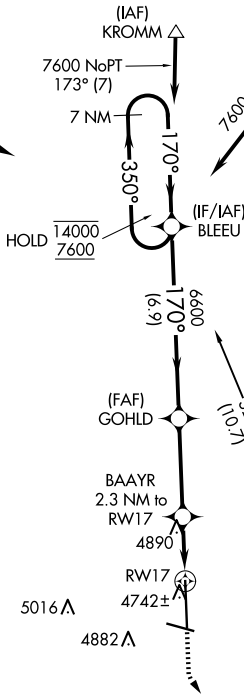
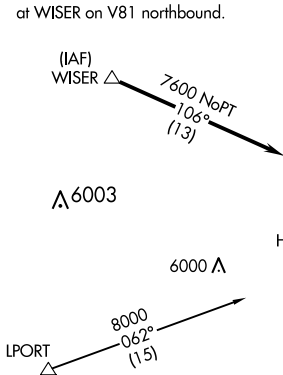
GREELEY-WELD COUNTY (GXY)

RNP APCH.
 For uncompensated Baro-VNAV systems, LNAV/VNAV NA below -24°C or above 54°C.

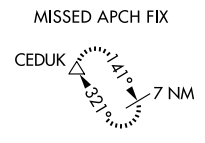
MISSED APPROACH: Climb to 5400 then climbing left turn to 7000 direct CEDUK and hold.

AWOS-3PT 135.175	DENVER APP CON 134.85 251.125	CLNC DEL 126.65	UNICOM 122.7 (CTAF)
----------------------------	-----------------------------------------	---------------------------	-------------------------------

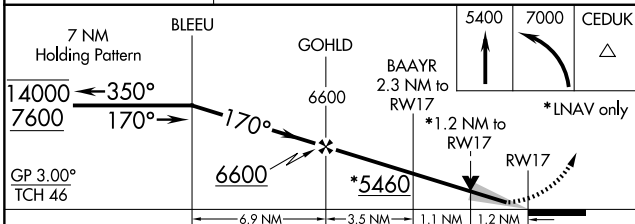
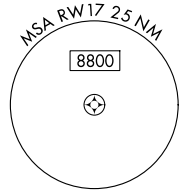
Procedure NA for arrivals at WISER on V81 northbound.



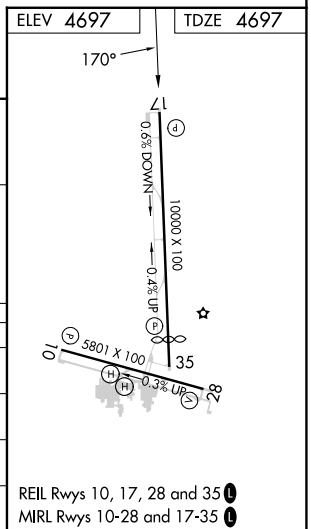
Procedure NA for arrivals at SHOOOP on V132 northwest bound.



Procedure NA for arrivals at GLL VOR/DME on V101 eastbound.



CATEGORY	A	B	C	D
LPV DA		4897-3/4	200 (200-3/4)	
LNAV/VNAV DA		4969-7/8	272 (300-7/8)	
LNAV MDA	5140-1	443 (500-1)	5140-1 1/2 443 (500-1 1/2)	5140-2 1/4 443 (500-2 1/4)
CIRCLING	5140-1 443 (500-1)	5200-1 503 (600-1)	5200-1 1/2 503 (600-1 1/2)	5380-2 1/4 683 (700-2 1/4)



REIL Rwy 10, 17, 28 and 35
 MRL Rwy 10-28 and 17-35

SW-1, 20 FEB 2025 to 20 MAR 2025

SW-1, 20 FEB 2025 to 20 MAR 2025