

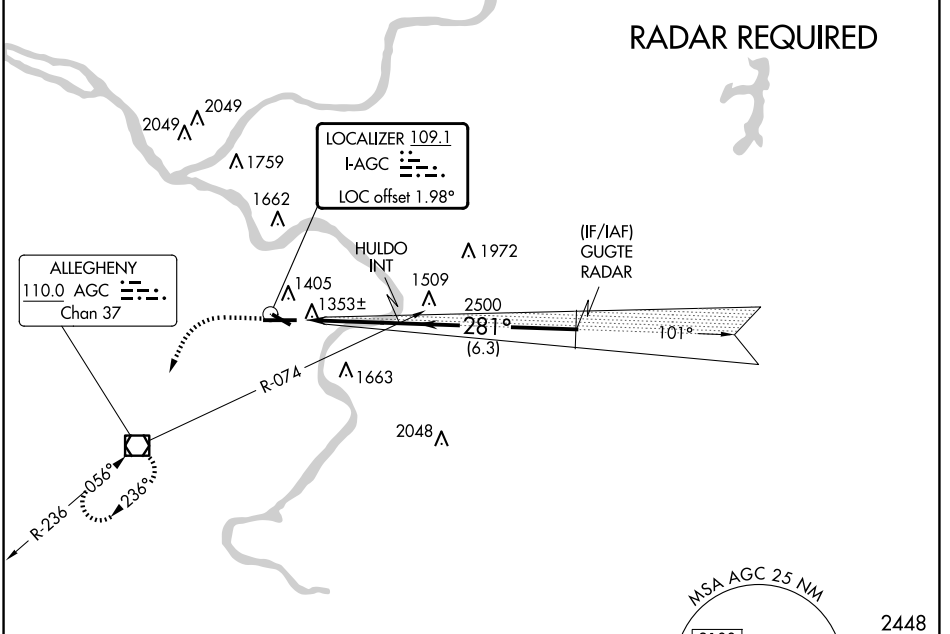
LOC I-AGC <b>109.1</b>	APP CRS <b>281°</b>	Rwy ldg TDZE Apt Elev	<b>6501</b> <b>1251</b> <b>1252</b>
---------------------------	------------------------	-----------------------------	---

# ILS or LOC RWY 28

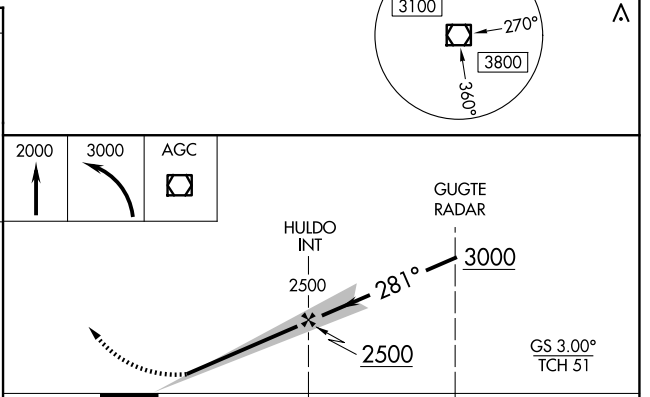
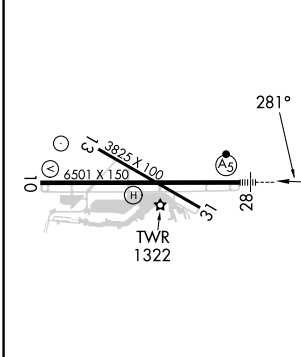
ALLEGHENY COUNTY (AGC)

For inoperative MALSR, increase S-LOC Cats C and D visibility to RVR 6000. Circling Rwy 13 NA at night.	MALSR	MISSED APPROACH: Climb to 2000 then climbing left turn to 3000 direct AGC VOR/DME and hold, continue climb-in-hold to 3000.	
		ATIS <b>120.55</b>	PITTSBURGH APP CON <b>119.35 285.575</b>

ATIS <b>120.55</b>	PITTSBURGH APP CON <b>119.35 285.575</b>	ALLEGHENY TOWER <b>121.1 239.0</b>	GND CON <b>121.7</b>
-----------------------	---	---------------------------------------	-------------------------



ELEV 1252	TDZE 1251
-----------	-----------



REIL Rwy 10, 13, and 31 HIRL Rwy 10-28 and 13-31	FAF to MAP 3.8 NM	<table border="1"> <tr> <th>CATEGORY</th> <th>A</th> <th>B</th> <th>C</th> <th>D</th> </tr> <tr> <td>S-ILS 28</td> <td colspan="4">1501/24 250 (300-1/2)</td> </tr> <tr> <td>S-LOC 28</td> <td>1660/24</td> <td>409 (500-1/2)</td> <td>1660/40</td> <td>409 (500-3/4)</td> </tr> </table>				CATEGORY	A	B	C	D	S-ILS 28	1501/24 250 (300-1/2)				S-LOC 28	1660/24	409 (500-1/2)	1660/40	409 (500-3/4)
CATEGORY	A	B	C	D																
S-ILS 28	1501/24 250 (300-1/2)																			
S-LOC 28	1660/24	409 (500-1/2)	1660/40	409 (500-3/4)																
<table border="1"> <tr> <td>Knots</td> <td>60</td> <td>90</td> <td>120</td> <td>150</td> <td>180</td> </tr> <tr> <td>Min:Sec</td> <td>3:48</td> <td>2:32</td> <td>1:54</td> <td>1:31</td> <td>1:16</td> </tr> </table>	Knots	60	90	120	150	180	Min:Sec	3:48	2:32	1:54	1:31	1:16	<input checked="" type="checkbox"/> CIRCLING	1720-1	468 (500-1)	728 (800-2)	1980-2 728 (800-2)	1980-2 1/4 728 (800-2 1/4)		
Knots	60	90	120	150	180															
Min:Sec	3:48	2:32	1:54	1:31	1:16															

NE-4, 20 FEB 2025 to 20 MAR 2025

NE-4, 20 FEB 2025 to 20 MAR 2025