

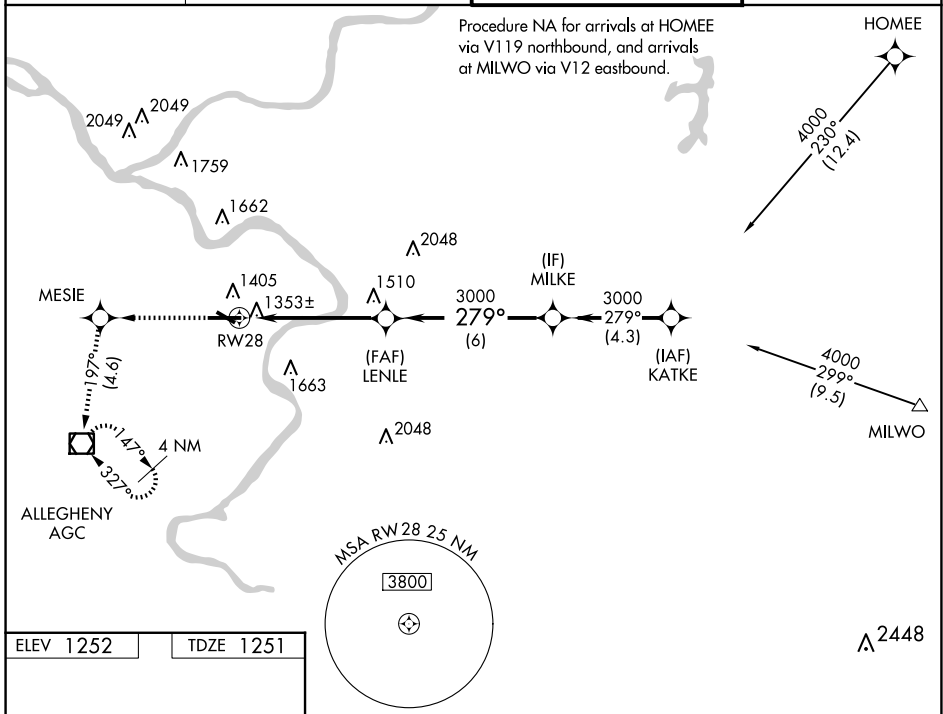
WAAS CH 65625 W28A	APP CRS 279°	Rwy Idg TDZE 1251 Apt Elev 1252	6501
--	------------------------	---	-------------

RNAV (GPS) RWY 28

ALLEGHENY COUNTY (AGC)

RNP APCH - GPS.	MALSR	MISSED APPROACH: Climb to 3000 direct MESIE and on course 197° to AGC VOR/DME and hold, continue climb-in-hold to 3000.
<p>⚠ For uncompensated Baro-VNAV systems, LNAV/VNAV NA below -16°C or above 54°C. Circling Rwy 13 NA at night. For inop ALS, increase LPV all Cats visibility to RVR 4500 and LNAV/VNAV all Cats visibility to RVR 5500.</p>		

ATIS 120.55	PITTSBURGH APP CON 119.35 285.575	ALLEGHENY TOWER 121.1 239.0	GND CON 121.7
-----------------------	---	---------------------------------------	-------------------------



NE-4, 20 FEB 2025 to 20 MAR 2025

NE-4, 20 FEB 2025 to 20 MAR 2025

ELEV 1252	TDZE 1251				
		Procedure Turn NA 3000 MESIE crs 197° AGC LENLE MILKE 1.2 NM to RW28 RW28 3000 -1.2 4 NM 6 NM	Procedure Turn NA 3000 GP 3.00° TCH 51		
CATEGORY	A	B	C	D	
LPV DA	1563/24		312 (400-½)		
LNAV/VNAV DA	1625/35		374 (400-⅝)		
LNAV MDA	1700/24 449 (500-½)		1700/45		449 (500-⅔)
<input checked="" type="checkbox"/> CIRCLING	1720-1¼ 468 (500-1¼)		1980-2 728 (800-2)		1980-2¼ 728 (800-2¼)