

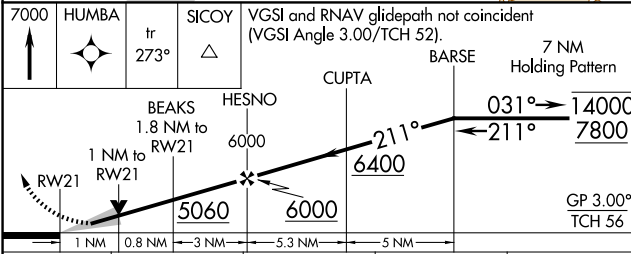
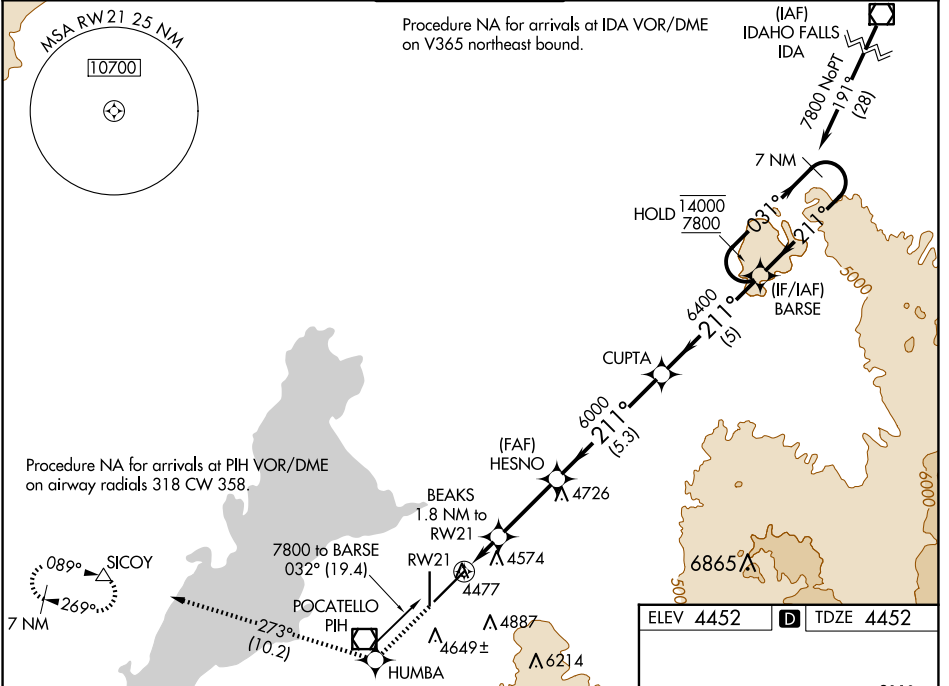
WAAS CH 78212 W21A	APP CRS 211°	Rwy Idg TDZE Apt Elev	9059 4452 4452
--	------------------------	-----------------------------	---

RNAV (GPS) RWY 21

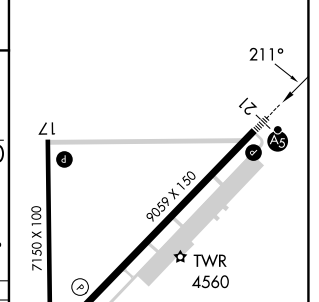
POCATELLO RGNL (PIH)

RNP APCH - GPS.	MALSR 	MISSED APPROACH: Climb to 7000 direct HUMBA and track 273° to SICOY and hold.
<p>⚠ Circling NA southeast of Rwy 3-21. For uncompensated Baro-VNAV systems, LNAV/VNAV NA below -22°C or above 54°C. For inop ALS, increase LNAV Cat C/D visibility to RVR 5500. *RVR 1800 authorized with use of FD or AP or HUD to DA.</p>		

ATIS 135.625	SALT LAKE CENTER 128.35 239.25	POCATELLO TOWER* 119.1 (CTAF) 257.8	GND CON 121.9	UNICOM 122.95
------------------------	--	---	-------------------------	-------------------------



ELEV 4452	TDZE 4452
-----------	-----------



CATEGORY	A	B	C	D
LPV DA*	4652/24		200 (200-1/2)	
LNAV/VNAV DA	4835/35		383 (400-5/8)	
LNAV MDA	4820/24 368 (400-1/2)		4820/35 368 (400-5/8)	
CIRCLING	4860-1 408 (500-1)	4920-1 468 (500-1)	4920-1 1/2 468 (500-1 1/2)	5020-2 568 (600-2)

HIRL Rwy 3-21 **1**

MIRL Rwy 17-35 **1**

REIL Rws 3 and 17 **1**

NW-1, 20 FEB 2025 to 20 MAR 2025

NW-1, 20 FEB 2025 to 20 MAR 2025