

VOR/DME PIH <b>112.6</b> Chan 73	APP CRS <b>033°</b>	Rwy Idg TDZE Apt Elev	<b>9059</b> <b>4444</b> <b>4452</b>
--	------------------------	-----------------------------	---

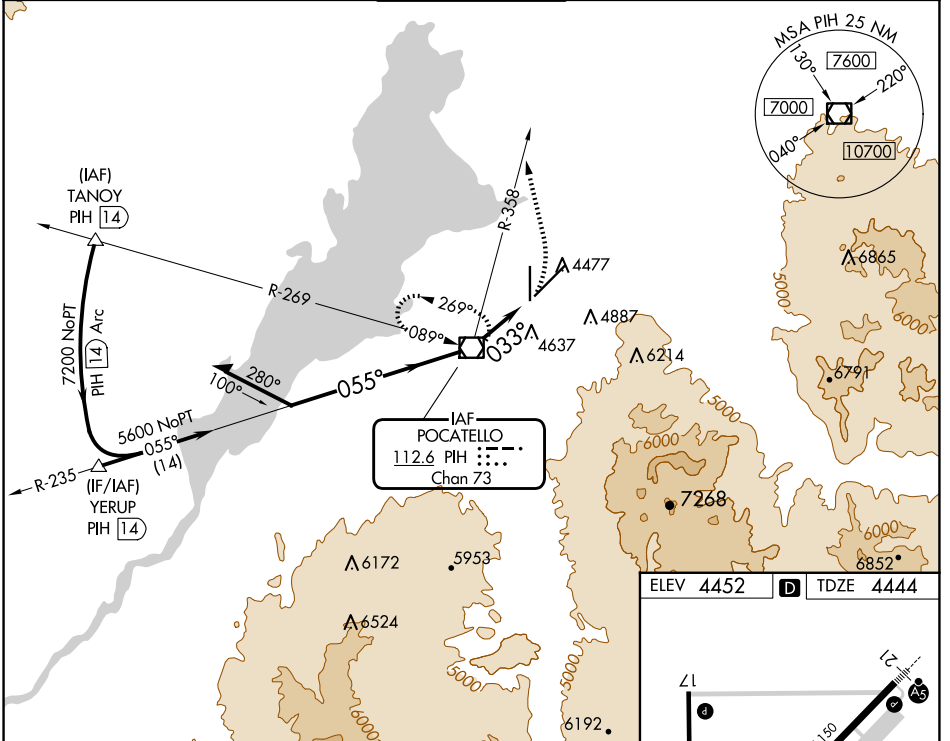
# VOR RWY 3

POCATELLO RGNL (PIH)

**⚠** Circling to Rwy 35 NA at night. When VGSI inop, Straight-In/Circling Rwy 3 procedure NA at night. Circling NA southeast of Rwy 3-21. Visibility reduction by helicopters NA. When local altimeter setting not received, use Idaho Falls altimeter setting and increase all MDA 140 feet, and increase visibility S-3 Cat C ½ mile and Circling Cat C ¼ mile.

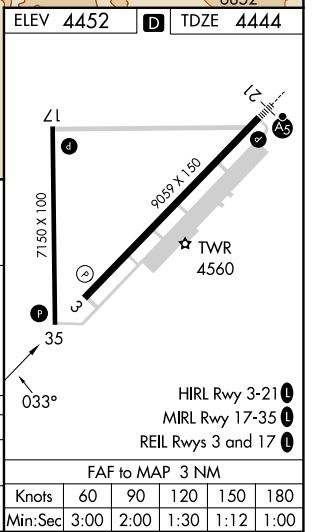
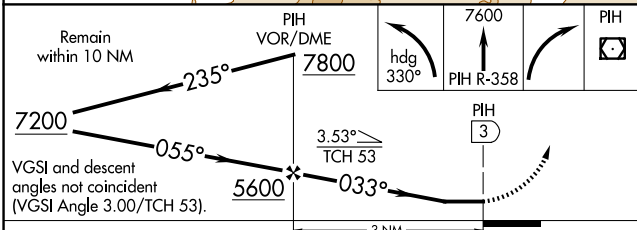
**MISSED APPROACH:** Climbing left turn on heading 330° and PIH VOR/DME R-358 to 7600 then right turn direct PIH VOR/DME and hold.

ATIS <b>135.625</b>	SALT LAKE CENTER <b>128.35 239.25</b>	<b>POCATELLO TOWER*</b> <b>119.1</b> (CTAF) <b>0 257.8</b>	GND CON <b>121.9</b>	UNICOM <b>122.95</b>
------------------------	--	---	-------------------------	-------------------------



NW-1, 20 FEB 2025 to 20 MAR 2025

NW-1, 20 FEB 2025 to 20 MAR 2025



CATEGORY	A	B	C	D
S-3	4940-1	496 (500-1)	4940-1 3/8 496 (500-1 3/8)	NA
CIRCLING	5000-1 548 (600-1)	5020-1 568 (600-1)	5060-1 3/4 608 (700-1 3/4)	NA

FAF to MAP 3 NM					
Knots	60	90	120	150	180
Min:Sec	3:00	2:00	1:30	1:12	1:00