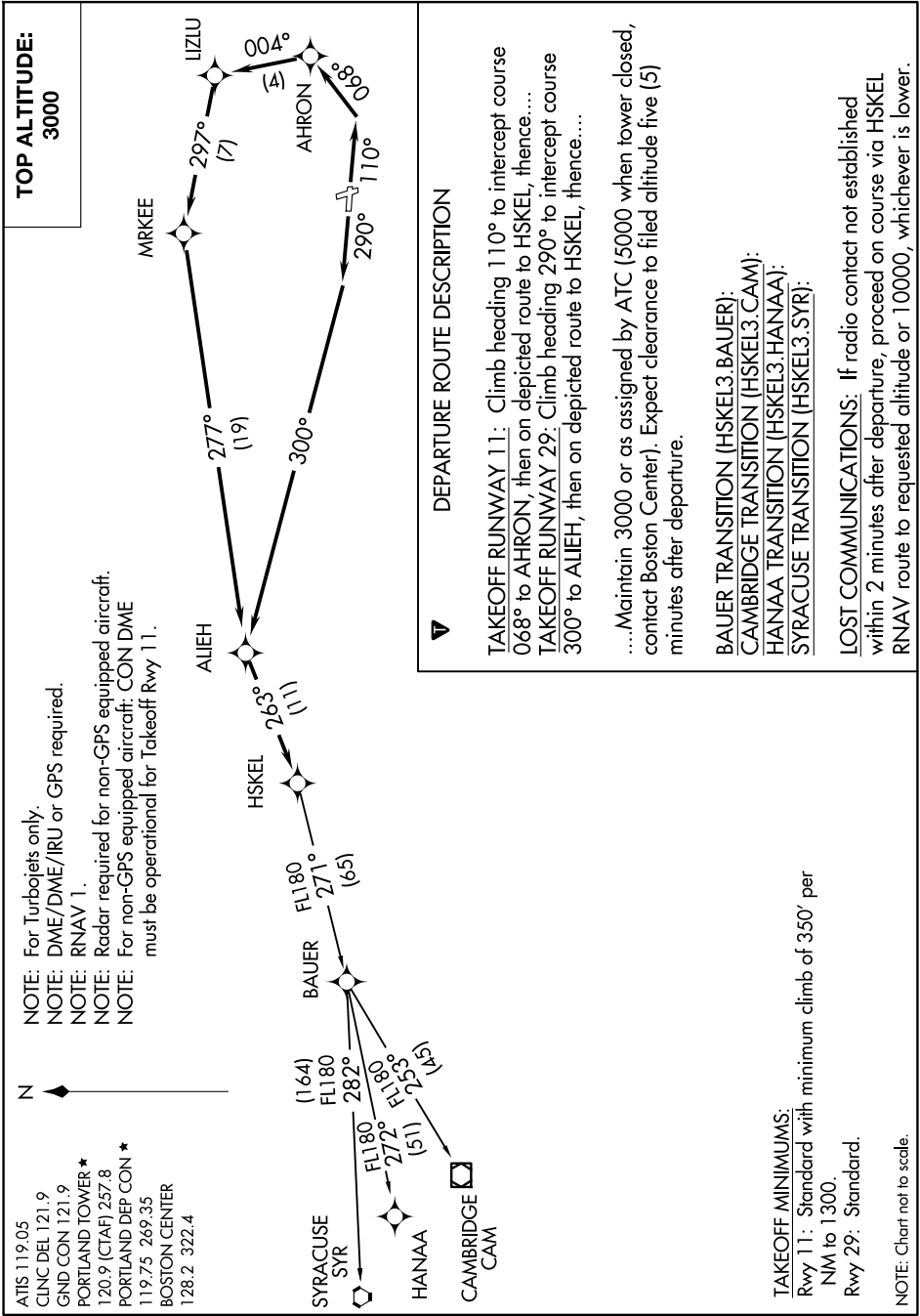


HSKEL THREE DEPARTURE (RNAV)

NE-1, 20 FEB 2025 to 20 MAR 2025



NOTE: For Turbojets only.
 NOTE: DME/DME/IRU or GPS required.
 NOTE: RNAV 1.
 NOTE: Radar required for non-GPS equipped aircraft.
 NOTE: For non-GPS equipped aircraft: CON DME must be operational for Takeoff Rwy 11.

ATIS 119.05
 CLNC DEL 121.9
 GND CON 121.9
 PORTLAND TOWER *
 120.9 (CTAF) 257.8
 PORTLAND DEP CON *
 119.75 269.35
 BOSTON CENTER
 128.2 322.4

TAKEOFF MINIMUMS:
 Rwy 11: Standard with minimum climb of 350' per NM to 1300.
 Rwy 29: Standard.

NOTE: Chart not to scale.

NE-1, 20 FEB 2025 to 20 MAR 2025