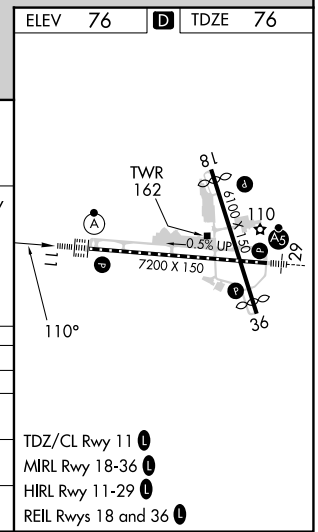
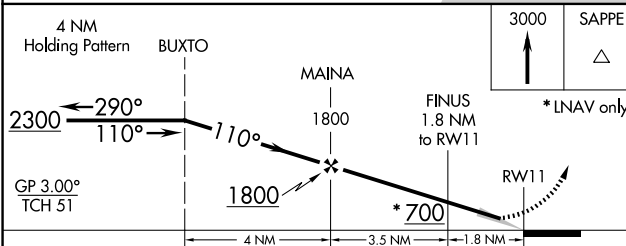
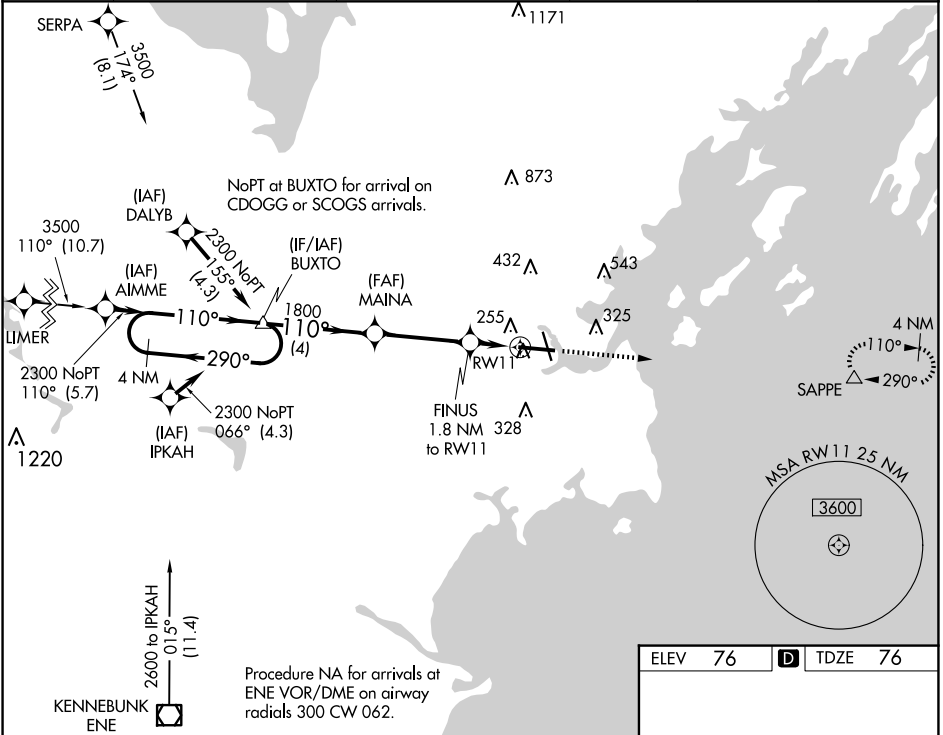


WAAS CH <b>70306</b> <b>W11A</b>	APP CRS <b>110°</b>	Rwy ldg TDZE Apt Elev	<b>7200</b> <b>76</b> <b>76</b>
--	------------------------	-----------------------------	---------------------------------------

# RNAV (GPS) RWY 11

PORTLAND INTL JETPORT (PWM)

RNP APCH - GPS.		ALSF-2		MISSED APPROACH: Climb to 3000 direct SAPPE and hold, continue climb-in-hold to 3000.	
<p>▼ For uncompensated Baro-VNAV systems, LNAV/VNAV NA below -18°C or above 54°C.</p>					
ATIS <b>119.05</b>	PORTLAND APP CON ★ <b>119.75 269.35</b>	PORTLAND TOWER ★ <b>120.9 0 (CTAF) 257.8</b>	GND CON <b>121.9</b>	CLNC DEL <b>121.9</b>	UNICOM <b>122.95</b>



CATEGORY	A	B	C	D
LPV DA	276/18 200 (200-½)			
LNAV/VNAV DA	456/40 380 (400-¾)			
LNAV MDA	520/24 444 (500-½)	520/45 444 (500-¾)		
<b>C</b> CIRCLING	620-1 544 (600-1)	640-1 564 (600-1)	740-1¾ 664 (700-1¾)	860-2½ 784 (800-2½)

NE-1, 20 FEB 2025 to 20 MAR 2025

NE-1, 20 FEB 2025 to 20 MAR 2025