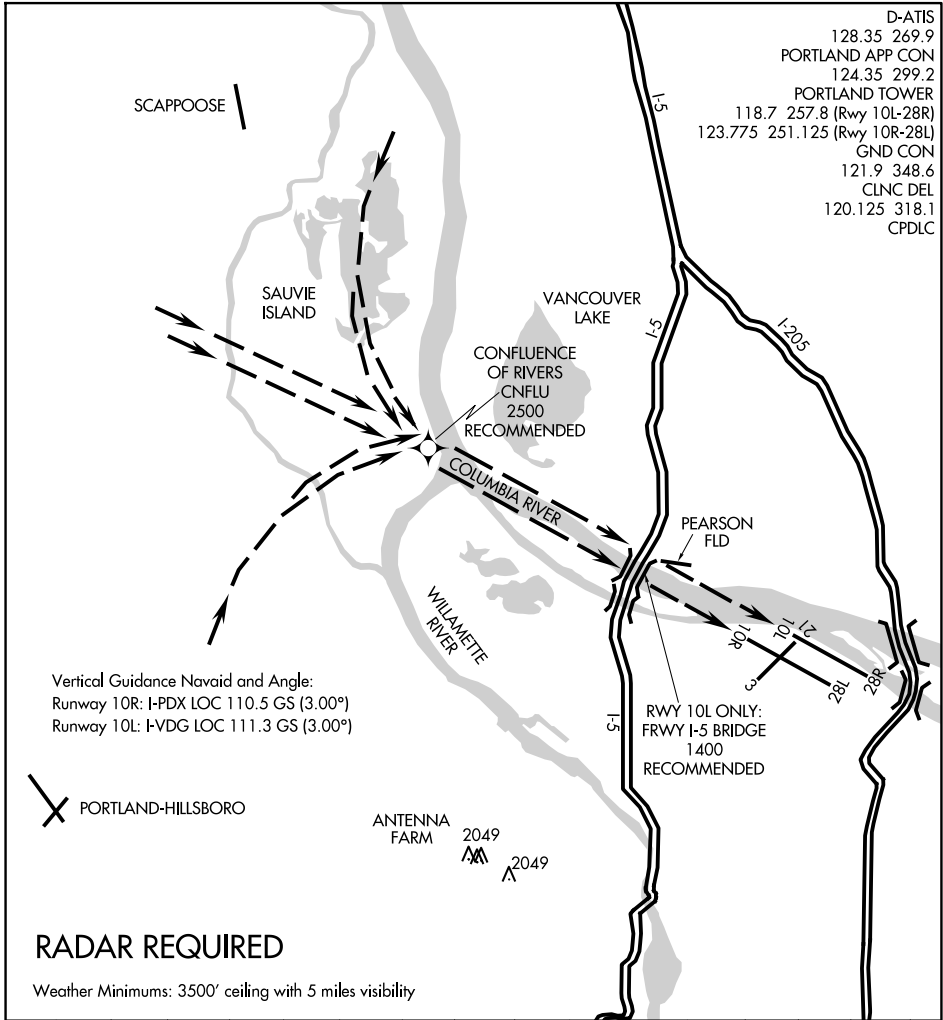


# COLUMBIA VISUAL RWY 10L/R

AL-330 (FAA)

PORTLAND INTL (PDX)  
PORTLAND, OREGON

- D-ATIS 128.35 269.9
- PORTLAND APP CON 124.35 299.2
- PORTLAND TOWER 118.7 257.8 (Rwy 10L-28R)
- 123.775 251.125 (Rwy 10R-28L)
- GND CON 121.9 348.6
- CLNC DEL 120.125 318.1
- CPDLC



NW-1, 20 FEB 2025 to 20 MAR 2025

NW-1, 20 FEB 2025 to 20 MAR 2025

## RADAR REQUIRED

Weather Minimums: 3500' ceiling with 5 miles visibility

1	2	3	4	5	6	7	8	9	10	11	12	13	14	15	16
---	---	---	---	---	---	---	---	---	----	----	----	----	----	----	----

COLUMBIA VISUAL RWY 10L/R  
PROCEDURE NOT AUTHORIZED AT NIGHT

# COLUMBIA VISUAL RWY 10L/R

Amdt 3 02MAY13

45°35'N-122°36'W

PORTLAND, OREGON  
PORTLAND INTL (PDX)